

The  
Power of  
Audio™



# Welcome to EPOS

EPOS delivers high-end audio solutions designed for enterprises and gaming.

Based on pioneering audio technology, we strive to unleash human potential by perfecting audio experiences and delivering innovative design and performance with all of our audio solutions.

Pioneering Audio Technology

Crafted to Last, Designed to Excite

Passion for Performance



# EPOS is a premium performance brand pioneering audio technology

Established in 2020

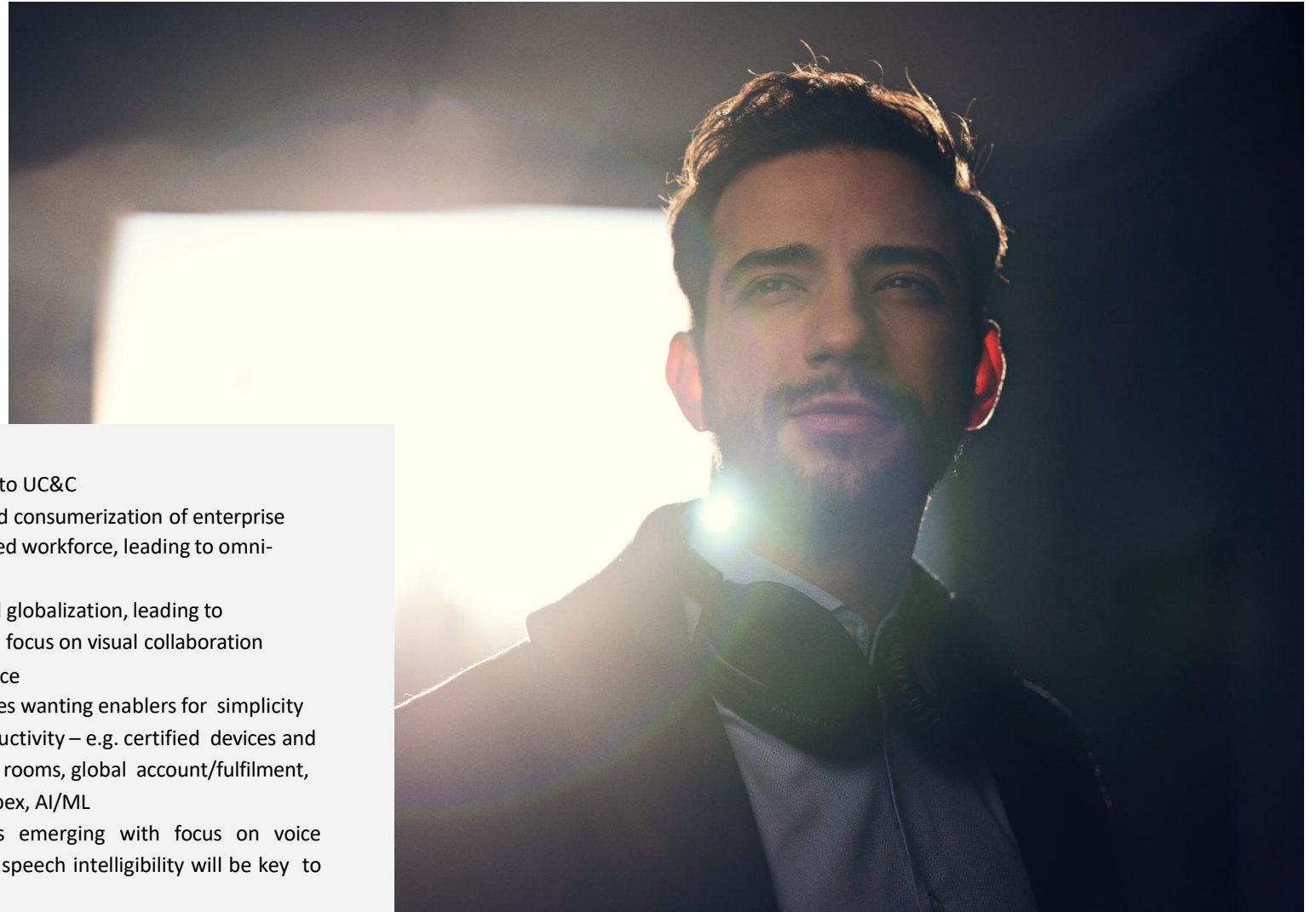
- 100% owned by Demant A/S
- Trade license agreement with Sennheiser

Main product areas

- Headsets and speakerphones for Enterprise Solutions: unified communications and collaboration (UCC) and contact centers
- Headsets for Gaming
- Headsets for Air Traffic Control



# Trends in Enterprise solutions market



- From UC to UC&C
- Continued consumerization of enterprise
- Distributed workforce, leading to omni-office
- Increased globalization, leading to increased focus on visual collaboration
- Open office
- Enterprises wanting enablers for simplicity and productivity – e.g. certified devices and blueprint rooms, global account/fulfilment, Capex/Opex, AI/ML
- Hearables emerging with focus on voice pick-up - speech intelligibility will be key to win.

Your challenge

# Your users' profile

Whether you work all day at your desk, roam your office corridors, are constantly on-the-go or spend most of your time in conferences – EPOS can provide you with the perfect solutions for your needs.

Desk-centric



Flexible office



Mobile



Conferencing



Your challenge

# Your meeting facilities

EPOS meeting room solutions cover every type of workspace and location – from large and mid- sized meeting rooms, to smaller huddle spaces, to on-the-go situations. No matter where you need to take your conference call, EPOS solutions provide for effortless collaborations – anywhere.



Own desk

1



Personal rooms

1



Huddle / Small meeting rooms

2-6



Medium meeting rooms

6-12



Large meeting rooms

12+



Your challenge

# Your noise environment

EPOS headsets are equipped with different types of noise-cancelling microphones. Choose the right solution for your needs according to your noise environment.

Low noise level



Medium noise level



High noise level



Your challenge

# Your devices

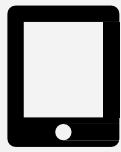
EPOS solutions work seamlessly with a variety of devices – desk phones, softphones, mobile phones and tablets. Make sure to choose the right solution for your device of choice.



Computer



Tablet



Mobile



Desk-phone





Your challenge

# Your | communication platform

At EPOS, we closely work with several Unified Communications partners. Choose a product that ensures a smooth and productive user experience with your communication platform of choice.



# Segmentation model/ User driven product portfolio

Three key use cases driven by different needs



# Product lines



## IMPACT

When talk matters

Ensure excellent customer experiences with a line of premium audio tools for optimal comfort, easy call handling and rich, natural sound.



## ADAPT

Work your way

Wherever you are, ensure flawless business calls and boost your concentration with versatile audio solutions that adapt to the way you work.



## EXPAND

Seamless collaboration

Expand your ability to collaborate across workspaces, locations and time zones, with plug-and-play conference solutions for unrivalled audio clarity.



## COMMAND

Always in control

For ATC and C3 professionals who demand uncompromising, reliable communication that keeps them in control.

IMPACT Line

# When talk matters



IMPACT 5000 Series Dect  
headsets



IMPACT DW Series Dect  
headsets



IMPACT D 10 Series Dect  
headsets



IMPACT MB Pro Series  
Bluetooth® headsets



IMPACT 600 Series Wired  
headsets



IMPACT 200 Series Wired  
headsets

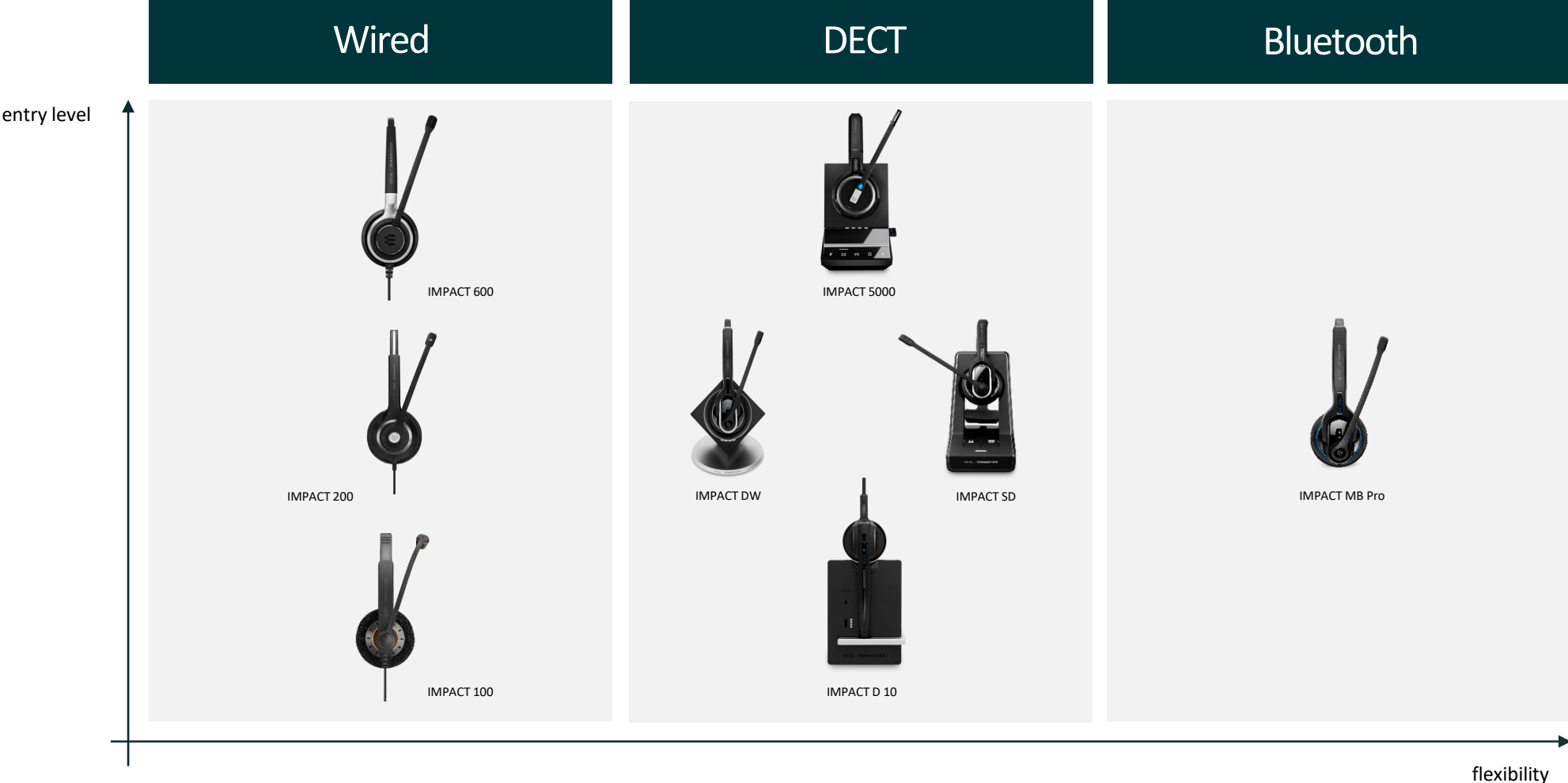


IMPACT 100 Series  
Wired headsets

Ensure excellent customer experiences with a line of premium audio tools for optimal comfort, easy call handling and rich, natural sound. Reliable, intelligent technologies filter out unwanted noise, enhance audio and boost your efficiency.

IMPACT Line

# Portfolio fit



flexibility

# Trends

- Contact center professionals often work in open office environments with limited space per agent and a high noise level
- Noise at work is affecting the ability to hear what is being said – while the amount, complexity and length of calls are increasing
- Simple hot desking & clean desk environment is needed so workers can work effectively anywhere as space per agent is decreasing
- Flexibility requires broad compatibility
- Continued transition in contact center technology for seamless, omnichannel experience



Talk with impact

# IMPACT 5000

Experience the impact of a wireless DECT communication hub that delivers rich, natural sound and total flexibility to busy, modern workplaces. Empower your workforce with headsets that boost productivity by creating focus.

- Experience superior EPOS sound  
Super wideband audio, exceptional stereo performance and unique noise-cancelling system for clear speech in noisy offices
- Empower your people with total flexibility  
One flexible headset that pairs easily to all devices with extensive wireless range up to 180 m/590 ft
- Increase productivity and create focus  
With clear busy light, noise dampening ear pads, and easy call management
- Ensure enhanced security for all your calls  
With Protected Pairing, 128-bit authentication, DECT Security certification and EPOS Manager
- Get all-day wearing comfort  
With soft leatherette ear pads and a choice of wearing styles for consistent comfort and well-being to increase efficiency



MSRP: from €329/\$339



# Comparison overview

## IMPACT 5000 Series



Art. no.	IMPACT SDW 5066	IMPACT SDW 5065	IMPACT SDW 5064	IMPACT SDW 5063	IMPACT SDW 5061	IMPACT SDW 5036	IMPACT SDW 5035	IMPACT SDW 5034	IMPACT SDW 5033	IMPACT SDW 5031	IMPACT SDW 5016	IMPACT SDW 5015	IMPACT SDW 5014	IMPACT SDW 5013	IMPACT SDW 5011	IMPACT SDW D1 USB
<b>EU</b>	1000627	1000603	1000615	1000591	1000302	1000623	1000599	1000611	1000587	1000301	1000619	1000595	1000607	1000583	1000300	1000299
<b>UK</b>	1000628	1000604	1000616	1000592	1000302	1000624	1000600	1000612	1000588	1000301	1000620	1000596	1000608	1000584	1000300	1000299
<b>US</b>	1000629	1000605	1000617	1000593	N/A	1000625	1000601	1000613	1000589	N/A	1000621	1000597	1000609	1000585	N/A	N/A
<b>AUS</b>	1000630	1000606	1000618	1000594	1000302	1000626	1000602	1000614	1000590	1000301	1000622	1000598	1000610	1000586	1000300	1000299
<b>JP</b>	N/A	1000649	N/A	N/A	N/A	N/A	1000648	N/A	N/A	N/A	N/A	1000647	N/A	N/A	N/A	N/A
<b>Wearing style</b>																
Single-sided headset						•	•	•	•	•						
Double-sided headset	•	•	•	•	•						•	•	•	•	•	•
Headband	•	•	•	•	•	•	•	•	•	•						
Neckband											•	•	•	•	•	•
Leatherette ear hook											•	•	•	•	•	•
Leatherette ear pad/s	•	•	•	•		•	•	•	•		•	•	•	•	•	•
<b>Connectivity</b>																
Desk phone	•	•				•	•				•	•				
Softphone/PC	•	•	•	•	•	•		•	•	•	•	•	•	•	•	•
Mobile phone	•	[•]	•	[•]		•	•	•	[•]		•	[•]	•	[•]		
Tablet	•	[•]	•	[•]		•		•	[•]		•	[•]	•	[•]		
Multi device connectivity*	•	[•]	•	[•]		•		•	[•]		•	[•]	•	[•]		
USB or Bluetooth® headset/speakerphone	•	•	•	•		•	•	•	•		•	•	•	•	•	•
USB-A					•					•						•
<b>Microphone</b>																
Two microphone noise-cancelling system	•	•	•	•	•	•	•	•	•	•	•	•	•	•	•	•
<b>Features &amp; technologies</b>																
Super wideband sound	•	•	•	•		•	•	•	•		•	•	•	•	•	•
High density wideband mode	•	•	•	•		•	•	•	•		•	•	•	•	•	•
Headset busy light	•	•	•	•	•	•	•	•	•	•	•	•	•	•	•	•
Busy light for the desk	[[•]]	[[•]]	[[•]]	[[•]]		[[•]]	[[•]]	[[•]]	[[•]]		[[•]]	[[•]]	[[•]]	[[•]]		
EPOS ActiveGard® technology	•	•	•	•	•	•	•	•	•	•	•	•	•	•	•	•
Noise at Work, (EU directive)**	•	•	•	•	•	•	•	•	•	•	•	•	•	•	•	•
DECT security	•	•	•	•	•	•	•	•	•	•	•	•	•	•	•	•
Protected pairing	•	•	•	•	•	•	•	•	•	•	•	•	•	•	•	•
<b>Unified communications</b>																
Optimized for UC	•	•	•	•	•	•	•	•	•	•	•	•	•	•	•	•

[•] Mobile connectivity available via optional BT-D 800 dongle accessory

[[•]] Option available with additional accessory

\* Connects up to two mobile devices at the same time

\*\* In compliance with EU Noise at Work legislation, EU Noise at Work Directive (Directive 2003/10/EC)



Freedom and flexibility

# IMPACT DW

When work means talk choose a wireless DECT solution that drives excellent customer experiences. Optimize your calls with premium audio from EPOS' unique technologies and enjoy design that provides all-day user comfort.

- Ensure premium audio for excellent call quality  
Maximize speech intelligibility with EPOS Voice Clarity and ultra noise-cancelling microphone
- Talk all day in comfort  
With up to 12 hours talk time and lightweight headset with extra soft ear pads
- Enjoy wireless freedom and dual-connectivity  
With wireless reach of up to 180 m/590 ft and the flexibility of dual-connectivity to both desk phone and PC/softphone
- Choose your wearing style  
With comfortable, smart headsets designed to suit every personal preference; headband, ear hook or optional neckband
- Easy magnetic docking and charging  
Dock the headset to the magnetic charge interface and be sure it's charged and ready to go for your next call



MSRP: from €279/\$299





## Comparison overview IMPACT DW Series



Art. no.	IMPACT DW Office ML	IMPACT DW Office USB ML	IMPACT DW Office PHONE	IMPACT DW Pro 2 ML	IMPACT DW Pro 2 USB ML	IMPACT DW Pro 2 PHONE	IMPACT DW Pro 1 ML	IMPACT DW Pro 1 USB ML	IMPACT DW Pro 1 PHONE
EU	1000529	1000541	1000520	1000537	1000547	1000526	1000533	1000544	1000523
UK	1000531	1000542	1000521	1000539	1000548	1000527	1000534	1000545	1000524
US	1000530	N/A	N/A	1000538	N/A	N/A	1000535	N/A	N/A
AUS	1000532	1000543	1000522	1000540	1000549	1000528	1000536	1000546	1000525
<b>Wearing style</b>									
Single-sided headset	.	.	.				.	.	.
Double-sided headset				.	.	.			
Leatherette ear hook	.	.	.						
Leatherette ear pad	.	.	.						
Extra soft leatherette ear pad/s				.	.	.	.	.	.
Headband	.	.	.	.	.	.	.	.	.
Neckband	[*]	[*]	[*]						
<b>Connectivity</b>									
Desk phone	.		.	.		.	.		.
Softphone/PC	.	.		.	.		.	.	
Dual device connectivity	.			.			.		
Single device connectivity		.	.		.	.		.	.
<b>Microphone</b>									
Noise-cancelling	.	.	.						
Ultra noise-cancelling				.	.	.	.	.	.
Bendable and long boom arm				.	.	.	.	.	.
<b>Features &amp; technologies</b>									
EPOS ActiveGard® technology	.	.	.	.	.	.	.	.	.
Noise at Work, EU limiter*	.	.	.	.	.	.	.	.	.
<b>Unified communications</b>									
Optimized for UC	.	.		.	.		.	.	

[\*] Neckband available as accessory (Art. no. 506525)

\* In compliance with EU Noise at Work legislation, EU Noise at Work Directive (Directive 2003/10/EC)

Freedom to talk

# IMPACT SD

Make talk count. When your work demands perfect communication all day every day, this wireless DECT solution delivers consistent, high-quality performance. Optimize calls with premium audio from EPOS' unique technologies and enjoy all-day user comfort.

- Discover premium audio for excellent call quality  
Maximize speech intelligibility with EPOS Voice Clarity and ultra noise-cancelling microphone
- Talk all day in comfort  
With up to 12 hours talk time and lightweight headset with extra soft ear pads
- Enjoy wireless freedom and dual-connectivity  
With wireless reach of up to 180 m/590 ft and the flexibility of dual-connectivity to both desk phone and PC/softphone
- Choose your wearing style  
With comfortable, smart headsets designed to suit every personal \* preference; headband, ear hook or optional neckband
- Easy magnetic docking and charging  
Dock the headset to the magnetic charge interface and be sure it's charged and ready to go for your next call



MSRP: €249/€299 & \$269 /\$329





## Comparison overview IMPACT SD Series



IMPACT  
SD Office ML

1000561



IMPACT  
SD Pro 1 ML

1000562



IMPACT  
SD Pro 2 ML

1000563

Art. no.	1000561	1000562	1000563
<b>Wearing style</b>			
Single-sided headset	•	•	
Double-sided headset			•
Leatherette ear hook	•		
Leatherette ear pad	•		
Extra soft leatherette ear pad/s		•	•
Headband	•	•	•
Neckband	[•]		
<b>Connectivity</b>			
Desk phone	•	•	•
Softphone/PC	•	•	•
Dual device connectivity	•	•	•
<b>Microphone</b>			
Noise-cancelling	•		
Ultra noise-cancelling		•	•
Bendable and long boom arm		•	•
<b>Features &amp; technologies</b>			
EPOS Voice™ technology	•	•	•
EPOS ActiveGard® technology	•	•	•
Noise at Work, EU limiter*	•	•	•
<b>Unified communications</b>			
Optimized for UC	•	•	•

[•] Neckband available as accessory (Art. no. 506525)

\* In compliance with EU Noise at Work legislation, EU Noise at Work Directive (Directive 2003/10/EC)

Freedom and flexibility

# IMPACT D 10

Bring wireless freedom within reach with a DECT solution that delivers clear, natural sound and the flexibility to move around your office. All-day comfort and a choice of wearing styles completes this uncompromising audio solution.

- Ensure premium audio for clear calls  
With EPOS Voice Clarity and noise-cancelling microphone for natural, clear conversations
- Move freely with powerful wireless reach  
Up to 55 m/180 ft in typical offices, up to 180 m/590 ft line of sight, and up to 12 hours talk time
- Connect simply to one device  
Plug-and-play with single-connectivity to either desk phone or PC/ softphone
- Choose your wearing style  
With comfortable headsets to suit your personal preference; headband, ear hook or optional neckband
- Easy magnetic docking and charging  
Dock the headset to the magnetic charge interface and be sure it's charged and ready to go for your next call



MSRP: from €239/\$299





## Comparison overview IMPACT D 10 Series



IMPACT  
D 10 USB ML



IMPACT  
D 10 PHONE

Art. no.	IMPACT D 10 USB ML	IMPACT D 10 PHONE
EU	1000574	1000570
UK	N/A	1000571
US	1000575	1000572
AUS	1000576	1000573
<b>Wearing style</b>		
Single-sided headset	•	•
Headband	•	•
Ear hook	•	•
Neckband	[•]	[•]
<b>Connectivity</b>		
Desk phone		•
Softphone/PC	•	
Single device connectivity	•	•
<b>Microphone</b>		
Noise-cancelling	•	•
<b>Features &amp; technologies</b>		
Noise at Work, EU limiter*	•	•
EPOS ActiveGard® technology	•	•
<b>Unified communications</b>		
Optimized for UC	•	

[•] Neckband available as accessory (Art. no. 506525). Click-on adapter from HSA 20 accessory set (Art. no. 506524) needed for mounting  
\* In compliance with EU Noise at Work legislation, EU Noise at Work Directive (Directive 2003/10/EC)

Keep talk moving

# IMPACT MB Pro

Ensure high-quality communication with the Bluetooth® headset that complements your dynamic working style – in the office and on-the-go. The IMPACT MB Pro Series delivers natural-sounding communication experiences with advanced audio technologies.

- Enjoy premium audio for natural-sounding conversations  
With EPOS Voice Clarity for a natural listening experience and ultra noise-cancelling microphone for optimized speech
- Experience wireless freedom  
Multi-point connectivity with two Bluetooth® devices connected simultaneously and up to 25 m/82 ft wireless range
- Talk for hours  
Up to 15 hours' talk time for all-day use
- Discover easy call handling  
Mute, adjust volume and answer/end calls easily
- Convenient charger stand  
Easy headset docking in between calls with magnetic charge interface



MSRP: from €159/\$199



Certified for  
Microsoft Teams



## Comparison overview IMPACT MB Pro Series



IMPACT  
MB Pro 2 UC ML

1000567



IMPACT  
MB Pro 1 UC ML

1000565



IMPACT  
MB Pro 2

1000566



IMPACT  
MB Pro 1

1000564

Art. no.	1000567	1000565	1000566	1000564
<b>Wearing style</b>				
Single-sided headset		•		•
Double-sided headset	•		•	
Headband	•	•	•	•
<b>Connectivity</b>				
Softphone/PC	•	•		
Mobile phone	•	•	•	•
Tablet	•	•	•	•
Multi device connectivity**	•	•	•	•
<b>Microphone</b>				
Ultra noise-cancelling	•	•	•	•
<b>Features &amp; technologies</b>				
Room Experience™ technology	•		•	
EPOS ActiveGard® technology	•	•	•	•
Multimedia and music listening	•	•	•	•
USB dongle and charger stand	•	•		
<b>Unified communications</b>				
Optimized for UC	•	•		
Microsoft Teams Certified***	•	•		

\* Room Experience™ only included in IMPACT MB Pro 2 variants.

\*\* Connects up to two devices at the same time

\*\*\* The Microsoft Teams Certified products require installation of EPOS Connect – download the software from our website: [eposaudio.com/epos-connect](https://eposaudio.com/epos-connect)



Outstanding clear communication

# IMPACT 600

Benefit from outstanding audio in dynamic office spaces with the premium wired IMPACT 600 Series. You get reliable, high-quality design with a headset crafted to perfection and easy call handling to boost your productivity.

- Outstanding sound for perfect speech clarity  
Ultra noise-cancelling microphone for perfect speech in noisy environments and Active Noise Cancellation for user comfort
- Enjoy high-quality design and craftsmanship  
Brushed aluminum and stainless-steel components, Vectran™ reinforced cables and strong, unibody headband
- Handle calls seamlessly and conveniently  
With proximity sensor technology, and in-line call control for easy call management
- Easy to store and portable  
With fold-flat ear cups and carry pouch
- Exceptional wearing comfort  
With soft leatherette ear pads for all-day comfort and powerful sound



MSRP: from €130/\$140



Certified for  
Microsoft Teams

# Comparison overview

## IMPACT 600 Series



Art. no.	1000650	1000670	1000669	1000645	1000643	1000644	1000642	1000553	1000552	1000581	1000580	1000557	1000556	1000555	1000554	1000641	
<b>Wearing style</b>																	
Single-sided headset			•		•		•			•			•			•	
Double-sided headset	•	•		•		•		•		•		•		•		•	
Headband	•	•	•	•	•	•	•	•	•	•	•	•	•	•	•	•	
<b>Connectivity</b>																	
Desk phone via Easy Disconnect										•	•	•	•	•	•	•	
Softphone/PC via USB	•			•	•			•	•						[-]	[-]	[-]
Softphone/PC via USB-C		•	•														
Mobile phone via 3.5 mm jack		•	•	•	•	•	•								[-]	[-]	
Tablet via 3.5 mm jack		•	•	•	•	•	•								[-]	[-]	
<b>Special device connectivity</b>																	
Hearing aid devices*																	•
Devices with low impedance output												•	•				
Narrowband desk phones										•	•						
<b>Microphone</b>																	
Ultra noise-cancelling	•	•	•	•	•	•	•	•	•	•	•	•	•	•	•	•	
<b>Features &amp; technologies</b>																	
Active Noise Cancellation	•																
Proximity sensor technology	•																
In-line call control unit	•	•	•	•	•	•	•	•	•						[-]	[-]	
EPOS ActiveGard® technology	•	•	•	•	•	•	•	•	•	•	•	•	•	•	•	•	
Optimized for communications & multimedia	•	•	•	•	•	•	•	•	•								
Enhanced music audio performance	•	•	•	•	•	•	•										
Noise at Work, EU limiter**	•	•	•	•	•	•	•	•	•						[-]	[-]	[-]
Hearing aid-compatible telecoil transmitters																	•
<b>Unified communications</b>																	
Optimized for UC	•	•	•	•	•			•	•								
Skype for Business Certified***	•	•	•	•	•			•	•								
Microsoft Teams Certified****	•			•	•			•	•								

[-] Option available with additional accessories

\* Optimized for all standard hearing aids (T-mode or MT-mode)

\*\* In compliance with EU Noise at Work legislation, EU Noise at Work Directive (Directive 2003/10/EC)

\*\*\* Skype for Business Certification applies when USB/USB-C is connected to PC or Mac

\*\*\*\* The Microsoft Teams Certified products require installation of EPOS Connect - download the software from our website: [eposaudio.com/epos-connect](https://eposaudio.com/epos-connect)

Put talk in focus

# IMPACT 200

Maintain energy and focus with clear communication between you and your listener and enjoy robust wired headsets with all-day comfort. In busy contact centers these headsets are both reliable and user-friendly.

- Experience communication with clarity  
With EPOS Voice Clarity and noise-cancelling microphone for natural, clear conversations
- Enjoy all-day wearing comfort  
Acoustic foam ear pads with soft leatherette covers and CircleFlex™ dual-hinge ear cup system for a perfect fit
- Benefit from robust design  
Durable construction with lightweight, metal reinforced headband designed for years of daily use
- Protect your hearing  
From acoustic shock with EPOS ActiveGard® technology
- Easy call management  
With in-line call control unit to mute, adjust volume and answer/end calls



MSRP: from €95/\$95



Certified for  
Microsoft Teams

# Comparison overview

## IMPACT 200 Series

										
Art. no.	1000579	1000578	1000517	1000516	1000658	1000657	1000519	1000518	1000515	1000514

### Wearing style

Single-sided headset		•		•		•		•		•
Double-sided headset	•		•		•		•		•	
Headband	•	•	•	•	•	•	•	•	•	•

### Connectivity

Desk phone via Easy Disconnect					•	•	•	•	•	•
Softphone/PC via USB	•	•	•	•					[•]	[•]
Mobile phone via 3.5 mm jack									[•]	[•]
Tablet via 3.5 mm jack									[•]	[•]

### Special device connectivity

Devices with low impedance output							•	•		
Devices with high impedance/narrowband output					•	•				

### Microphone

Noise-cancelling	•	•	•	•	•	•	•	•	•	•
------------------	---	---	---	---	---	---	---	---	---	---

### Features & technologies

In-line call control unit	•	•								
EPOS ActiveGard® technology	•	•	•	•	•	•	•	•	•	•
Optimized for communication & multimedia	•	•	•	•						
Noise at Work, EU limiter*	•	•	•	•	[•]	[•]				

### Unified communications

Optimized for UC	•	•	•	•						
Microsoft Teams Certified**	•	•								

[•] Option available with additional accessories

\* In compliance with EU Noise at Work legislation, EU Noise at Work Directive (Directive 2003/10/EC)

\*\* The Microsoft Teams Certified products require installation of EPOS Connect - download the software from our website: [eposaudio.com/epos-connect](https://eposaudio.com/epos-connect)

Let's start talking

# IMPACT 100

Enjoy more natural-sounding conversations and great quality audio with headsets designed for enterprises introducing Unified Communications. Experience the difference unique EPOS technology can make to your efficiency and well-being.

- Ensure quality sounding calls  
With EPOS Voice Clarity and noise-cancelling microphone for natural, clear conversations
- Deployment friendly headset  
Compatible with all major Unified Communications platforms
- Easy call management  
With in-line call control unit to mute, adjust volume and answer/end calls
- Enjoy great comfort  
Ultra-lightweight headset with comfortable acoustic foam ear pads
- Protect your hearing  
From acoustic shock with EPOS ActiveGard® technology



MSRP: from €40/\$50



Certified for  
Microsoft Teams



## Comparison overview IMPACT 100 Series



IMPACT  
SC 45 USB MS



IMPACT  
SC 75 USB MS



IMPACT  
SC 60 USB ML



IMPACT  
SC 30 USB ML

Art. no.	1000634	1000635	1000551	1000550
<b>Wearing style</b>				
Single-sided headset	•			•
Double-sided headset		•	•	
Headband	•	•	•	•
<b>Connectivity</b>				
Softphone/PC via USB	•	•	•	•
<b>Microphone</b>				
Noise-cancelling	•	•	•	•
<b>Features &amp; technologies</b>				
In-line call control unit	•	•	•	•
EPOS ActiveGard® technology	•	•	•	•
Optimized for communication & multimedia	•	•	•	•
Noise at Work, (EU directive)*	•	•	•	•
<b>Unified communications</b>				
Optimized for UC	•	•	•	•
Microsoft Teams Certified**	•	•	•	•

\* In compliance with EU Noise at Work legislation. EU Noise at Work Directive (Directive 2003/10/EC)

\*\* The Microsoft Teams Certified products require installation of EPOS Connect - download the software from our website: [eposaudio.com/epos-connect](https://eposaudio.com/epos-connect)

EPOS Busylight

# Advanced Busy Light

The Advanced Busy Light with ringer is designed for open office workers who need time to concentrate while never missing a call. A LED unit signals status and calls, while automatically synching with Microsoft Teams, Skype for Business and Cisco Jabber.



MSRP: €39/\$39

ADAPT Line

# Work your way



ADAPT 600 Series  
Wireless Bluetooth®



ADAPT 500 Series  
Wireless Bluetooth®



ADAPT 400 Series  
Wireless Bluetooth®



ADAPT 300 Series  
Wireless Bluetooth®



ADAPT 100 Series  
Wired headsets



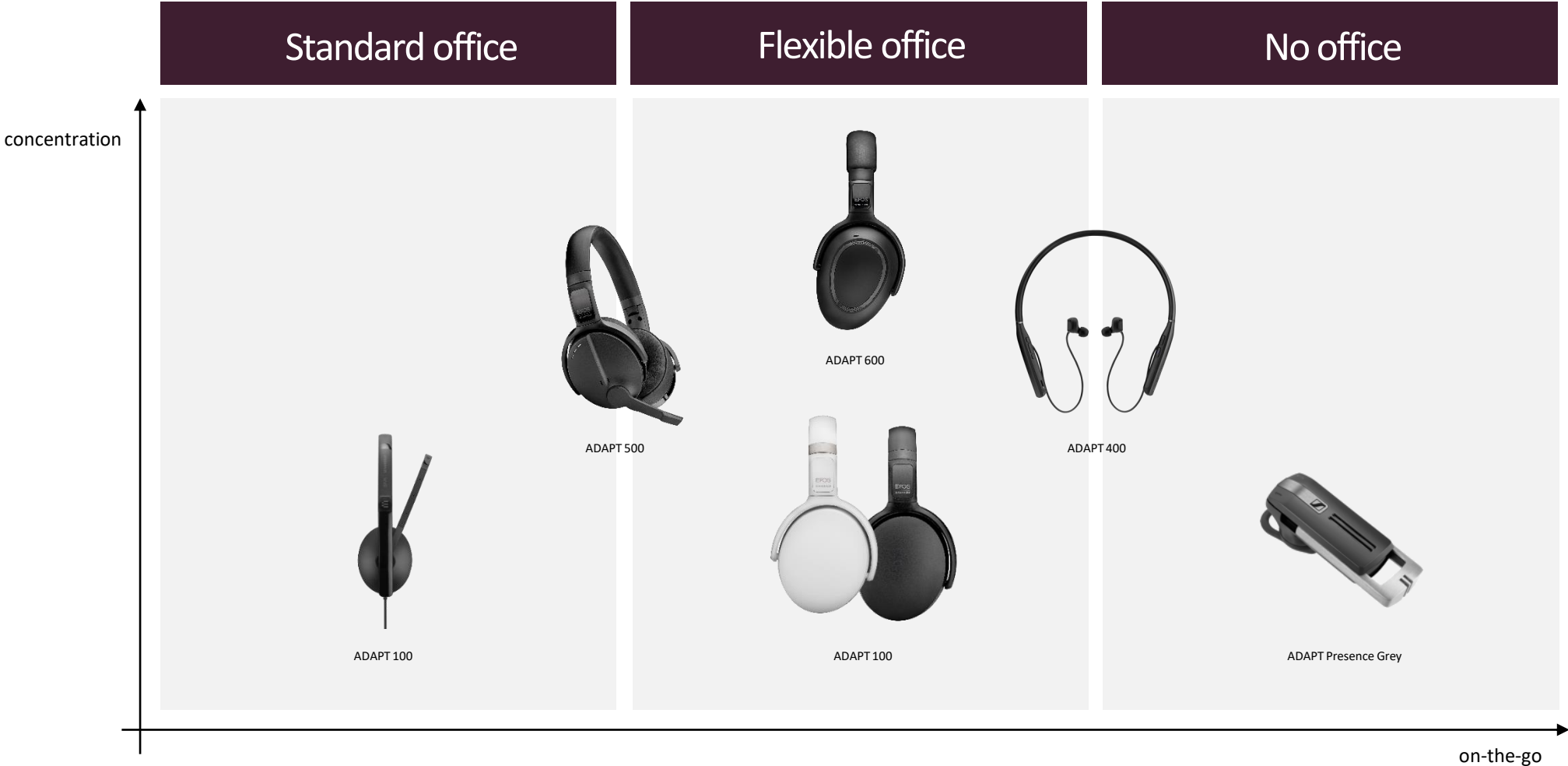
ADAPT Presence Series  
Wireless Bluetooth®

Demand audio experiences you can personalize, powered by EPOS AI™ – technology that adapts to your sound environment and boosts working performance. Communicate and concentrate according to your working needs with flawless calls and Adaptive ANC.



ADAPT Line

# Portfolio fit



ADAPT Line

# Trends

- The way we work is changing
- More people work on-the-go, in open office environments and more flexible use cases allow for working from anywhere
- “Omni-office” mentality enables workforce to be productive in any environment
- Collaborative work environments require high performing communication tools that enable concentration
- ANC is nearly a requirement in open office floor plans and flexible working environments
- Consumerization of technology
- Culture of Millennials (expectations to working tools)



Work wherever, whenever

# ADAPT 600

Maximize focus and productivity anywhere with the ultimate headset powered by EPOS AI™ for crystal clear calls, adaptive ANC and superior stereo sound. Enjoy a unique UC optimized solution with machine learning enhanced microphone performance.

- Superb call clarity powered by EPOS™  
Machine learning developed algorithms optimize voice pick up, for a natural listening experience from three advanced microphones
- Regain concentration anytime, anywhere  
Four adaptive ANC microphone system monitors your working environment and adjusts noise reduction in open offices, while reducing wind noise outdoors
- Get organized with Alexa  
Tap and hold to activate Alexa and stay on top of your day-to-day business. Never miss a meeting and plan your schedule both in and out of the office
- Ensure clear calls with UC certified solution  
Certified for Microsoft Teams and optimized for UC
- Experience superior sound to increase your focus  
Renowned stereo sound and a personalized audio profile means you can enjoy high-quality music to help your focus on work



MSRP: €399/\$439



Certified for  
Microsoft Teams



# Comparison overview ADAPT 600 Series



ADAPT  
660

Art. no.	1000200
<b>Wearing style</b>	
Double-sided headset	•
Headband	•
Over-the-ear	•
Large pillow-soft leatherette ear pads	•
<b>Connectivity</b>	
Softphone/PC	•
Mobile phone	•
Tablet	•
Multi-point connectivity*	•
<b>Microphone</b>	
Digital MEMS beamforming microphone (3 microphones)	•
<b>Features &amp; technologies</b>	
Hybrid adaptive ANC technology with 4 microphones	•
EPOS ActiveGard® technology	•
SpeakFocus™ technology	•
WindSafe™ technology	•
TalkThrough™ technology	•
Multimedia	•
USB dongle	•
Carry case	•
<b>Unified communications</b>	
Optimized for UC	•
Microsoft Teams**	•
Alcatel Lucent certified	•

\* Connects to two actively paired Bluetooth® devices and eight devices in the pairing list. Bluetooth® 5.0  
 \*\* Microsoft Teams certification applies when USB/USB-C dongle or cable is connected to PC or Mac.

Stay agile, achieve more

# ADAPT 500

Cut through the noise and make your presence felt with a headset that keeps you productive in open offices, or on the move. Get clearer calls with the discreet boom arm for excellent speech intelligibility and use ANC in noisy situations to focus.

- Get clearer calls on demand  
The discreet, foldable boom arm and 2 advanced microphones optimize voice pick up for clearer office and mobile calls
- Concentrate anytime, anywhere with ANC  
4 ANC microphones reduce background noise to increase work focus, together with plush ear pads for good sound isolation
- Ensure clear calls with UC certified solution  
Certified for Microsoft Teams and optimized for UC
- Work your way  
Portable design that works the way you do with discreet boom arm, music performance, noise cancellation and long battery life
- Enjoy comfort and convenience  
Soft, on-ear wearing style for all-day comfort. Ear cups rotate and dual-foldable design fits neatly into the handy carry case



MSRP: €249/€299 & \$269 /\$329





## Comparison overview ADAPT 500 Series



ADAPT  
560

1000207



ADAPT  
563

1000208

Art. no.	1000207	1000208
<b>Wearing style</b>		
Double-sided headset	•	•
Headband	•	•
Over-the-ear	•	•
<b>Connectivity</b>		
Softphone/PC	•	
Mobile phone	•	•
Tablet	•	•
Multi-point connectivity*	•	•
<b>Microphone</b>		
2 beamforming MEMS microphones	•	•
<b>Features &amp; technologies</b>		
Hybrid ANC technology with 4 microphones	•	•
EPOS ActiveGard® technology	•	•
Multimedia	•	•
USB dongle	•	
Carry case	•	
<b>Unified communications</b>		
Optimized for UC	•	•
Google Meet and Voice certified	•	
Microsoft Teams**	•	
Alcatel Lucent certified	•	

\* Connects to two actively paired Bluetooth® devices and eight devices in the pairing list. Bluetooth® 5.0  
 \*\* Microsoft Teams certification applies when USB/USB-C dongle or cable is connected to PC or Mac.

Take great sound anywhere

# ADAPT 400

Keep moving, stay focused and be productive with an in-ear, neckband headset that delivers rich, natural sound and ANC whether at work or commuting. Tune into clear business calls anywhere, with a vibrating neckband so you'll never miss a call.



- Boost your productivity with ANC  
Your in-ear neckband headset to maintain concentration in noisy environments with an advanced 4 microphone ANC system
- Clear business calls – UC optimized solution  
Impressive sound with a Microsoft Teams certified/UC optimized solution and subtle vibrating neckband signaling incoming calls
- Enjoy superior comfort and fit  
Lightweight construction and comfortable earbuds with a choice of 4 ear tips, plus versatile single or double-sided use
- Stay connected to your favorite devices  
Multi-point connectivity to 2 actively paired Bluetooth® devices and 8 devices in the pairing list
- Talk all day  
With up to 14 hours of talk time

MSRP: €299/\$329



Certified for  
Microsoft Teams



## Comparison overview ADAPT 400 Series



ADAPT  
460



ADAPT  
460T

Art. no.	1000204	1000205
<b>Wearing style</b>		
Single and double-sided wearing style	•	•
In-ear neckband Bluetooth® headset with ANC	•	•
<b>Connectivity</b>		
Softphone/PC	•	•
Mobile phone	•	•
Tablet	•	•
Multi-point connectivity*	•	•
<b>Microphone</b>		
2 beamforming MEMS microphones	•	•
<b>Features &amp; technologies</b>		
Hybrid ANC technology with 4 microphones	•	•
EPOS ActiveGard® technology	•	•
Multimedia	•	•
USB dongle	•	•
Carry case	•	•
<b>Unified communications</b>		
Optimized for UC	•	
Microsoft Teams**		•
Google Meet and Voice certified	•	
Alcatel Lucent certified	•	

\* Connects to two actively paired Bluetooth® devices and eight devices in the pairing list. Bluetooth® 5.0  
 \*\* Microsoft Teams certification applies when USB/USB-C dongle or cable is connected to PC or Mac.



Work your way in style

# ADAPT 300

Stay focused with ANC that reduces background noise, helps you concentrate in busy open offices and boosts productivity on-the-go. Ensure clear business calls with a solution optimized for UC and switch easily between devices as you multitask.



- Concentrate in noisy environments  
Thanks to Active Noise Cancellation that reduces background noise to increase work focus
- Ensure clear calls with certified solutions  
Certified for Microsoft Teams and optimized for UC
- Switch effortlessly between your favorite devices  
With multi-point connectivity to any two Bluetooth® devices simultaneously
- Enjoy stylish, comfortable design  
On and off work with a contemporary look in black or white and soft, ergonomic ear pads for lasting comfort
- High-quality stereo sound and reliable performance  
Stream stereo music at work or on your commute and benefit from up to 46 hours of battery life

MSRP: €249/\$269



Certified for  
Microsoft Teams



## Comparison overview ADAPT 300 Series



ADAPT  
360

1000209



ADAPT  
360 white

1000210

Art. no.	1000209	1000210
<b>Wearing style</b>		
Double-sided headset	•	•
Headband	•	•
Over-the-ear	•	•
Large thick leatherette ear pads	•	•
<b>Connectivity</b>		
Softphone/PC	•	•
Mobile phone	•	•
Tablet	•	•
Multi-point connectivity*	•	•
<b>Microphone</b>		
2 beamforming MEMS microphones	•	•
<b>Features &amp; technologies</b>		
Active Noise Cancellation (ANC)	•	•
EPOS ActiveGard® technology	•	•
Multimedia	•	•
USB dongle	•	•
Storage pouch	•	•
<b>Unified communications</b>		
Optimized for UC	•	•
Microsoft Teams**	•	•
Google Meet and Voice certified	•	•
Alcatel Lucent certified	•	•

\* Connects to two actively paired Bluetooth® devices and eight devices in the pairing list. Bluetooth® 5.0  
 \*\* Microsoft Teams certification applies when USB/USB-C dongle or cable is connected to PC or Mac.

Activate your potential

# ADAPT 100

Activate your potential

Work your way with a stylish, comfortable headset designed for the demands of today's hybrid workplace with ANC and superior stereo sound.

- **Microsoft Teams certified and optimized for UC**  
Get a seamless user experience from variants optimized for UC and certified for Microsoft Teams with a dedicated Teams button
- **Call quality meets stylish design**  
Guarantee business grade communication with a discreet boom arm, which folds away simply for a stylish look when out and about
- **Concentrate wherever you work**  
Thanks to ANC, comfortable ear pads and stereo sound, you can focus without disruption whatever your workspace
- **Plug and play device connectivity**  
With the 3.5 mm jack USB-A or USB-C connectors, versatile workers on the move and in the office get simple, reliable functionality
- **Enjoy enhanced comfort**  
Newly designed, large on-ear leatherette or foam ear pads provide great comfort and noise damping



MSRP: €40-139



Certified for  
Microsoft Teams

# Comparison overview

## ADAPT 100 Series

																						
Art. no.	1000219	1000218	1000221	1000220	1000902	1000906	1000916	1000920	1000900	1000904	1000914	1000918	1000901	1000905	1000915	1000919	1000899	1000903	1000913	1000917	1000908	1000907

### Wearing style

Single-sided									*	*	*	*					*	*	*	*		*	
Double-sided	*	*	*	*	*	*	*	*					*	*	*	*						*	
Headband	*	*	*	*	*	*	*	*	*	*	*	*	*	*	*	*	*	*	*	*	*	*	*
On-the-ear	*	*	*	*	*	*	*	*	*	*	*	*	*	*	*	*	*	*	*	*	*	*	*
Large leatherette ear pads	*	*	*	*	*	*	*	*	*	*	*	*										*	*
Large acoustic foam ear pads													*	*	*	*	*	*	*	*		*	*

### Connectivity

Softphone/PC via USB	*	*			*				*		*		*		*		*		*			*	*
Softphone/PC via USB-C			*	*			*	*		*		*		*	*	*		*	*	*	*		*
Mobile phone via 3.5 mm jack					*	*	*	*	*	*	*	*		*	*	*	*	*	*	*	*	*	*
Tablet via 3.5 mm jack					*	*	*	*	*	*	*	*		*	*	*	*	*	*	*	*	*	*

### Microphone

Noise-cancelling microphone	*	*	*	*	*	*	*	*	*	*	*	*	*	*	*	*	*	*	*	*	*	*	*
Hideable boom arm	*	*	*	*	*	*	*	*	*	*	*	*	*	*	*	*	*	*	*	*	*	*	*

### Features & technologies

Active Noise Cancellation (ANC)	*	*	*	*																			
In-line call control unit	*	*	*	*	*	*	*	*	*	*	*	*	*	*	*	*	*	*	*	*	*	*	*
Optimized for calls & multimedia	*	*	*	*	*	*	*	*	*	*	*	*	*	*	*	*	*	*	*	*	*	*	*
EPOS ActiveGard® technology	*	*	*	*	*	*	*	*	*	*	*	*	*	*	*	*	*	*	*	*	*	*	*
Carry pouch	*	*	*	*	*	*	*	*	*	*	*	*	*	*	*	*	*	*	*	*	*	*	*
Noise at Work, (EU directive)*	*	*	*	*	*	*	*	*	*	*	*	*	*	*	*	*	*	*	*	*	*	*	*

### Unified Communications

Optimized for UC	*	*	*	*	*	*	*	*	*	*	*	*	*	*	*	*	*	*	*	*	*	*	*
Microsoft Teams Certified***	**		**	*					*	*			*	*			*	*				*	*
Certified with Chromebook																						*	*

\* In compliance with EU Noise at Work legislation, EU Noise at Work Directive (Directive 2003/10/EC)

\*\* Skype for Business Certification applies when USB/USB-C is connected to PC or Mac

\*\*\* Microsoft Teams Certification applies when USB/USB-C is connected to PC or Mac

Perform on the move

# ADAPT Presence

The ADAPT Presence Series are premium Bluetooth® headsets for mobile professionals requiring excellent sound and voice clarity around the office, in the car and outdoors.



- Natural listening experience  
With EPOS Voice™ technology
- Adapts quickly to all sound environments  
Due to 3 digital noise-cancelling microphones
- Optimized speech clarity  
SpeakFocus™ technology enhances voice clarity
- Wind noise reduction  
WindSafe™ technology reduces wind noise in outdoor situations
- Background noise reduction  
Advanced Own-Voice-Detector reduces background noise for your listener when you are silent





## Comparison overview ADAPT Presence Series



ADAPT  
Presence Grey UC

1000660



ADAPT  
Presence Grey Business

1000659

Art. no.	1000660	1000659
<b>Wearing style</b>		
Single-sided headset	•	•
Ear hook or ear sleeve	•	•
Headband	[ - ]	[ - ]
<b>Connectivity</b>		
Softphone/PC	•	
Mobile phone	•	•
Tablet	•	•
Multi device connectivity*	•	•
<b>Microphone</b>		
3 digital noise-cancelling microphones	•	•
<b>Features &amp; technologies</b>		
Advanced Own-Voice-Detector	•	•
SpeakFocus™ technology	•	•
WindSafe™ technology	•	•
EPOS ActiveGard® technology	•	•
USB dongle	•	[ - ]
Carry case	•	
Charger stand	[ - ]	[ - ]
<b>Unified communications</b>		
Optimized for UC	•	
Skype for Business Certified	•	

[ - ] Available as optional accessories. ADAPT Presence headband (Art. no. 506476). CH 20 MB headset charger stand (Art. no. 506039)

\* Connects up to two devices at the same time

EXPAND Line

# Seamless collaboration



EXPAND 20 Series  
Wired Speakerphones

EXPAND 30 Series  
Bluetooth® Speakerphones

EXPAND 80 Series  
Bluetooth® Speakerphones

Expand your ability to collaborate across workspaces, locations and time zones. Simply plug-and-play and experience conference calls with unrivalled clarity, enabling you to participate and engage with the same confidence as being there in person.



# Portfolio fit

Huddle & small meeting rooms



Medium meeting rooms



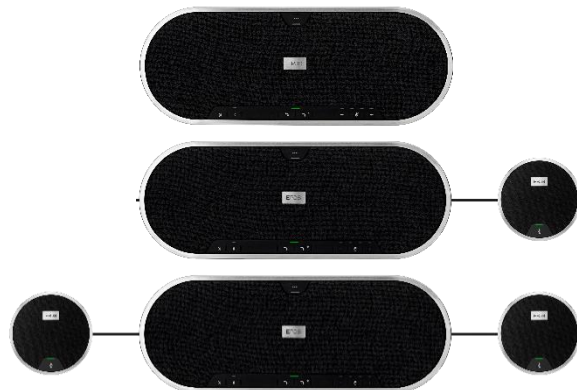
Large meeting rooms



EXPAND 20 Series (up to 4 in-room participants)



EXPAND 30 Series (up to 8 in-room participants)



EXPAND 80 Series (up to 16 in-room participants)

EXPAND 80 incl. one expansion mic (up to 24 in-room participants)

EXPAND 80 incl. two expansion mics (up to 32 in-room participants)



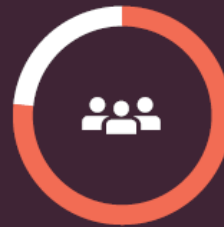
EXPAND Line

# Trends

- For the 69%\* of office workers who use a headset or speakerphone for conference calls, seamless collaboration is vital. Which is exactly why we created the EXPAND Line
- We know that 59%\* of workers use an audio solution every single day, so we created this line to be of the best quality and reliability out there
- Because 37%\* of every day collaborators spend more than half their time away from their desk, the EXPAND Line is designed and crafted for flexibility, ease-of-use and perfect connectivity with all devices

## 69%

Need seamless  
collaboration



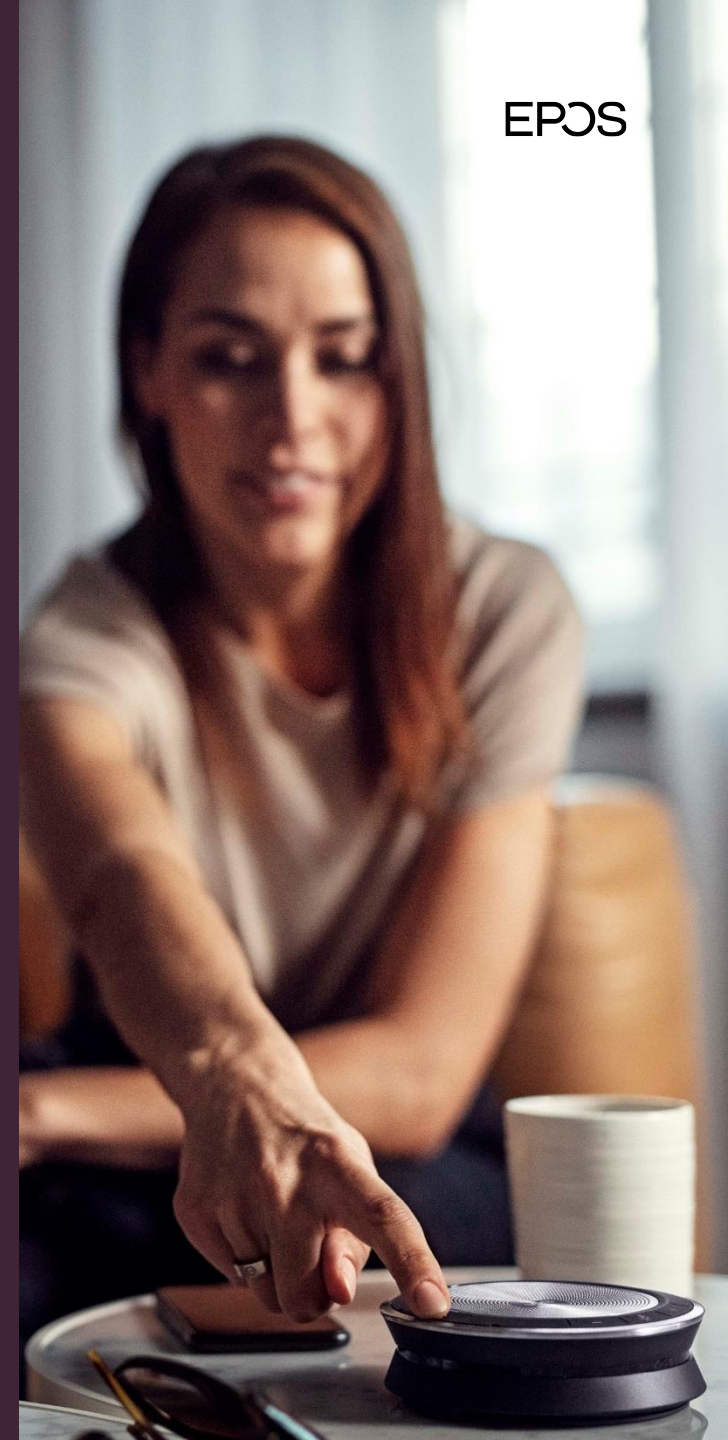
## 59%

Use audio solution  
every day



## 37%

Of collaborators  
spend more than  
4 hours away  
from desk



Unite your Team

# EXPAND 80

Unite colleagues with a premium, scalable Bluetooth® speakerphone for up to 16 in-room participants. Be heard thanks to six adaptive, beamforming microphones that isolate voices from room reverb and ambient noise. A superior speaker for rich, natural sound.



- Get your message through with EPOS Voice™  
Six adaptive, beamforming microphones and highly advanced DSP intelligently isolate the human voice from room reverb and ambient noise
- Rich, natural sound  
Powerful ultra-low distortion speaker in a unique patent pending suspended speaker box fills the room with outstanding sound, enabling superior duplex performance that allow for simultaneous speak
- Superior craftsmanship, statement Scandinavian design  
Crafted with high-quality materials and fabric by Kvadrat for excellent resonance damping and a premium, minimal aesthetic
- Expand your meetings  
Attach up to two expansion microphones for larger meetings
- Set up your conference call in seconds  
Enjoy multiple connectivity options, an intuitive user interface and one touch access to your preferred Voice Assistant or Microsoft Teams

MSRP: €649/\$719/£569



Certified for  
Microsoft Teams



# Comparison overview Speakerphone Series

	 <b>EXPAND 80</b>	 <b>EXPAND 80T</b>
<b>Art. no.</b>	1000202	1000203
<b>Connectivity</b>		
Bluetooth®	•	•
USB	•*	•*
USB-C	•	•
NFC	•	•
<b>Devices</b>		
Softphone/PC	•	•
Mobile phone	•**	•**
Tablet	•**	•**
<b>Workspace &amp; size</b>		
Huddle/small rooms (2-6 participants)	•	•
Mid sized meeting rooms (6-12 participants)	•	•
Large meeting rooms (12+ participants)	•	•
<b>Microphones</b>		
Beamforming microphones	6	6
<b>Features</b>		
USB dongle	•	•
Multimedia and music listening	•	•
Conferencing across devices	•	•
Kensington lock support	•	•
EXPAND 80 Mic	(-)	(-)
<b>Unified communications</b>		
Optimized for UC	•	•
Certified for Microsoft Teams	•	•
<b>Design</b>		
Kvadrat fabric	•	•

(-) Available as additional accessory  
 \* Via included USB-C to USB-A adapter  
 \*\* When connected via USB-C performance is device dependent

Instant conferencing

# EXPAND 30

Wherever you and your colleagues are, enjoy instant, high-quality conferencing with a portable, wireless speakerphone for today's mobile workforce.



- Enjoy instant conferencing anywhere  
With portable design, Bluetooth® or USB-C connections, multi-point connectivity – up to three devices and one touch access to Voice Assistant / Microsoft Teams
- Get exceptional audio performance  
With EPOS Voice™ technology, ultra-low distortion speaker and two echo and noise-cancelling microphones with advanced algorithms
- Natural conversation experience  
With industry-leading duplex performance that allows simultaneous speech
- Crafted to perfection  
From premium-quality materials in a compact, lightweight design with convenient cable winding and safe dongle storage
- For personal or shared use  
For your personal use or to equip huddle spaces and small meeting rooms for up to 8 participants




MSRP: €189/\$209/£165



Certified for  
Microsoft Teams



# Comparison overview Speakerphone Series

	 <b>EXPAND SP 30</b>	 <b>EXPAND SP 30 +</b>	 <b>EXPAND SP 30T</b>
<b>Art. no.</b>	1000223	1000224	1000225
<b>Connectivity</b>			
Bluetooth®	•	•	•
USB	•*	•*	•*
USB-C	•	•	•
NFC	•	•	•
<b>Devices</b>			
Softphone/PC	•	•	•
Mobile phone	•**	•**	•**
Tablet	•**	•**	•**
<b>Workspace &amp; size</b>			
Own desk (1 participant)	•	•	•
Personal rooms (1 participant)	•	•	•
Huddle/small rooms (2-6 participants)	•	•	•
Mid sized meeting rooms (6-12 participants)	((-))	((-))	((-))
<b>Microphones</b>			
Beamforming microphones	2	2	2
<b>Features</b>			
USB dongle	(-)	•	•
Multimedia and music listening	•	•	•
Conferencing across devices	•	•	•
<b>Unified communications</b>			
Optimized for UC	•	•	•
Certified for Google Meet		•	
Certified for Microsoft Teams			•
<b>Design</b>			
Stainless steel	•	•	•

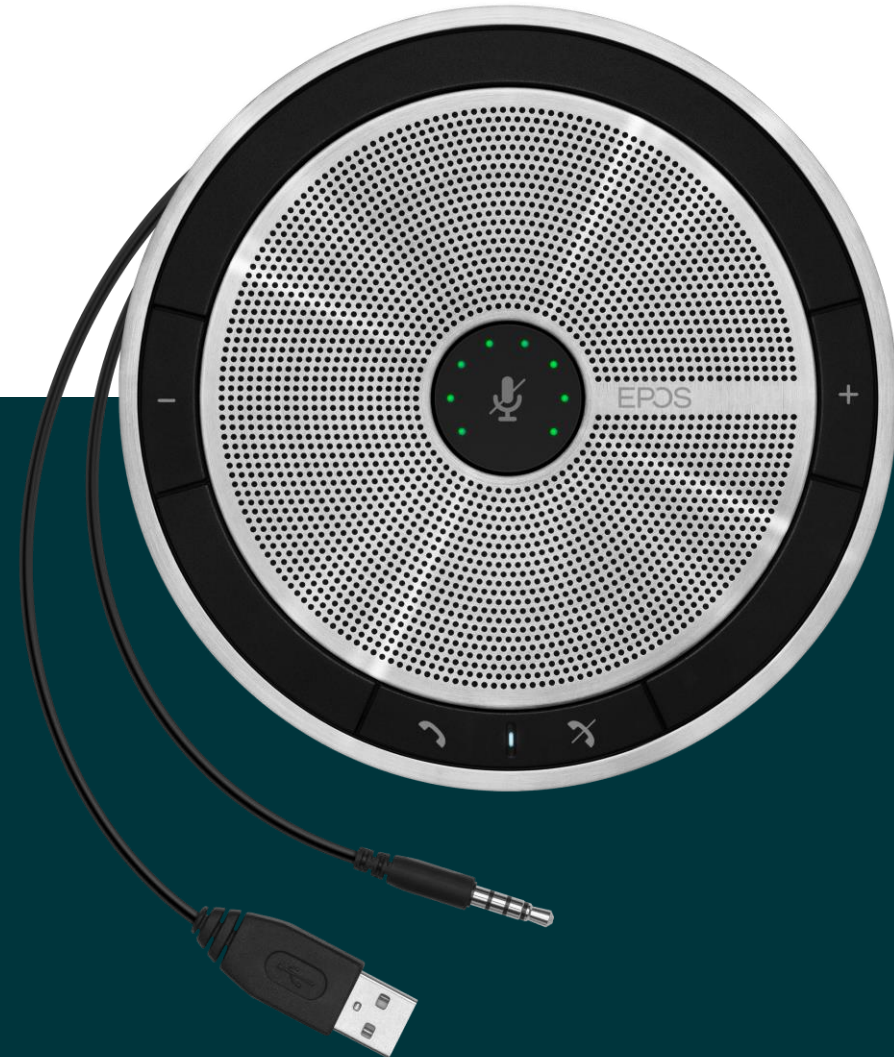
(-) Available as additional accessory  
 ((-)) Up to 8 participants  
 \* Via included USB-C to USB-A adapter  
 \*\* When connected via USB-C performance is device dependent

Plug-n-play conferencing

# EXPAND 20

Enjoy excellent conferencing with a portable wired speakerphone solution. Simply plug-and-play, wherever you want to work.

- Experience plug-and-play conferencing anywhere  
With compact, lightweight design, choice of USB or 3.5 mm jack and up to 20 hours of use
- Get premium sound for better meetings  
EPOS quality sound, duplex performance and echo cancellation for natural conversations without straining your voice
- Personal or small group conference calls  
Easy to take with you on-the-go for personal use or place in smaller meeting rooms
- Enjoy high-quality design  
That looks as good as it sounds, and is crafted to perfection with high-quality materials
- As easy as it gets  
With an intuitive user interface – simply connect to your PC/softphone, mobile phone or tablet and you are ready to talk





## Comparison overview Speakerphone Series



EXPAND  
SP 20

Art. no.	1000226
<b>Connectivity</b>	
USB	•
3.5 mm jack	•
<b>Devices</b>	
Softphone/PC	•
Mobile phone	•
Tablet	•
<b>Workspace &amp; size</b>	
Own desk (1 participant)	•
Personal rooms (1 participant)	•
Huddle/small rooms (2-6 participants)	•
<b>Microphones</b>	
Beamforming microphones	1
<b>Features</b>	
Multimedia and music listening	•
Conferencing across devices	•
<b>Unified communications</b>	
Optimized for UC	•
<b>Design</b>	
Stainless steel	•

COMMAND line

# Always in control



COMMAND 46 Series



COMMAND 600 Series



COMMAND 200 Series



COMMAND 27 Series



COMMAND 110 Series

A line of premium headsets designed for the challenges of ATC and C3 workplaces, when consistent operational excellence is a must. Reliable EPOS solutions deliver the audio and design quality that enable professional performance at the highest level.



Focused and in control

# COMMAND 46-II

Ensure consistent, reliable communication and all-day comfort with a lightweight headset designed to keep you in complete control in demanding sound environments. The noise-cancelling microphone filters out background noise and delivers optimal speech clarity perfect for ATC and C3 use.

- Consistent, reliable communication with EPOS Voice™ technology  
Voice enhancing technology with noise-cancelling microphone delivers perfect voice transmission and reception for listeners
- Supreme compatibility with all ATC and C3 applications  
Works for every application with a choice of electret/dynamic microphone, and single sided or double sided earcup model
- Multitask with two channel stereo application  
Enabling multi-channel communication so you can switch between different calls
- Protect your hearing with EPOS ActiveGard®  
Guards against acoustic injury caused by sudden sound bursts on the line without risk of communication drop-out
- Exceptional all-day comfort  
Extremely lightweight design consists of; patented two-piece split headband and soft, acoustic foam ear pads





## COMMAND Headsets overview



	HMD 46-3-II	HMD 46-31-II	HME 46-3-II	HME 46-31-II	HME 46-35-II
Art. no.	1000250	1000252	1000249	1000251	1000248
<b>Headphone</b>					
Transducer	dynamic, open supra-aural	dynamic, open supra-aural	dynamic, open supra-aural	dynamic, open supra-aural	dynamic, open supra-aural
Frequency response	20 - 14,000 Hz	20 - 14,000 Hz	20 - 14,000 Hz	20 - 14,000 Hz	20 - 14,000 Hz
Impedance	300 Ω	300 Ω	300 Ω	300 Ω	300 Ω
Sound pressure evel (SPL)	95 dB @ 1 kHz, 1mW, mono 86 dB @ 1 kHz, TV	95 dB @ 1 kHz, 1mW, mono 103 dB @ 1 kHz, TV	95 dB @ 1 kHz, 1mW, mono 86 dB @ 1 kHz, TV	95 dB @ 1 kHz, 1mW, mono 86 dB @ 1 kHz, TV	99 dB @ 1 kHz, 1mW, mono 86 dB @ 1 kHz, TV
Distortion	< 1 % at 95 dB SPL (350 - 3,000 Hz)	< 1 % at 110 dB SPL (350 - 3,000 Hz)	< 1 % at 95 dB SPL (350 - 3,000 Hz)	< 1 % at 95 dB SPL (350 - 3,000 Hz)	< 1 % at 98 dB SPL (350 - 3,000 Hz)
Contact pressure	2.7 N	2.7 N	2.7 N	2.7 N	3.7 N
<b>Microphone</b>					
Type	BMD 46-413	BMD 46-413	BKE 46	BKE 46	BKE 46
Transducer principle	Dynamic microphone, noise-cancelling	Dynamic microphone, noise-cancelling	Electret microphone, noise-cancelling	Electret microphone, noise-cancelling	Electret microphone, noise-cancelling
Frequency response	100 - 12,000 Hz	100 - 12,000 Hz	100 - 15,000 Hz	100 - 15,000 Hz	100 - 15,000 Hz
Output voltage	0.5 mV / Pa	0.5 mV / Pa	17 - 100 mV / Pa adjustable, 80 mV / Pa, -2 dB (factory preset), equivalent to 800 mV at 114 dB SPL	17 - 100 mV / Pa adjustable, 80 mV / Pa, -2 dB (factory preset), equivalent to 800 mV at 114 dB SPL	17 - 100 mV / Pa adjustable, 80 mV / Pa, -2 dB (factory preset), equivalent to 800 mV at 114 dB SPL
Impedance	200 Ω	200 Ω	N/A	N/A	N/A
Supply voltage	N/A	N/A	N/A	8-16 VDC	8-16 VDC
<b>General</b>					
Weight without cable	150 g/5.29 oz	150 g/5.29 oz	150 g/5.29 oz	150 g/5.29 oz	110 g/5.29 oz
Operating temperature	-10 °C to +55 °C/ +14 °F to +131 °F	-10 °C to +55 °C/ +14 °F to +131 °F	-10 °C to +55 °C/ +14 °F to +131 °F	-10 °C to +55 °C/ +14 °F to +131 °F	-10 °C to +55 °C/ +14 °F to +131 °F
Storage temperature	-55 °C to +70 °C/ -67 °F to +158 °F	-55 °C to +70 °C/ -67 °F to +158 °F	-55 °C to +70 °C/ -67 °F to +158 °F	-55 °C to +70 °C/ -67 °F to +158 °F	-55 °C to +70 °C/ -67 °F to +158 °F
Connection cable	-	-	-	-	-
Length	-	-	-	-	-
Connectors	-	-	-	-	-

Demand clarity and durability

# COMMAND 600

Unleash your potential with a headset that stands up to the daily demands of ATC/C3 working environments. EPOS Voice™ technology ensures excellent communication with an ultra noise-cancelling microphone – guaranteeing commands come through loud and clear.

- Excellent communication with EPOS Voice™ technology  
Voice enhancing technology with ultra noise-cancelling microphone for excellent voice transmission and reception
- Protect your hearing with EPOS ActiveGard®  
Guards against acoustic injury without risk of communication drop-out
- Benefit from multi-channel communication  
With two channel application for air and land-based communication on SC 660 ATC/C3 AG
- Extreme durability you can rely on  
With stainless steel hinge on speaker joints which lasts for the long term
- Exceptional comfort throughout your shift  
With fully adjustable headband and generous leatherette ear pads made to maximize comfort





## COMMAND Headsets overview



SC 630  
ATC/C3 AG

1000250



SC 660  
ATC/C3 AG

1000252

Art. no.	1000250	1000252
<b>Headphone</b>		
Transducer	dynamic, open supra-aural	dynamic, open supra-aural
Frequency response	20 – 14,000 Hz	20 – 14,000 Hz
Impedance	300 Ω	300 Ω
Sound pressure level (SPL)	95 dB @ 1 kHz, 1mW, mono 86 dB @ 1 kHz, TV	95 dB @ 1 kHz, 1mW, mono 103 dB @ 1 kHz, TV
Distortion	< 1% at 95 dB SPL (350 – 3,000 Hz)	< 1% at 110 dB SPL (350 – 3,000 Hz)
Contact pressure	2.7 N	2.7 N
<b>Microphone</b>		
Type	BMD 46-413	BMD 46-413
Transducer principle	Dynamic microphone, noise-cancelling	Dynamic microphone, noise-cancelling
Frequency response	100 – 12,000 Hz	100 – 12,000 Hz
Output voltage	0.5 mV / Pa	0.5 mV / Pa
Impedance	200 Ω	200 Ω
Supply voltage	N/A	N/A
<b>General</b>		
Weight without cable	150 g/5.29 oz	150 g/5.29 oz
Operating temperature	-10 °C to +55 °C/ +14 °F to +131 °F	-10 °C to +55 °C/ +14 °F to +131 °F
Storage temperature	-55 °C to +70 °C/ -67 °F to +158 °F	-55 °C to +70 °C/ -67 °F to +158 °F
Connection cable	-	-
Length	-	-
Connectors	-	-
Remarks		Art. no. 1000297 (without EPOS Activegard®)

In control and present

# COMMAND 200

Give and receive commands with consistent call clarity and stay aware of your environment while multi-tasking. Meet the daily challenges of ATC and C3 situations with robust, lightweight headsets – either single or double sided – for all-day comfort and protection from acoustic injury.

- Consistent communication with EPOS Voice™ technology  
Voice enhancing technology with noise-cancelling microphone delivers clear voice transmission and reception for listeners
- Protect your hearing with EPOS ActiveGard®  
Guards against acoustic injury caused by sudden sound bursts on the line without risk of communication drop-out
- Multitask with two channel stereo application  
Enabling multi-channel communication when switching between air and land-based calls on SC 260 ATC/C3 AG
- All-day comfort and robust build  
Made from high-quality materials, the CircleFlex™ dual-hinge ear cup system and adjustable headband create a perfect fit
- Choose your wearing style  
With a flexible microphone boom arm worn on either the left or right





## COMMAND Headsets overview



SC 230  
ATC/C3 AG



SC 260  
ATC/C3 AG

Art. no.	1000292	1000294
<b>Headphone</b>		
Transducer	dynamic, open supra-aural	dynamic, open supra-aural
Frequency response	50 – 18,000 Hz	50 – 18,000 Hz
Impedance	200 Ω	200 Ω
Sound pressure level (SPL)	103 dB @ 1 kHz, 1 mW, 107 dB @ 1 kHz, 1 V	103 dB @ 1 kHz, 1 mW, 107 dB @ 1 kHz, 1 V
Distortion	< 1% at 102 dB SPL at 1 kHz	< 1% at 102 dB SPL at 1 kHz
Contact pressure	19 N	19 N
<b>Microphone</b>		
Type	Noise-cancelling	Noise-cancelling
Transducer principle	Electret microphone	Electret microphone
Frequency response	150 – 6,800 Hz	150 – 6,800 Hz
Output voltage	Sensitivity: -38dBV (+/-) 3dB	Sensitivity: -38dBV (+/-) 3dB
Impedance	2,200 Ω	2,200 Ω
Supply voltage	1-10 V DC	1-10 V DC
<b>General</b>		
Weight without cable	58 g/2.05 oz	86 g/3.04 oz
Operating temperature	-10 °C to +55 °C/ +14 °F to +131 °F	-10 °C to +55 °C/ +14 °F to +131 °F
Storage temperature	-55 °C to +70 °C/ -67° F to +158 °F	-55 °C to +70 °C/ -67° F to +158 °F
Connection cable	Straight cable, 2.6 mm with Mini-XLR plug	Straight cable, 2.6 mm with Mini-XLR plug
Length	1.0 m/3.28 ft	1.0 m/3.28 ft
Connectors	Mini-XLR	Mini-XLR*
Remarks	Art. no. 1000291 (without EPOS Activegard®)	Art. no. 1000293 (without EPOS Activegard®)

Take control

# COMMAND 27

Boost concentration in the control room with a comfortable, premium headset that delivers uncompromising communication and situational awareness. The noise-cancelling microphone reduces ambient noise to improve speech intelligibility for your listener. Meaning you can be heard even in noisy, dynamic working environments.

- Uncompromising communication with Voice Clarity  
Voice enhancing technology with noise-cancelling microphone delivers excellent voice transmission and reception for listeners
- Two channel stereo mode  
Makes it possible to use one channel for radio communications and one for telephone communications on dual sided headset
- Protect your hearing with ActiveGard®  
Guards against acoustic injury caused by sudden sound bursts on the line without risk of communication drop-out
- Stay aware of your environment on calls  
Enjoy single-sided listening with flip away ear cup on dual sided headset
- All-day comfort and robust build  
Superb wearing comfort with patented two-piece automatic headband and soft circumaural ear pads





## ATC Headsets overview



HME 27 ATC/C3 300 Ω    HMD 27 w. std. boom    HMD 27 ATC/C3 w. 5 ohm Mic    HMD 27 ATC/C3 5 ohm w/o AG    HMD 27 ATC/C3 w/o AG    HME 27 S ATC/C3

Art. no.	507276	507277	507278	508325	508326	508327
<b>Headphone</b>						
Transducer	Electret, closed supra-aural	dynamic, closed supra-aural	dynamic, closed supra-aural	dynamic, closed supra-aural	dynamic, closed supra-aural	Electret, closed supra-aural
Frequency response	8 - 18,000 Hz	8 - 18,000 Hz	8 - 18,000 Hz	8 - 18,000 Hz	8 - 18,000 Hz	8 - 18,000 Hz
Impedance	300 Ω	300 Ω	300 Ω	300 Ω	300 Ω	300 Ω
Sound pressure level (SPL)	100 ±3 dB, 1V, 1kHz 95 ±3 dB, 1mW, 1kHz	100 ±3 dB, 1V, 1kHz 95 ±3 dB, 1mW, 1kHz	100 ±3 dB, 1V, 1kHz 95 ±3 dB, 1mW, 1kHz	100 ±3 dB, 1V, 1kHz 95 ±3 dB, 1mW, 1kHz	100 ±3 dB, 1V, 1kHz 95 ±3 dB, 1mW, 1kHz	100 ±3 dB, 1V, 1kHz 95 ±3 dB, 1mW, 1kHz
Distortion	< 1 % at 100 dB SPL	< 1 % at 100 dB SPL	< 1 % at 100 dB SPL	< 1 % at 100 dB SPL	< 1 % at 100 dB SPL	< 1 % at 100 dB SPL
Contact pressure	3.3 N	3.3 N	3.3 N	3.3 N	3.3 N	3.3 N
<b>Microphone</b>						
Type	BKE 46	BMD 46-413	BMD 46-413	BMD 46-413	BMD 46-413	BKE 46
Transducer principle	Electret microphone, noise-cancelling	Dynamic microphone, noise-cancelling	Dynamic microphone, noise-cancelling	Dynamic microphone, noise-cancelling	Dynamic microphone, noise-cancelling	Electret microphone, noise-cancelling
Frequency response	100 - 6,000 Hz	100 - 12,000 Hz	100 - 12,000 Hz	100 - 12,000 Hz	100 - 12,000 Hz	100 - 6,000 Hz
Output voltage	adjustable from 17 - 100 mV/Pa	0.5 mV/Pa @ 1 kHz	0.12 mV/Pa @ 1 kHz	0.12 mV/Pa @ 1 kHz	0.5 mV/Pa @ 1 kHz	adjustable from 17 - 100 mV/Pa
Impedance	2.2 K Ω+	200 Ω	5 Ω	5 Ω	200 Ω	2.2 K Ω
Supply voltage	12 - 48 VDC	12 - 48 VDC	12 - 48 VDC	12 - 48 VDC	12 - 48 VDC	12 - 48 VDC
<b>General</b>						
Weight without cable	240 g / 8.47 oz	240 g / 8.47 oz	240 g / 8.47 oz	240 g / 8.47 oz	240 g / 8.47 oz	170 g / 6.00 oz
Operating temperature	-10 °C to +55 °C/ +14 °F to +131 °F	-10 °C to +55 °C/ +14 °F to +131 °F	-10 °C to +55 °C/ +14 °F to +131 °F	-10 °C to +55 °C/ +14 °F to +131 °F	-10 °C to +55 °C/ +14 °F to +131 °F	-10 °C to +55 °C/ +14 °F to +131 °F
Storage temperature	-55 °C to +70 °C/ -67 °F to +158 °F	-55 °C to +70 °C/ -67 °F to +158 °F	-55 °C to +70 °C/ -67 °F to +158 °F	-55 °C to +70 °C/ -67 °F to +158 °F	-55 °C to +70 °C/ -67 °F to +158 °F	-55 °C to +70 °C/ -67 °F to +158 °F
Connection cable	-	-	-	-	-	-
Length	-	-	-	-	-	-
Connectors	-	-	-	-	-	-



Stay focused

# COMMAND 110

When the pressure is on in control tower and C3 environments, choose a noise reducing headset with great call clarity to guarantee your performance. Closed ear cups provide excellent passive attenuation in particularly noisy spaces.

- Clear communication with Voice Clarity  
Voice enhancing technology with ultra noise-cancelling microphone for excellent voice transmission and reception on calls
- Stay focused with noise reduction  
Closed ear cups offer passive attenuation up to 40 dB
- Control volume easily  
With built in volume control on ear cup that can be disabled if necessary
- Choose your wearing style  
With a flexible microphone boom arm worn on either the left or right
- Dual communication sources  
Choose mono or stereo with simple switching between two communication sources





## COMMAND Headsets overview



HME 110 ATC



HME 110 C3

Art. no.	500679	507280
<b>Headphone</b>		
Transducer	dynamic, closed Circumaural	dynamic, closed Circumaural
Frequency response	45 - 15,000 Hz	45 - 15,000 Hz
Impedance	300 Ω stereo/ 150 Ω mono	300 Ω stereo/ 150 Ω mono
Sound pressure evel (SPL)	90 dB @ 1 kHz, 1 mW, mono 98 dB @ 1 kHz, 1 V	90 dB @ 1 kHz, 1 mW, mono 98 dB @ 1 kHz, 1 V
Distortion	< 1 % at 100 dB SPL	< 1 % at 100 dB SPL
Contact pressure	10 N	10 N
<b>Microphone</b>		
Type	MKE 45-1	MKE 45-1
Transducer principle	Electret microphone, noise-cancelling	Electret microphone, noise-cancelling
Frequency response	100 - 5,000 Hz	100 - 5,000 Hz
Output voltage	40 mV / Pa (+/-) 1 dB	40 mV / Pa (+/-) 1 dB
Impedance	150 Ω	150 Ω
Supply voltage	8-16 VDC	8-16 VDC
<b>General</b>		
Weight without cable	350 g/12.35 oz	350 g/12.35 oz
Operating temperature	-10 °C to +55 °C/ +14 °F to +131 °F	-10 °C to +55 °C/ +14 °F to +131 °F
Storage temperature	-55 °C to +70 °C/ -67 °F to +158 °F	-55 °C to +70 °C/ -67 °F to +158 °F
Connection cable	single-sided, round cable	single-sided, round cable
Length	1.5 m/4.92 ft	1.85 m/6.07 ft
Connectors	5.25 mm jack plug microphone 6.35 mm jack plug headset	open ended
Remarks		

# Productivity software



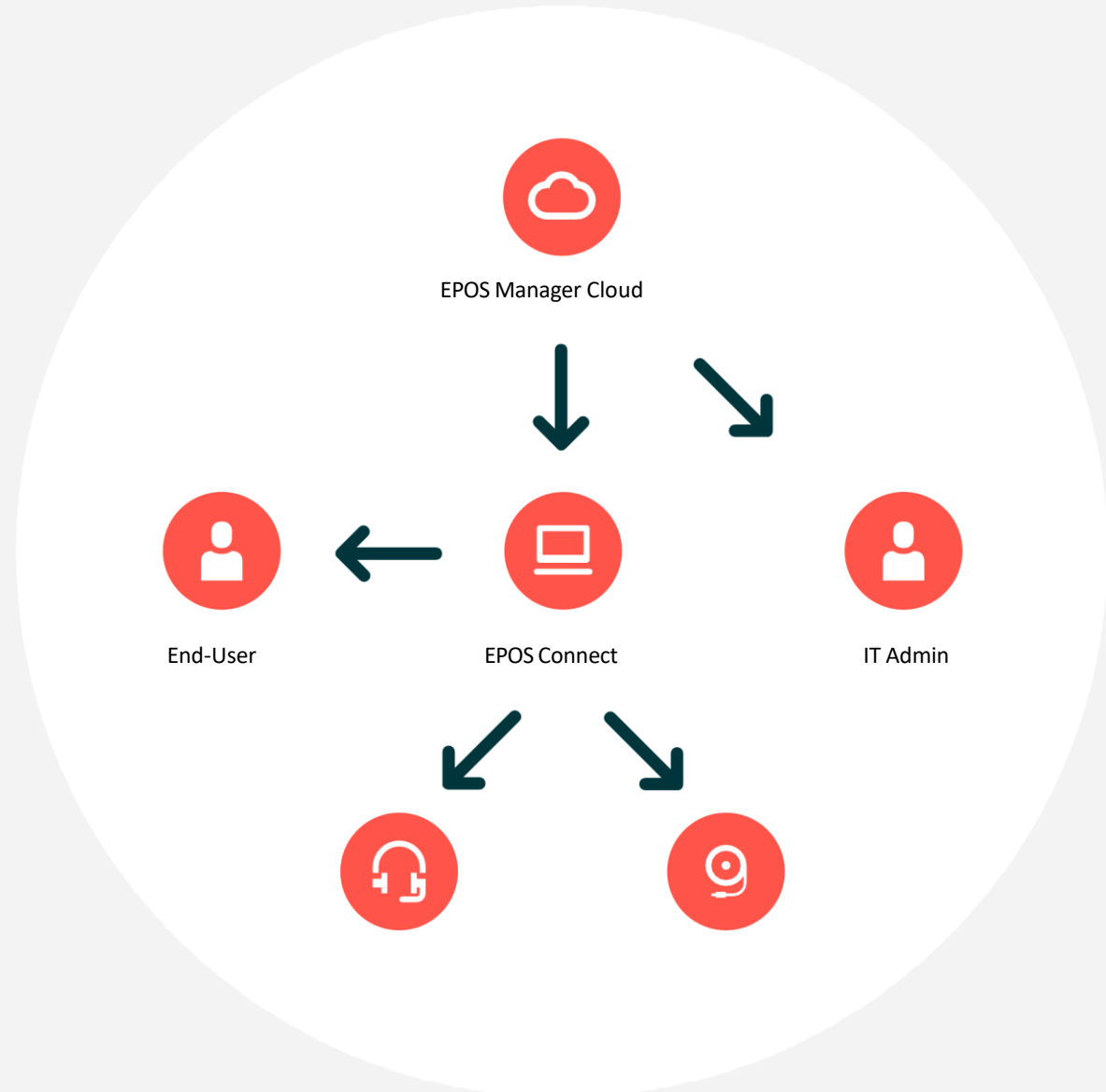
# Enhance Business Performance

EPOS Manager is a cloud-based IT Management solution to manage, update and configure settings for your EPOS audio devices.

## The solution

The solution consists of two parts:

- EPOS Manager – The IT administrator version hosted in Microsoft Azure
- EPOS Connect – the client application installed locally on each computer managing the end-user's headsets or speakerphones



# EPOS Manager

Optimize your business and boost employee performance with a free, flexible and secure tool that manages your audio devices and analyzes their use.

**Manage and update devices from anywhere**

Remotely deploy and configure audio devices and get the latest firmware updates across locations to minimize downtime.

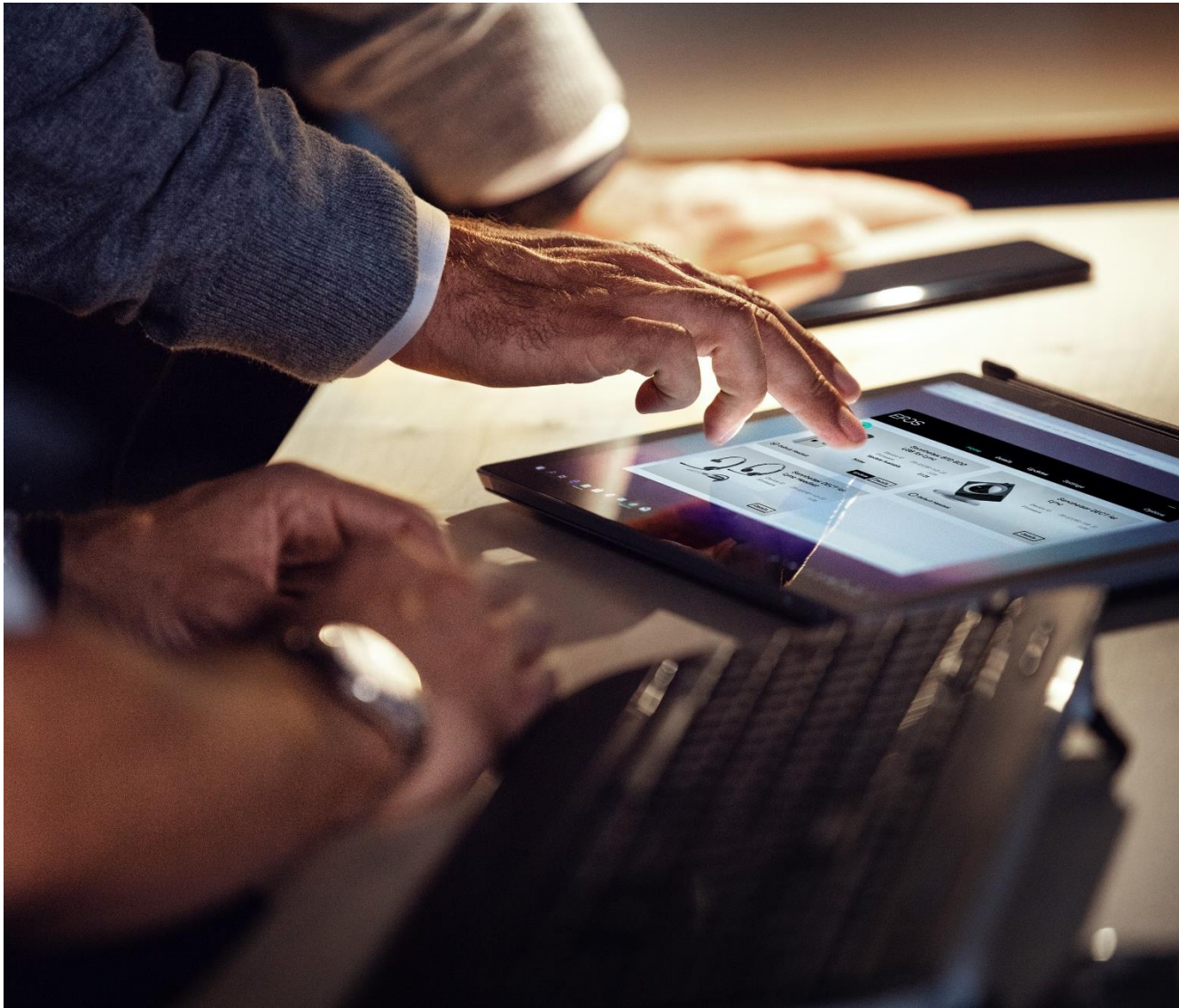
**Gain analysis and insight**

Extract reports on device mix and headset usage to gain insights into the way your company works and how it can be improved.

**Complimentary with EPOS audio solutions**

Choose between on-premises or cloud-based freeware with unlimited software updates.





# EPOS Connect

Update with the latest firmware and personalize your EPOS audio device settings to ensure flawless operation and maximum productivity. EPOS Connect works with Windows and VDI/thin clients

## The latest updates

Get the latest firmware updates to enhance your EPOS audio devices and ensure your performance at work

## Personalized audio experience

Wherever you work, personalize your device settings to suit your working situation and choose a default softphone and headset

## Control calls seamlessly

Connect your headset and softphone for full call control including; answer/end calls, adjust volume and mute

# EPOS

## Connect App

Take control of your sound environment wherever you work with the free EPOS Connect App – made to optimize your audio experience and boost focus. Enjoy a range of options to tailor your audio to your working style and tune into any task.

### Customize your headset

Wherever you work, personalize your device settings to suit your working situation

### Enhance your sound experience

Select your preferred acoustic mode and reduce background noise with adaptive ANC for a richer call experience

### Choose your settings

Set sidetone level, voice prompts and tones, change language, activate smart pause and set Amazon Alexa as your preferred virtual assistant

### Easy to use

Enjoy an intuitive and user-friendly app that makes it easy to get the most from your ADAPT 660 or MB 660 headset

### Freeware

Enable optimal functionality with a free download of the EPOS Connect app. Compatible with most iOS and Android systems



# Softphone compatibility

EPOS offers an extensive range of wired and wireless headset solutions and speakerphones that enable remote call control with the leading softphone brands and Unified Communications solutions.

We have developed different solutions to match the requirements from our partners.

## Plug-n-Play

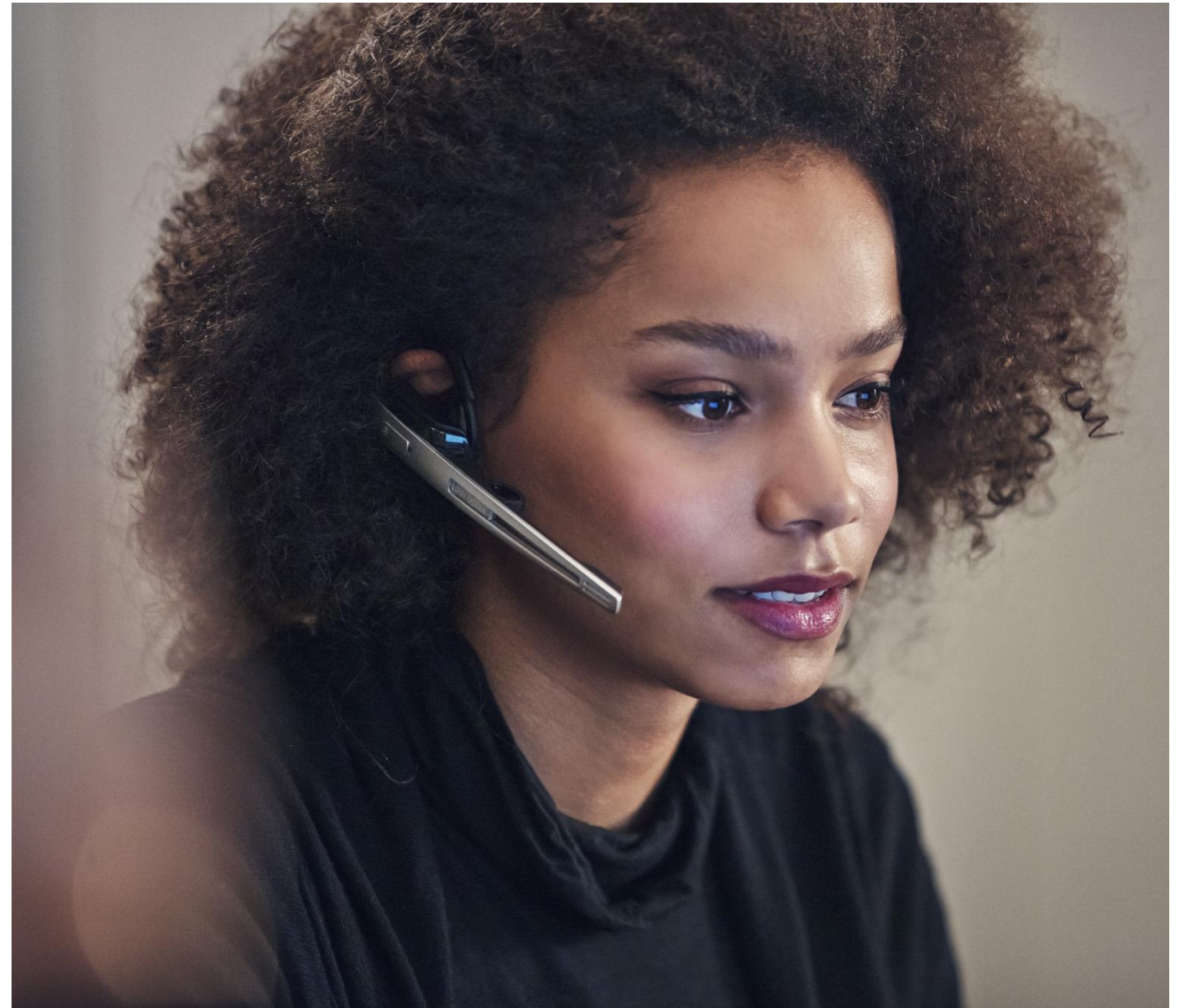
EPOS headsets and speakerphones work plug-n-play enabling full call control. No need for any additional installations – just plug in and talk!

## EPOS Connect

EPOS Connect ensures that EPOS headsets and speakerphones work seamlessly with various leading softphones and give you access to latest firmware updates and personalized settings.

## HeadSetup™ & Softphone plugins

HeadSetup™ or specific softphone plugins ensure that your EPOS headsets always work seamlessly with your chosen softphone platforms.







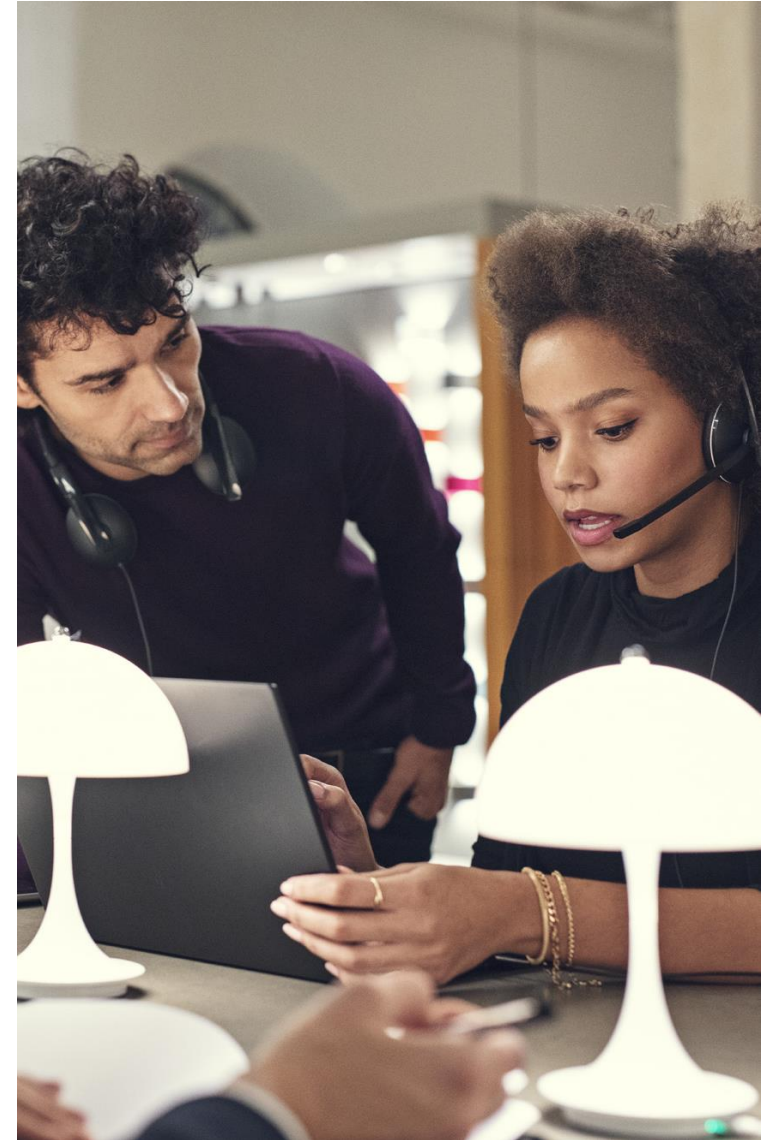
Partnerships

# Strategic Alliances

Our partnerships with other technology-driven companies and vendors have a common goal - to simplify your daily business. We work with strategic alliance partners to ensure that our products are easy to deploy and are fully compatible with all major Unified Communications platforms and desk phones.

Our products are thoroughly tested with our partners for call features compatibility and optimal sound experience. We are your one-stop audio solution provider for all your business communication needs.

# Partners





# Working with EPOS

Within EPOS' Selective Distribution System (SDS) you'll be part of a premium network for sales and distribution. Built to fulfill the needs of a global market. This system:

This system:

- Provides a professional and premium image to the end-user
- Builds and protects customer confidence through a certified network
- Allows authorized EPOS Partners to sell a specified product selection

# SDS qualification

Our partnership builds on a strong foundation of 'give & take'.

Based on the business type of the partner, we have specified the following criteria:.

For wholesale and resale partners:

- Business location requirements
- Product presentation
- Staff qualifications
- Service

For wholesale and resale partners:

- Web shop requirements
- Product presentation
- Staff requirements





# Partner Portal

As an authorized EPOS partner, you can:

Get the best value and partner experience through digital sales tools and marketing support

Sell EPOS easily with expertise through training resources and learning content

Save time with a self service portal that helps you focus on your customers

# Access great benefits anytime, anywhere:

[Deal Registration](#), where you can protect your deals, get sales support and grow your business.

[Trial Request](#), where you can get product trials for your customers to experience EPOS audio firsthand.

[Brand Portal](#), where you can download product sheets, sales and marketing assets, images and campaign tools.

[Service and Support](#), where you can request support and get help with warranty returns and access to step-by-step guides and videos.

[Learning resources](#), where you can learn about the EPOS brand, products, industry and technology trends.

[Latest News & Highlights](#), where you can read about monthly news and special announcements on product introductions, PR, trade events, marketing campaign toolboxes and much more.



# Sales & marketing tools

## Marketing tool-box

Access to the Partner Portal, Brandzone marketing material and marketing co-branding opportunities.

## Experience EPOS

Participation in demo & trial programs of our latest and greatest products.

## Business Opportunities

Access to leads generated by EPOS sales organization & related marketing activities.

# Service & support

Complement your technical, product and after- sales services with EPOS support offerings.





EPOS

Global support

# On a global, regional and local level

Global reach

On global, regional and local level EPOS | Sennheiser provides outstanding support across all sales channels and channel partners.

We're at your service

Our team is ready to personally take your call during office hours. Alternatively you can receive email support.

Our comprehensive online support portal offers the solution to most queries – This is available in English, German and French.

Warranty

# 2 years full warranty on all devices

Our Warranty Program is designed to keep your business running smoothly and minimize downtime.

Simply contact your local dealer or support to help you through a replacement process – regardless of where the product was purchased.

Knowledge base

# Online support

## The answer to most questions

Our Support Portal contains more than 600 help tools, such as quick guides, manuals, how-to videos, articles and more. We are also available directly via email or phone for a personal quick response.



Compatibility guide

# Online compatibility guide

Find the right headset easily Looking for a business headset for a particular phone, device or platform?

Use our online Compatibility Guide to find the choices available to you and to learn about the different headset features.



Audio solutions

# EPOS Technologies

Through advances in Artificial Intelligence, Sound Experience and Microphone Performance EPOS has created unrivalled audio solutions that boost the performance of the modern professional. We call these technologies EPOS AI™, EPOS Sound™ and EPOS Voice™.



# EPOS AI™

## Creates an optimized audio experience

Through our commitment to exploring the Power of Audio we have developed an optimized audio experience that pushes your communication further and boosts your ability to succeed. With our user in mind, we implemented EPOS AI™ - a machine learning system embedded in EPOS audio devices that processes audio and takes decisions independently. By interacting with advanced beamforming and noise reduction algorithms, this system enables the device to automatically adapt to your speech while studying your sound environment. The technology within EPOS AI™ then successfully reduces the ambient sounds in your environment, thus, transmitting your speech loud and clear to your listener – where it matters most.

We aim to stay at the forefront of what is technically possible. With the ADAPT 660 we have launched the first edge AI based headset in the entire UC space, thus laying the groundwork to be pioneers within audio technology.



EPOS

# EPOS Sound™

## Sound as if you were right there

EPOS Sound™ makes the most out of your premium audio device by delivering a natural listening experience. Through continuous monitoring of ambient sound and varying noise levels, our technology helps you concentrate while taking care of your hearing: creating an augmented and immersive audio experience that sounds as if you are speaking to someone face-to-face or are right there in the same environment. No matter where you are.

What's more, you can listen to your teammates or keep an ear out for announcements without removing your headset. For more focus, block out background noise with ease and enjoy the benefits of EPOS Sound™ – while watching your performance and energy levels rise.



# EPOS Voice™

## Be understood in any environment

EPOS Voice™ improves your speech intelligibility and provides for a better conversation by creating an acoustic lens to focus on your speech. Through removing remaining noise disturbances, it ensures a more natural reproduction of the human voice. EPOS Voice™, furthermore, recognizes your environment in order to eliminate unpleasant background noise to clarify your sound picture.

Making sure you can be heard no matter where you are – for the ultimate audio experience. With optimal control of noise levels, this technology allows for an effortless use of your digital voice assistants anytime, anywhere.





# Customer cases





# Customer cases

Discover solutions that work. For police, air traffic control, scientists, bankers, and you [here](#):



EPOS

THE POWER OF AUDIO