



VTX SERIES

SYSTEM SOLUTIONS



VTX SERIES

SYSTEM SOLUTIONS



VTX A-SERIES

SYSTEM SOLUTIONS



VTX A6

VTX A8

VTX A12

VTX A-SERIES

SYSTEM SOLUTIONS

| New A-Series Industrial Design:

- Full-face grill
- No exposed plastic parts
- IP55 rated as standard
- Integrated auto-locking rigging system
- Easy to service
- Easy grill and transducer removal
- Options for custom colors



VTX A-SERIES

SYSTEM SOLUTIONS

Common System Components

- Identical rigging systems
- Same acoustic design principles
- Uniform accessories
- Common voicing
- Same software

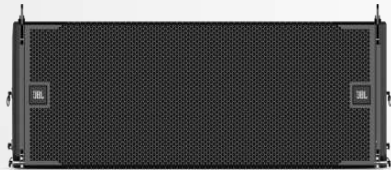


VTX A-SERIES

SYSTEM SOLUTIONS



A6



-12 dB from A12

2-way passive

67 Hz – 20 kHz (-10 dB)

110° horizontal coverage

LF: (2) 6.5-inch | HF: (1) 3-inch

190 mm x 536 mm x 301 mm

7.5 in x 21.1 in x 11.8 in

18.4 kg (40.3 lbs)

A8



-6 dB from A12

3-way design (2 amplifier channels)

50 Hz – 19 kHz (-10 dB)

110° horizontal coverage

LF: (2) 8-inch | MF: (4) 3.5-inch | HF: (2) 2-inch

227 mm x 771 mm x 365 mm

8.9 in x 29.9 in x 14.7 in

29.5 kg (65 lbs)

A12



146 dB max SPL @ 1m

3-way design (4 amplifier channels)

46 Hz – 19 kHz (-10 dB)

90° (A12) or 120° (A12W) horizontal coverage

LF: (2) 12-inch | MF: (4) 5.5-inch | HF: (3) 2-inch

330.2 mm x 1.118 mm x 495.3 mm

13 in x 44 in x 19.5 in

60.8 kg (134 lbs)



INSIDE THE INNOVATION

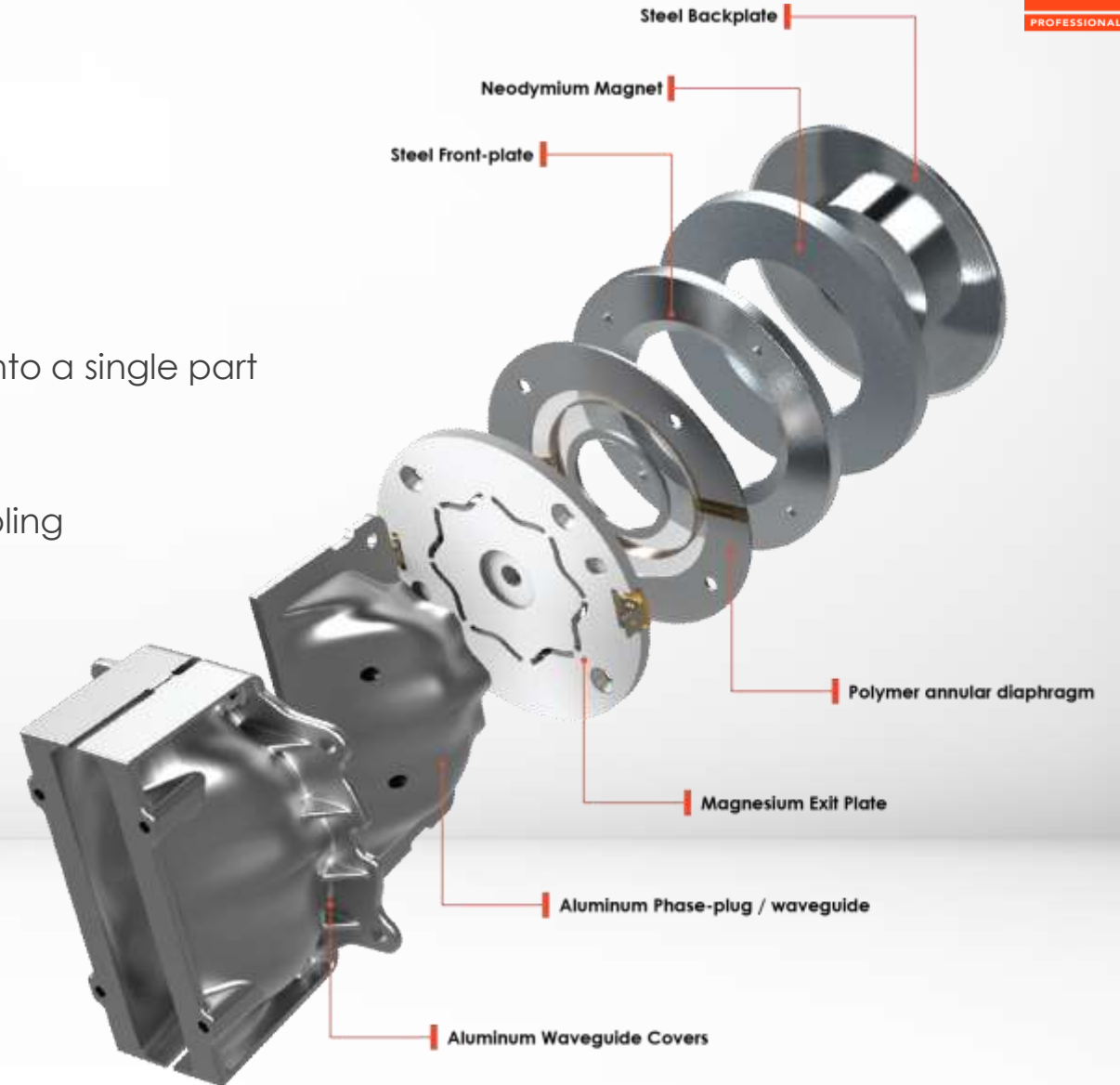
A-Series Transducers:

- All custom made JBL transducers
- All new neodymium MID and LF woofers
- Same HF Driver in VTX A12 and A8
- Same HF Design in VTX A6



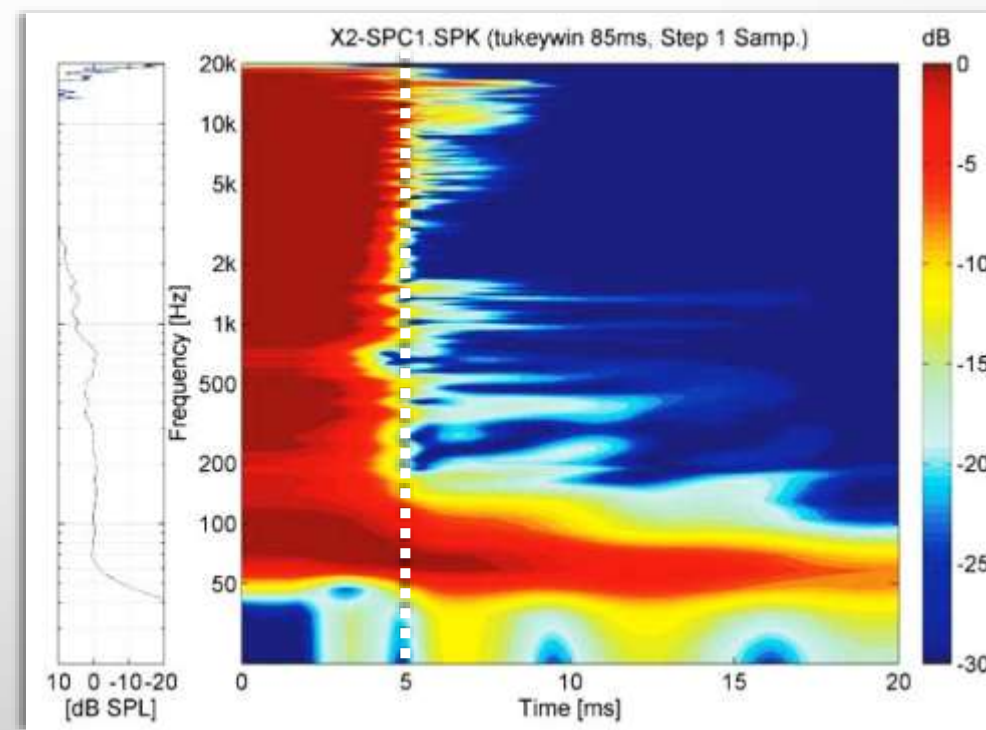
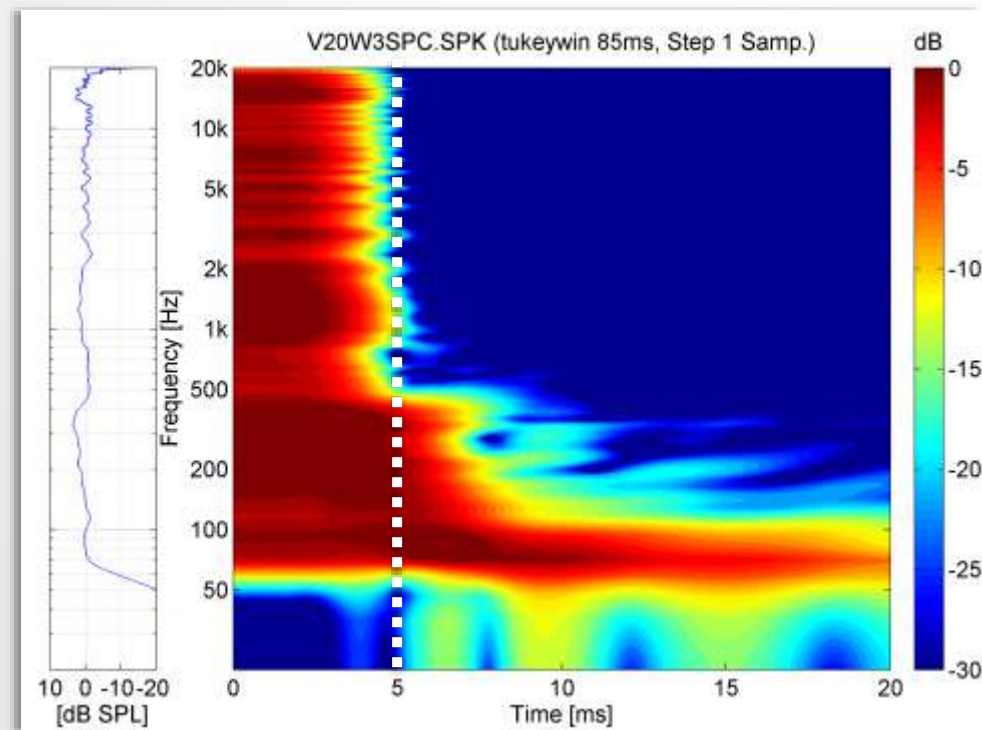
A-Series Compression Driver:

- Biggest innovation in A-Series products
- Combines the diaphragm, phasing-plug and waveguide into a single part
- Polymer annular V-Shaped diaphragm
- Meandering Flower shaped exit for wider diaphragm sampling
- Extremely short, compact and lightweight
- Precise directivity control



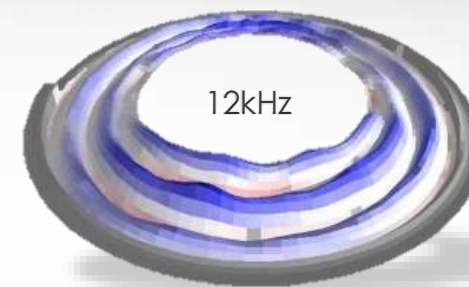
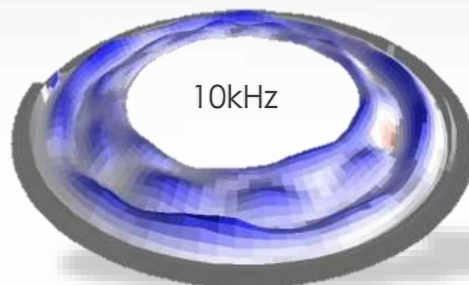
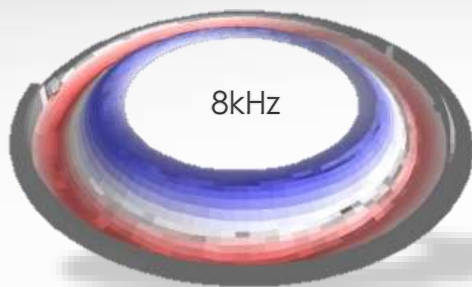
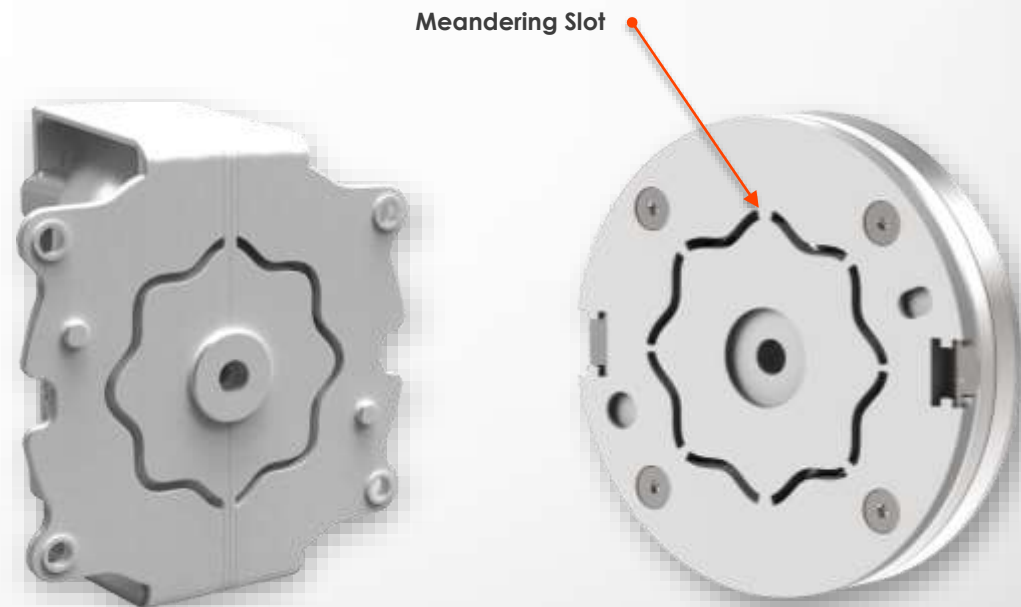
Diaphragm Benefits:

- Non-metallic diaphragm improves time-domain response
- Reduced decay time and HF ringing



Meandering Shaped Exit:

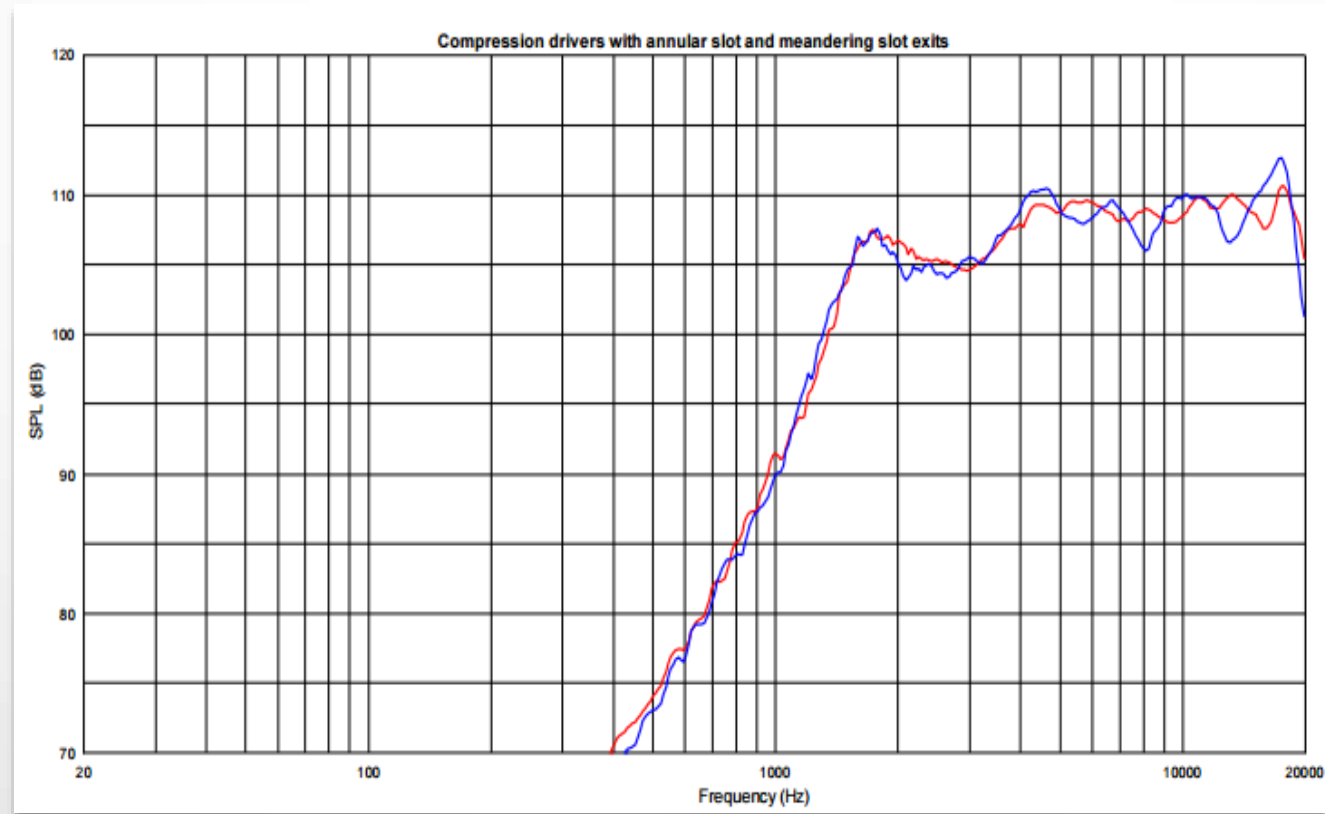
- Each frequency resonates differently on the diaphragm
- Shape allows us to spatially sample the entire diaphragm
- A ring exit would mask some of the more efficient areas



VTX A-Series Exit



Meandering Slot



Traditional Exit



Single Annular Exit

A-Series Compression Driver:

- Common technology across all A-Series products
- Same diaphragm material
- Matching voicing across all products



JBL 2423K | A8 (2), A12 (3)

- Exit: 100 mm (4 in)
- Range: 1.7 kHz – 20 kHz
- Max SPL: High



JBL 2433J | A6 (1)

- Exit: 170 mm (6.7 in)
- Range: 800 Hz – 20 kHz
- Max SPL: Medium

A-Series Mid Woofers:

- Purpose built mid woofers for A8 and A12
- Lightweight neo magnets
- Low distortion design



JBL 2423K | A8 (4)

- 3.5" woofer
- Single 1.5" Voice-Coil



JBL 2165H | A12 (4)

- Differential Drive 5.5" woofer
- Dual 2.5" Voice-Coil

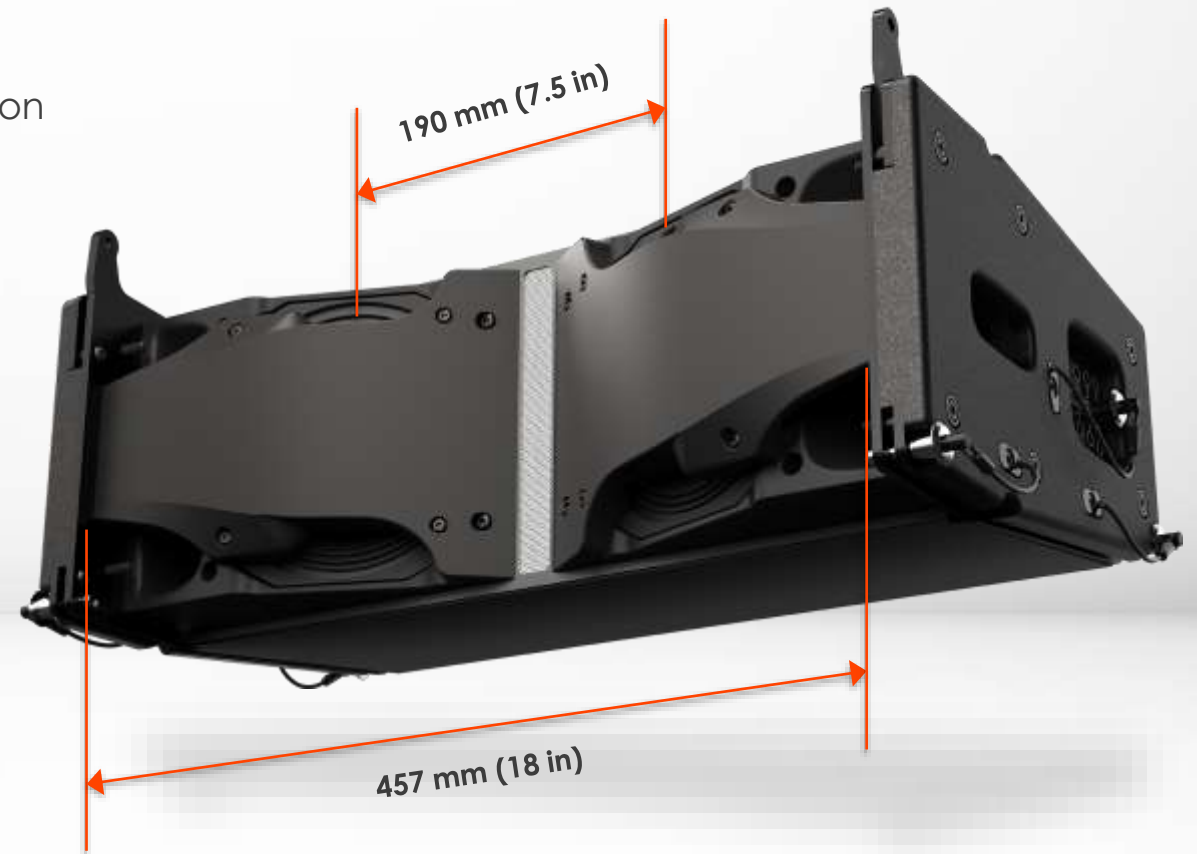
RBI Technology

- Integrates all components onto a single horn
- Reduces overall cabinet size
- Increased radiating area with 4 (A8) OR 8 (A12) exits per driver
- Reduced 3rd harmonic distortion compared to previous designs



RBI Technology

- Improves directivity by controlling woofer spacing
- Horn continues in front of the woofers to reduce diffraction effects
- Allows for a larger HF horn



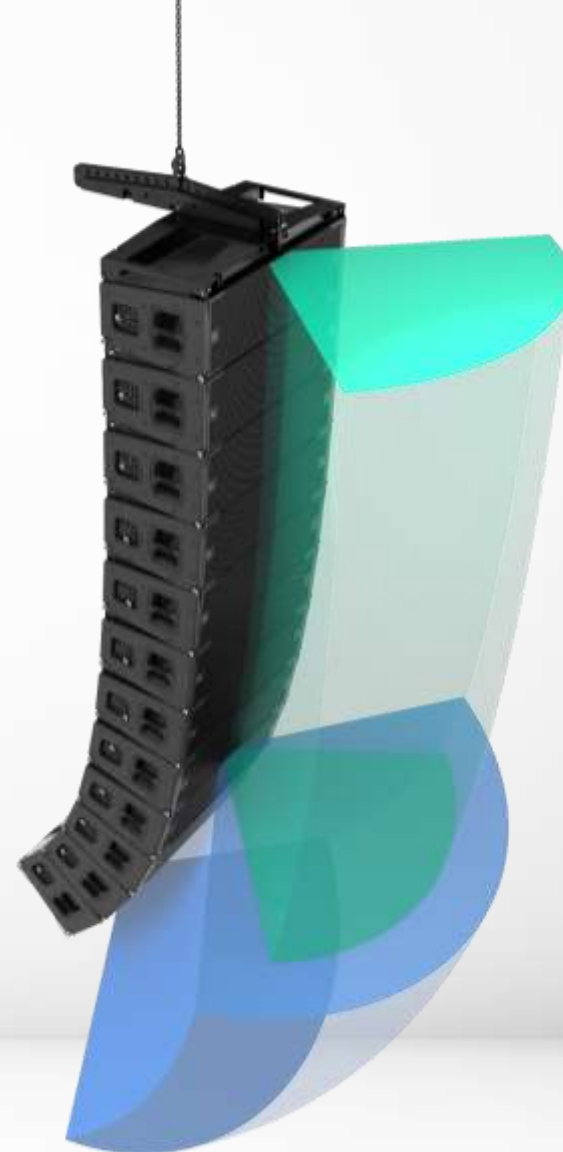
RBI Technology

- Uniform technology cross all A-Series models
- RBI creates the horizontal coverage opening



VTX A12 and A12W Mixed Arrays

- Same look as the main array
- Widens coverage where used
- Same acoustic design for proper summation
- Same LF performance for extending the length and control
- No down-fill adapter needed



A12



A12W

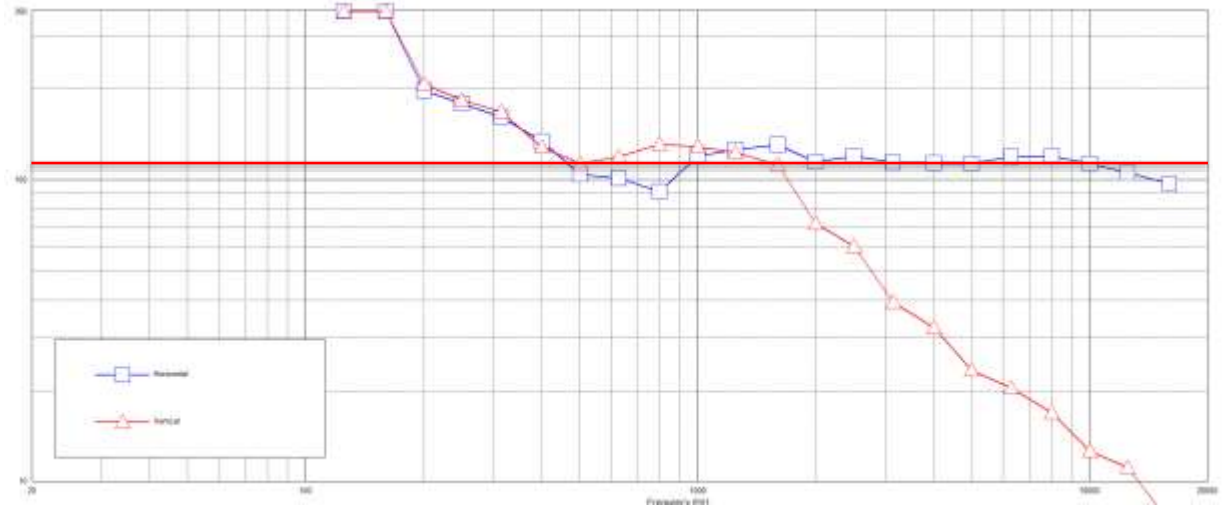


VTX A6

110-degree Horizontal Coverage

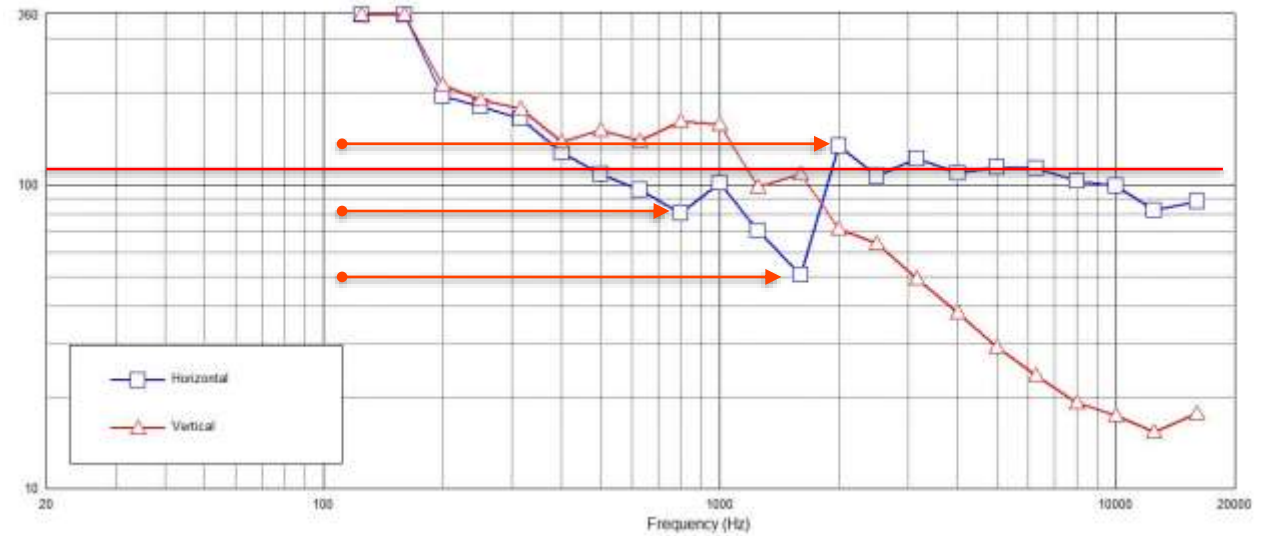


Beamwidth



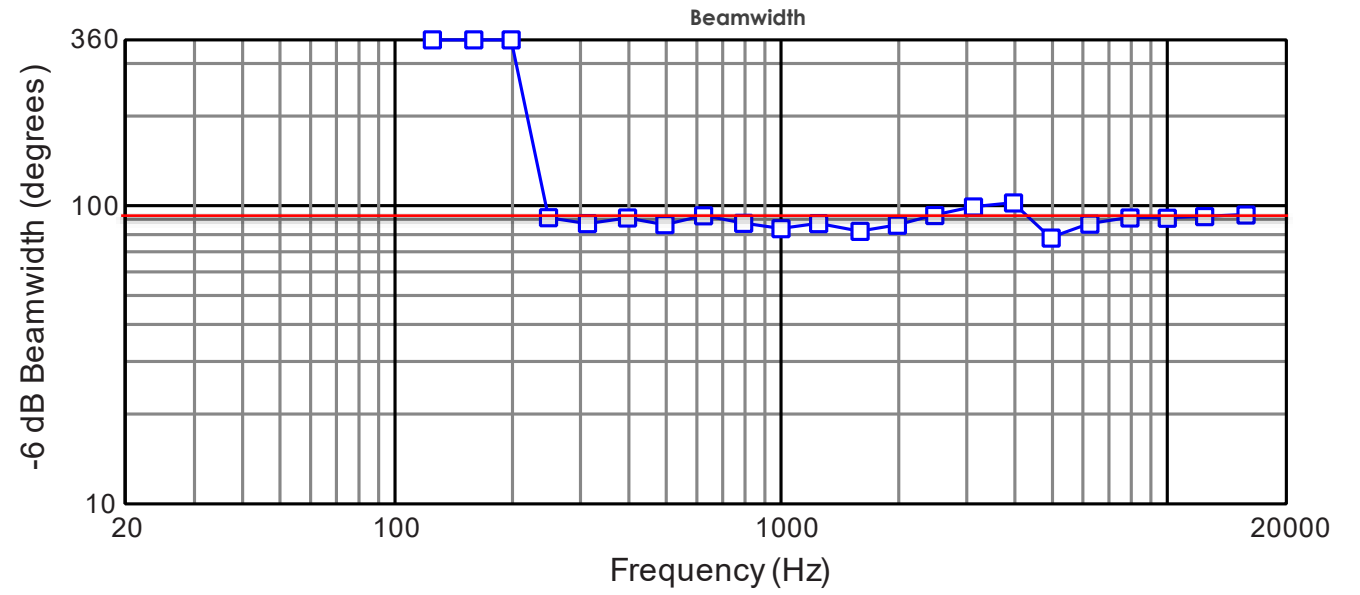
Competition

110-degree Horizontal Coverage



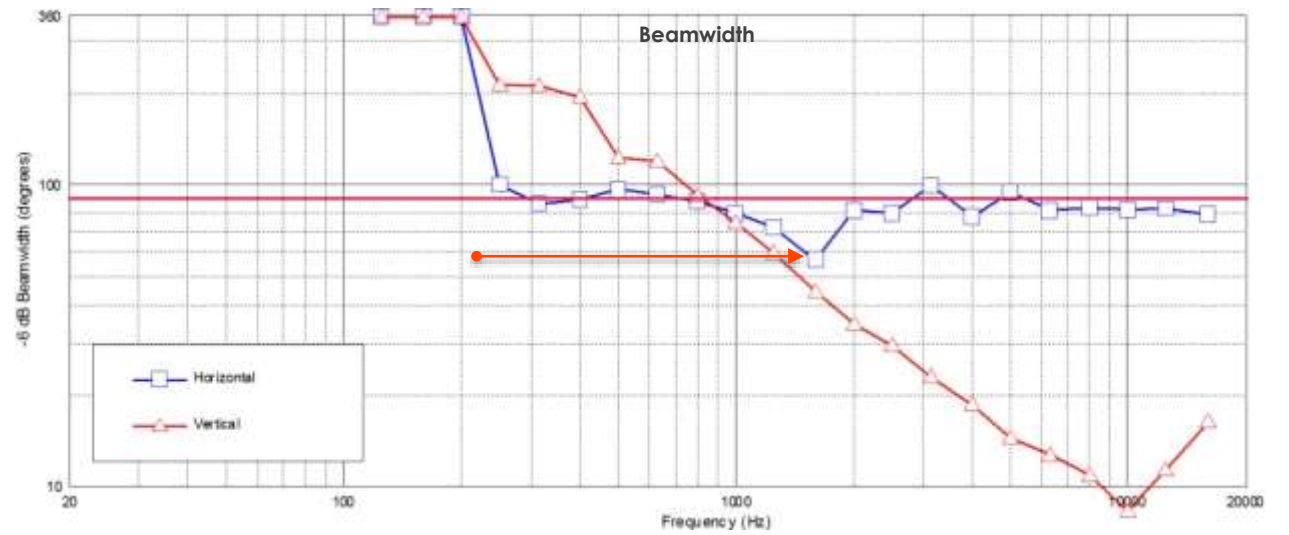
VTX A12

90-degree Horizontal Coverage



Competition

90-degree Horizontal Coverage



Differential Drive Woofer Design:

- Dual voice coil, dual gap
- Exclusive to JBL, first patented in 1995
- Heat sinks integrated into the cast aluminum frame
- Dramatically reduces weight
- Higher power handling, lower distortion
- Improved linearity at extremes





JBL 2423K | A6 (2)

- 6.5" woofer
- Dual 2.5" Voice-Coil



JBL 258J | A8 (2)

- 8" woofer
- Dual 2.5" Voice-Coil



JBL 2264H | A12 (2)

- 12" woofer
- Dual 3" Voice-Coil

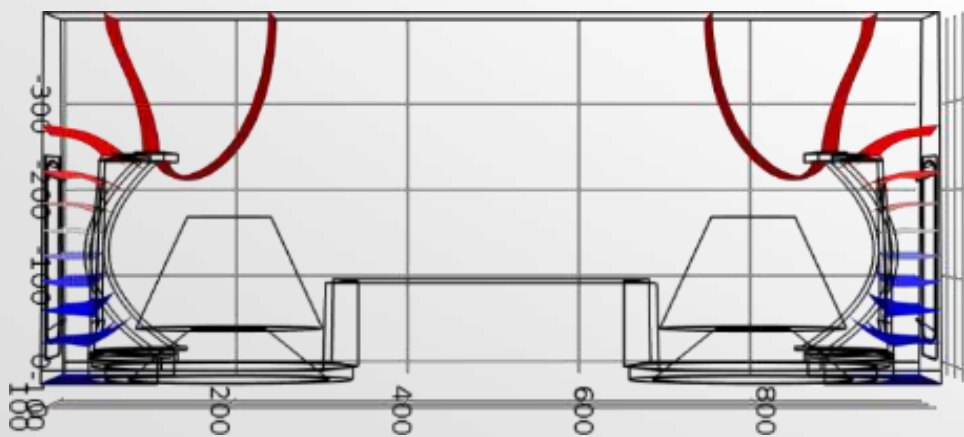
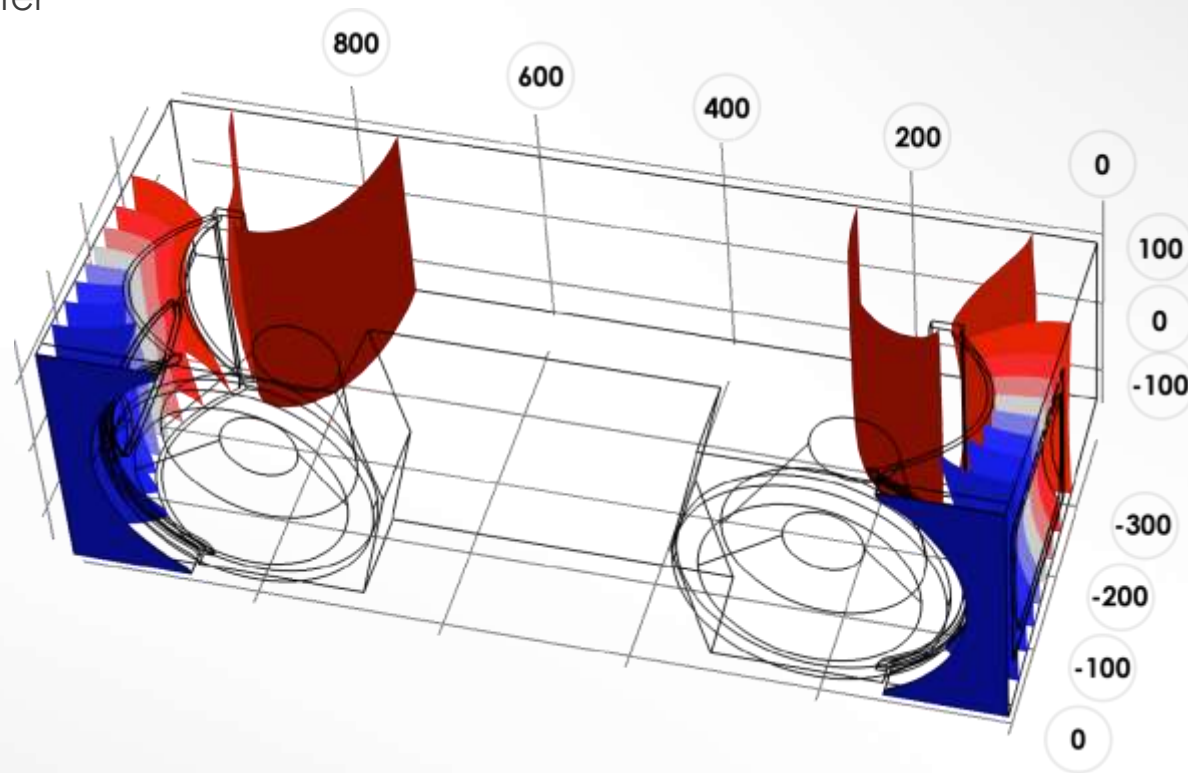
■ New LF Port design:

- Flared port design = increased air flow with minimal diameter
- Low velocity areas at the exit of the port
- High velocity areas at the center of the port
- Silent operation



LF Port design:

- Flared port design = increased air flow with minimal diameter
- Low velocity areas at the exit of the port
- High velocity areas at the center of the port
- Silent operation



VTX SERIES | A6



WIRING & AMPLIFICATION



Amplification

- System solution with Crown iTech HD amplifiers
- Support for all models
- Amplifiers sold as individuals or in VRacks



VTX A6 Connectivity

- Neutrik STXX series speakON NL4 connectors
- Channel selection switch
- Dual connectors for daisy-chaining

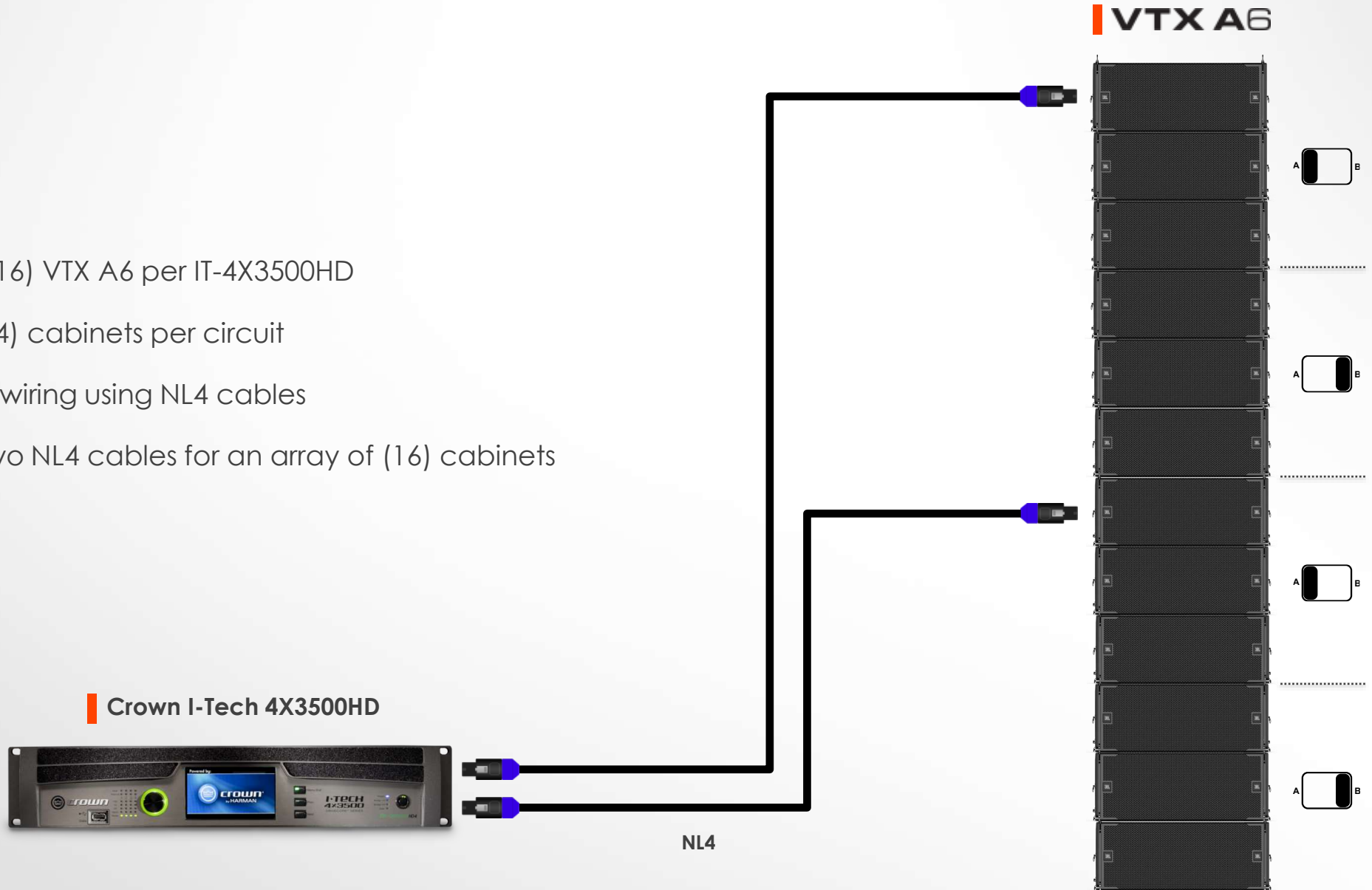


Channel Selection Switch

VTX SERIES | A6



- Up to (16) VTX A6 per IT-4X3500HD
- Up to (4) cabinets per circuit
- Simple wiring using NL4 cables
- Only two NL4 cables for an array of (16) cabinets



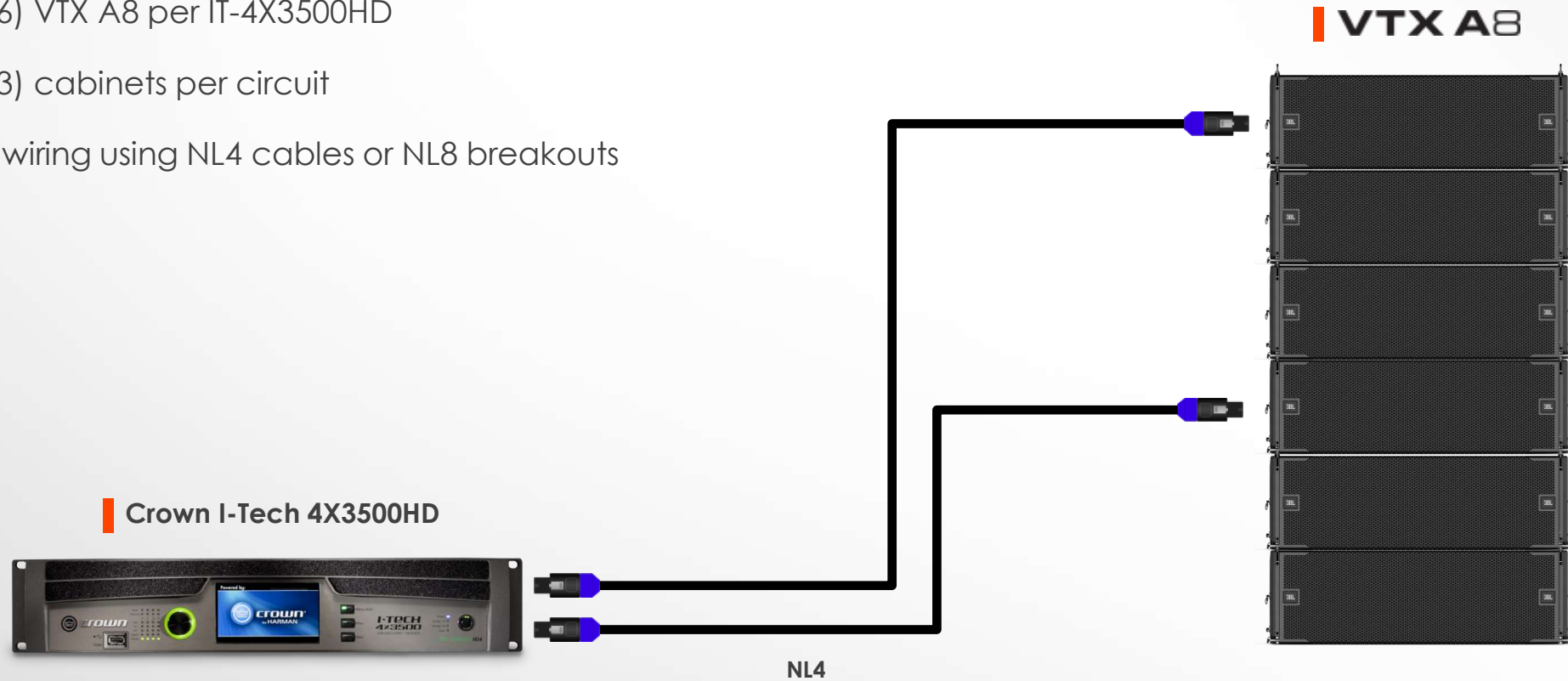
Crown I-Tech 4X3500HD

NL4

VTX SERIES | A8



- Up to (6) VTX A8 per IT-4X3500HD
- Up to (3) cabinets per circuit
- Simple wiring using NL4 cables or NL8 breakouts

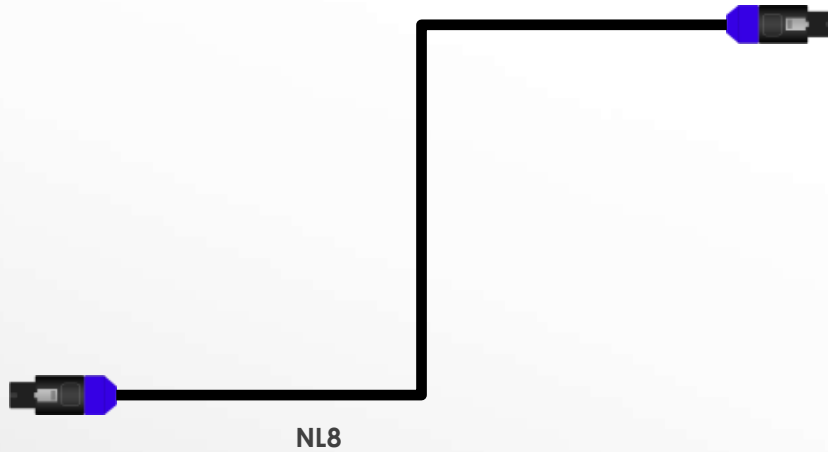


VTX SERIES | A12

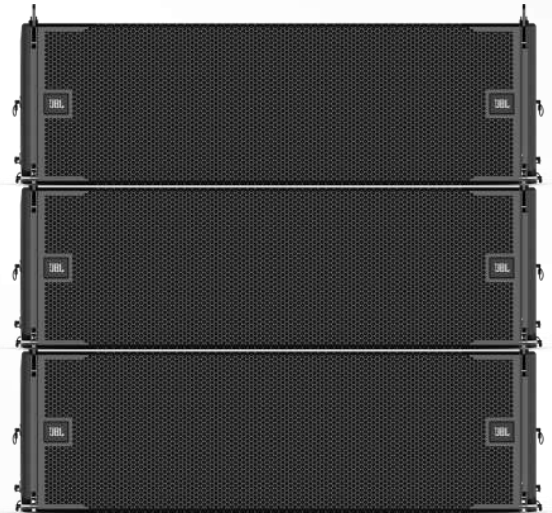


- Up to (3) VTX A12 per IT-4X3500HD
- Up to (3) cabinets per circuit
- Simple wiring using NL8 cables

Crown I-Tech 4X3500HD



VTX A12



■ Touring Rack Solution

- Suspendable light-weight racks
- 3 x amplifiers per rack for ideal power balance
- Built-in Ethernet distribution
- Worldwide standard for consistency



■ **VRack12000HD**

3 x I-T12000HD



■ **VRack4x3500HD**

3 x I-4x3500HD





SUSPENSION SYSTEM

VTX A-Series Rigging System

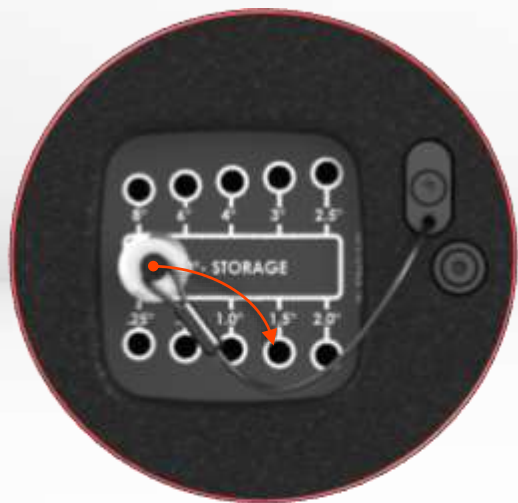
- Common across all A-Series products
- Auto-locking angle mechanism
- High-resolution angles (0.25° or 0.5 °)
- Quick, easy, safe
- Support for up to (24) cabinets





Simple Deployment Steps

1. Attach array frame
2. Select angles
3. Lift system
4. Continue with next stack.....

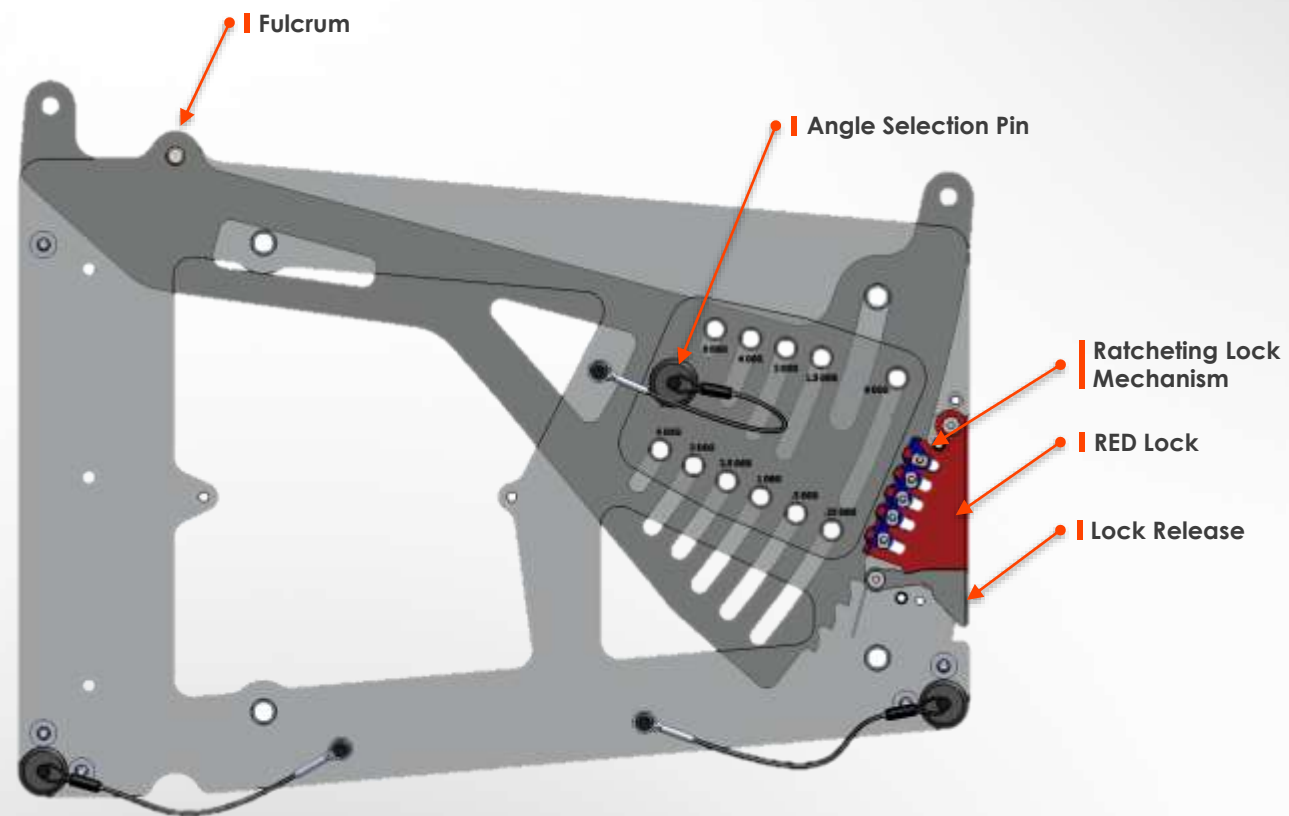


Angle Selection



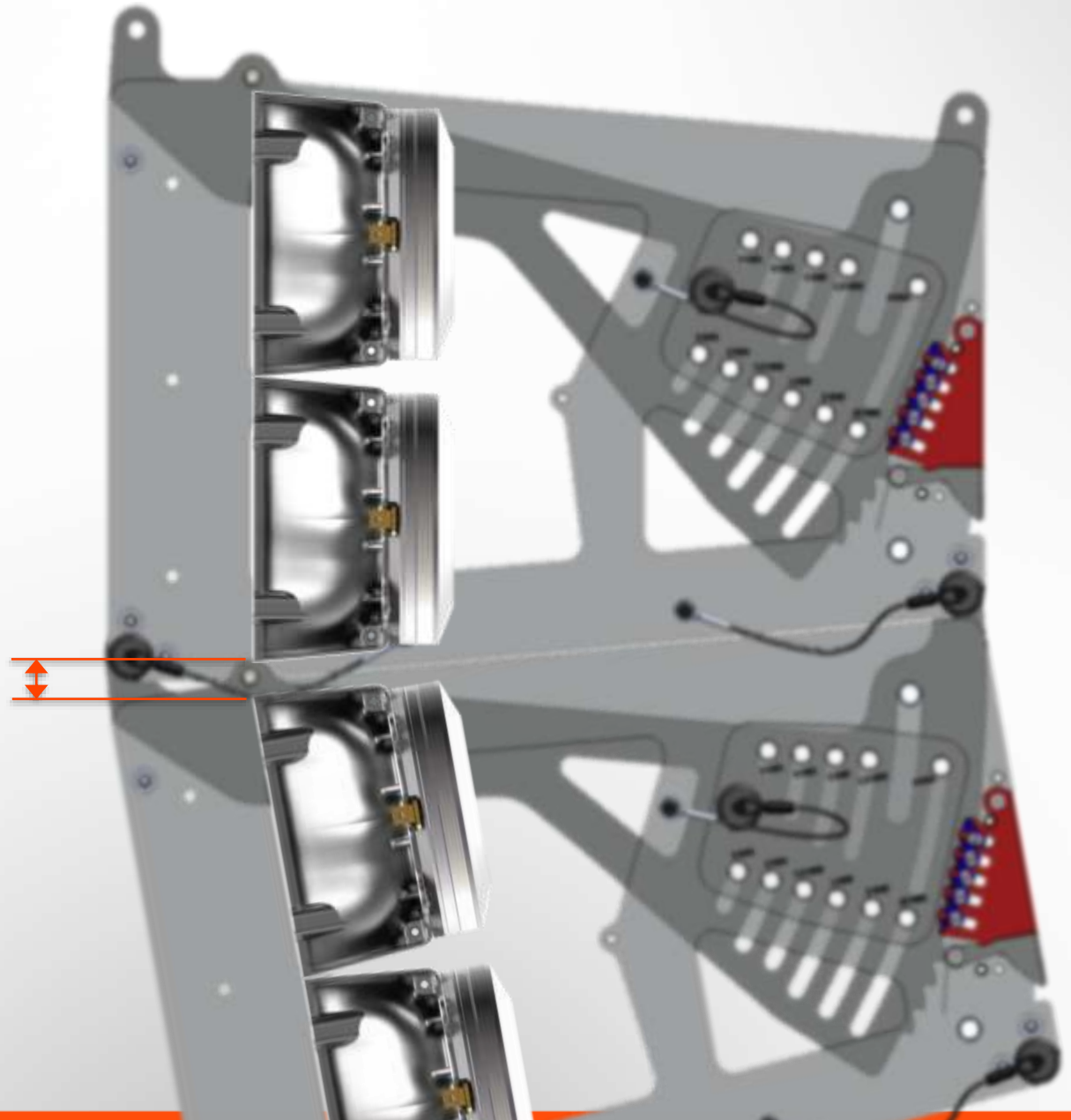
A-Series Rigging System

- Auto locking mechanism
- Simple 3-part assembly
- Single hinge point for better accuracy
- Light-weight
- Entire assembly can be replaced easily



VTX A-Series Rigging System

- HF exits align on the fulcrum of the rigging
- Minimizes spacing between HF exits



SUBWOOFERS

JBL

VTX B-SERIES

SYSTEM SOLUTIONS



VTX B18



VTX B28



VTX B15

VTX A-SERIES

SYSTEM SOLUTIONS



VTX B15



35 Hz – 95 Hz (-10 dB)

132 dB max SPL @ 1m

1300 W Continuous (IEC/100h)

8-ohms

SUB: (1) 15-inch 2285H

446 mm x 536 mm x 586 mm

18.3 in x 21.1 in x 23.1 in

41.5 kg (91.5 lbs)

VTX B18



28Hz – 80Hz (-10dB)

135dB MAX SPL

1300 W Continuous (IEC/100h)

8-ohms

SUB: (1) 18-inch 2288H

552 mm x 761 mm x 737 mm

21.7 in x 29.9 in x 29 in

67.5 kg (149 lbs)

VTX B28



25 Hz - 80 Hz (-10dB)

141dB MAX SPL

2600 W Continuous (IEC/100h)

4-ohms

SUB: (1) 18-inch 2288H-M

508 mm x 1324 mm x 750 mm

20 in x 52.1 in x 29.5 in

87 kg (191.8 lbs)

VTX SERIES | B15G

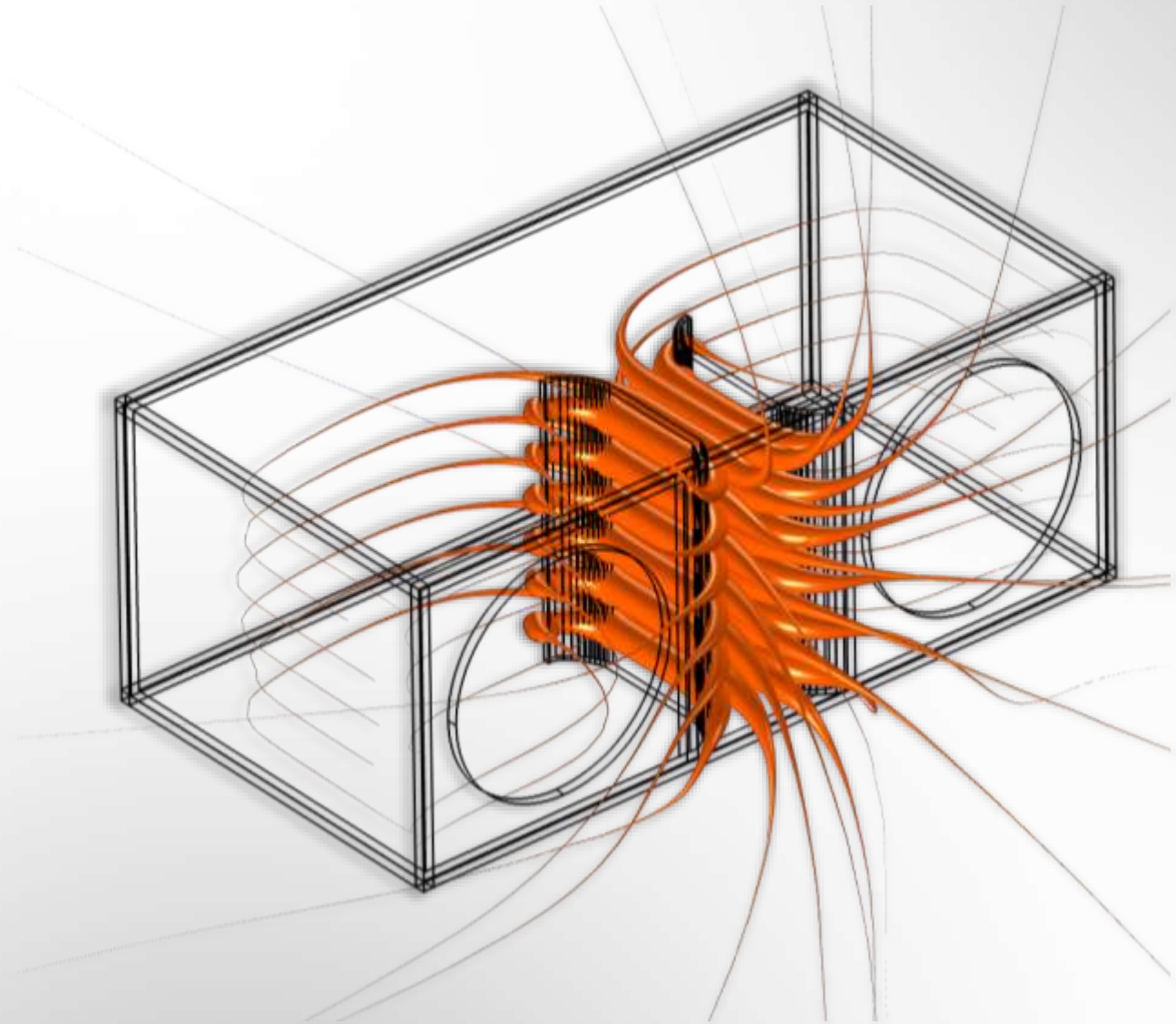


- **G** = Ground only
- Same specifications as B15
- No rigging hardware
- Installation friendly
- (16) M10 points
- Compatible with B15 accessories
- Lighter weight: 33.5 kg (74 lbs) (-20%)
- Lower cost (-30%)



Slip Stream Double Flared Port

- Increases efficiency at port tuning
- Reduces noise caused by turbulence
- Maximizes total internal cabinet volume
- Improves airflow by eliminating turbulent edges and corners
- Lowers velocity at the port exit to eliminate grill interference



Slip Stream Double Flared Port

- Common across all models



VTX B15



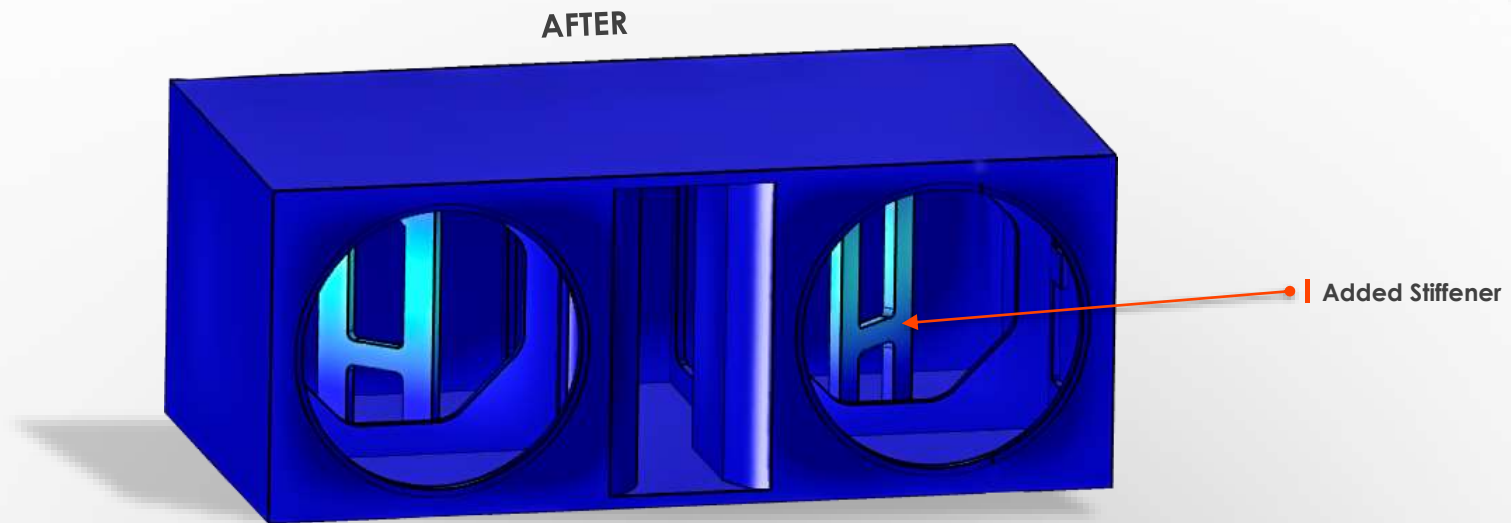
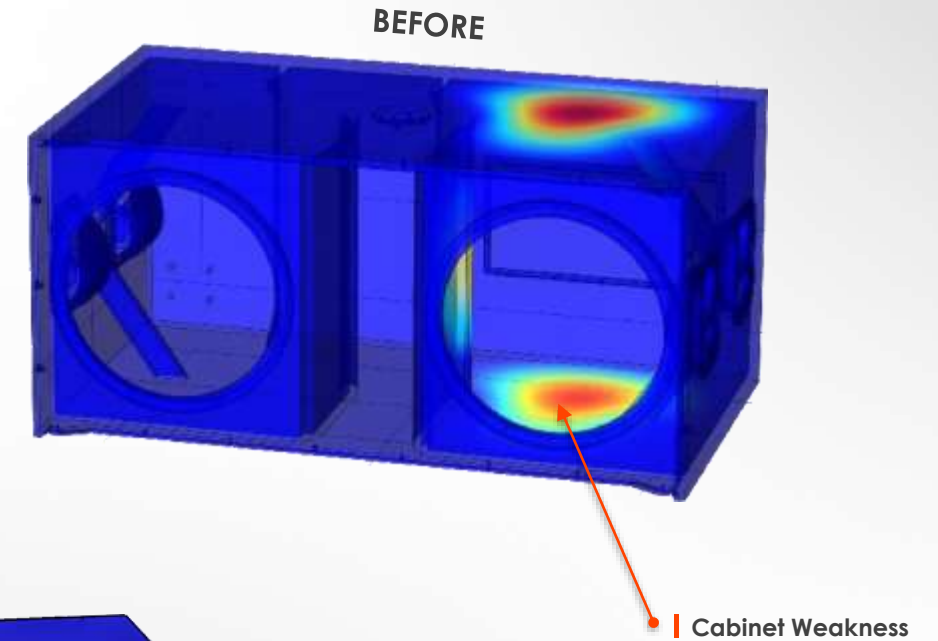
VTX B18



VTX B28

Cabinet resonance and vibration analysis:

- Isolates problematic areas to improve bracing
- Reduces material (wood) to the minimum
- Eliminates losses to improve efficiency
- Saves weight and improves performance



B-Series Woofers:

- Dual NEO magnet arrangement
- Dual 4-inch voice-coil for low power compression
- Carbon-fiber infused cone
- Industry leading X-Max performance



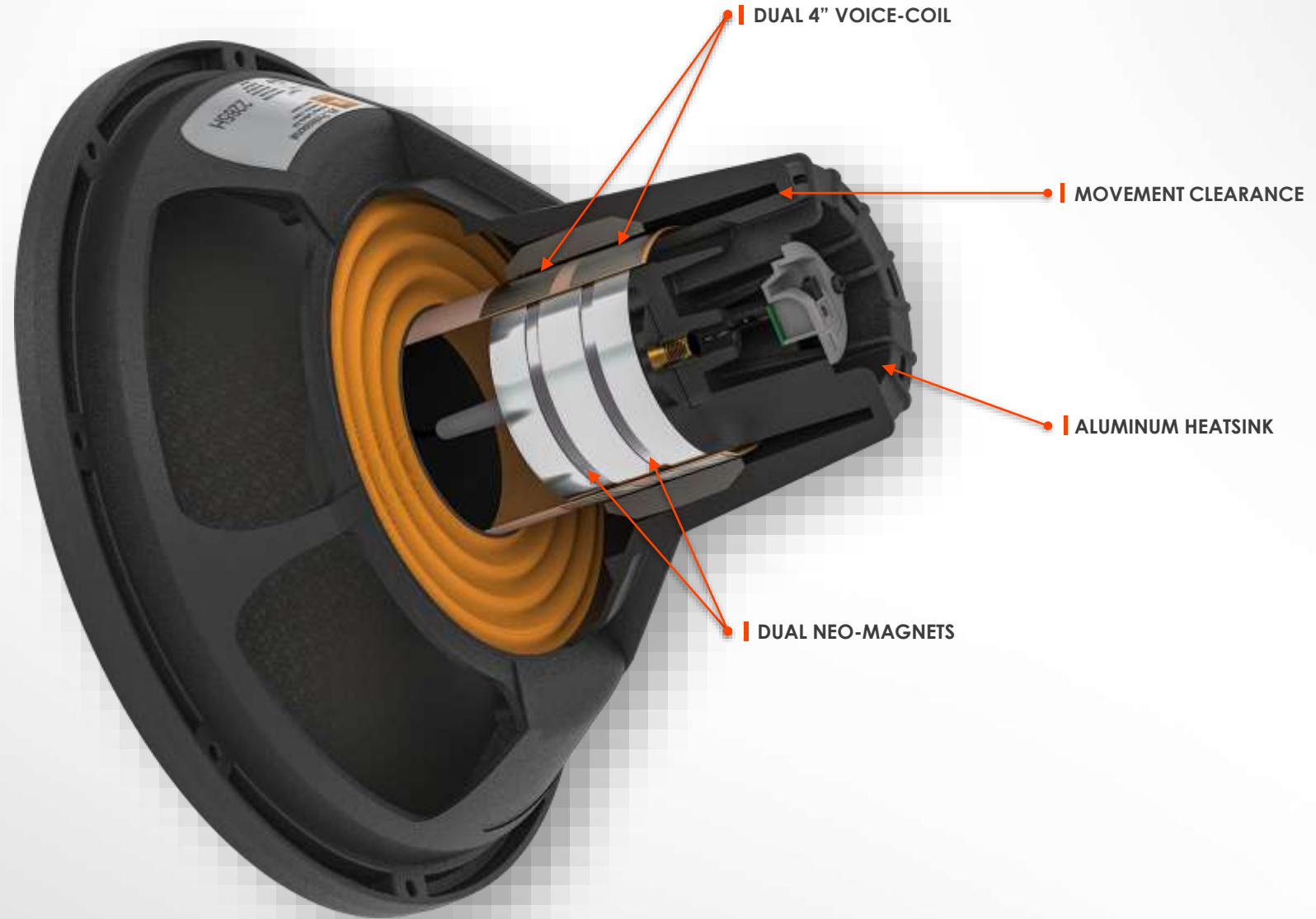
JBL 2285H | B15 / B15G

- 15" woofer
- Dual 4" Voice-Coil



JBL 2288M / H | B18 / B28

- 18" woofer
- Dual 4" Voice-Coil





RIGGING SYSTEM

VTX SERIES | B15

B15 RIGGING SYSTEM

- Trigger operated, spring-loaded mechanism
- Cardioid arrayable
- Support for up to (15) subwoofers
- Compatible with all A6 rigging accessories



VTX SERIES | B15



B15 RIGGING SYSTEM

- Mechanically compatible with A6 for mixed arrays

B18 RIGGING SYSTEM

- Captive, spring-loaded mechanism
- Cardioid arrayable
- Support for up to (16) subwoofers
- Compatible with all A8 rigging accessories



B18 RIGGING SYSTEM

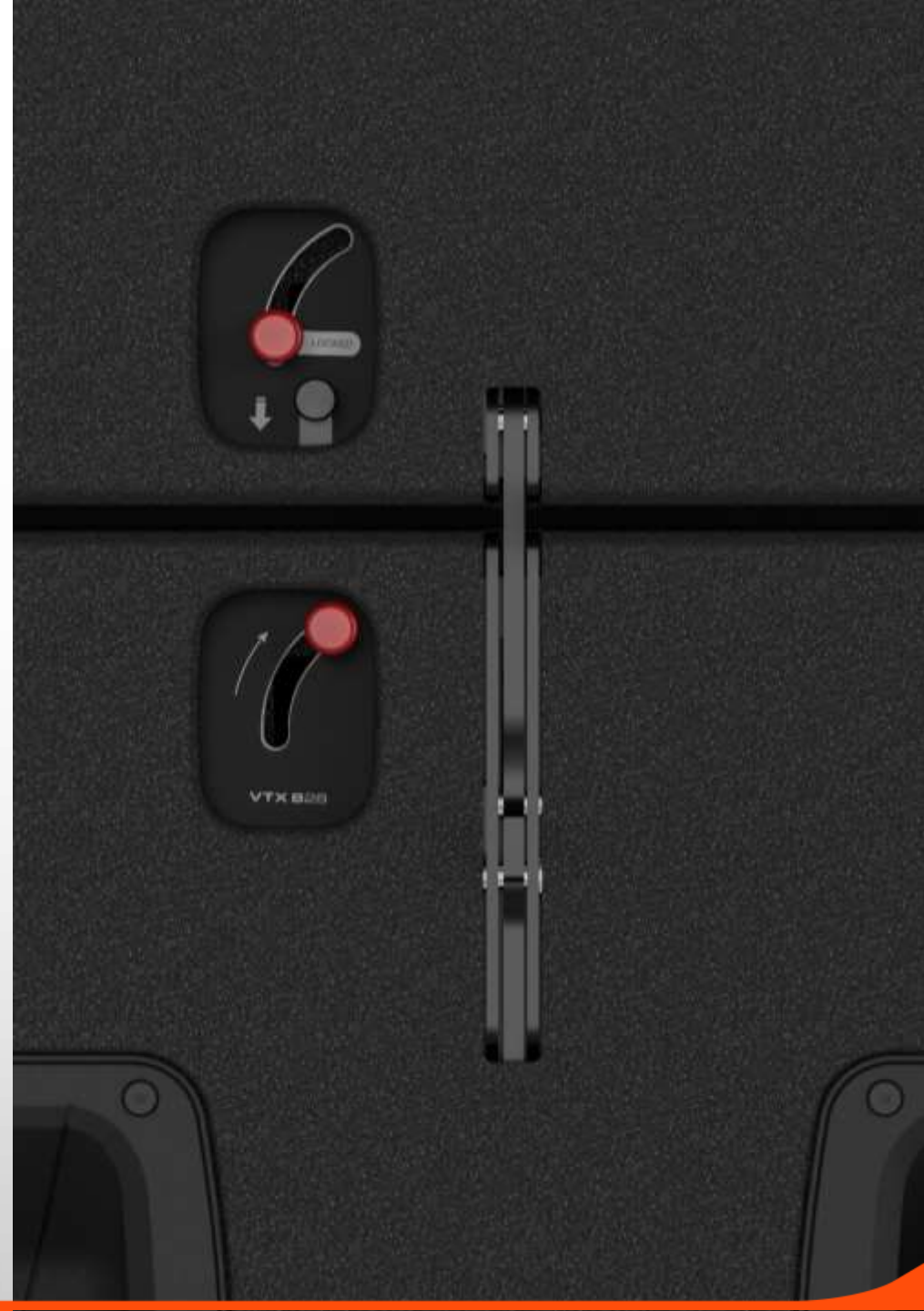
- Mechanically compatible with A8 for mixed arrays



VTX SERIES | B28

B28 Rigging System

- Innovative two-point rigging system
- Spring-loaded mechanism
- No pins or pin cables
- Unique secondary safety lock design
- Cardioid compatible



VTX SERIES | B28

B28 RIGGING SYSTEM

- Symmetrical rigging
- Designed for standard and cardioid configurations
- Rated for (16) subwoofers



Ground Configurations



Row Orientation



Column Orientation

WIRING & AMPLIFICATION

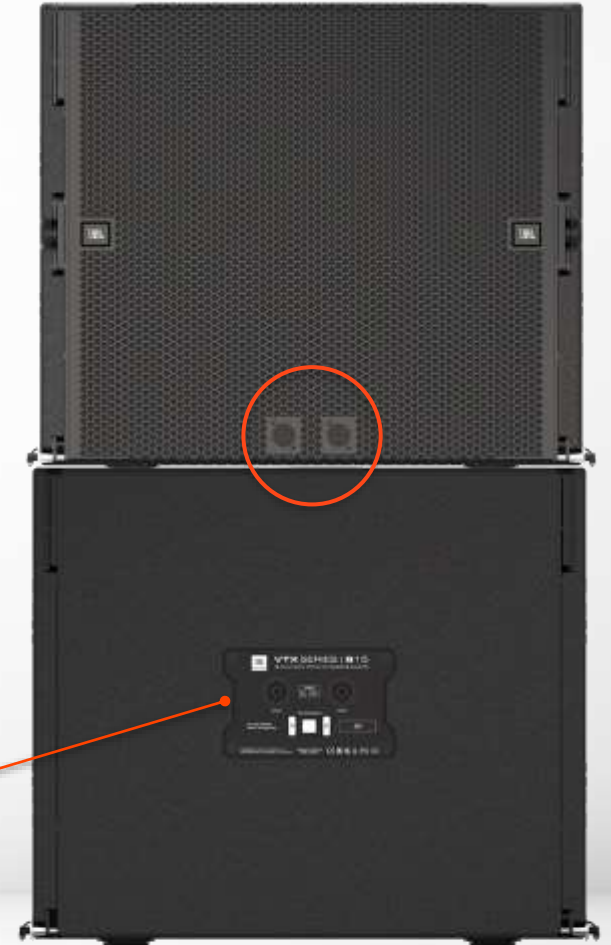


Flexible Wiring

- Front and Rear NL4 Connectors (all models)
- Pin1 – Pin 2 Channel Selection Switch (B15, B18)



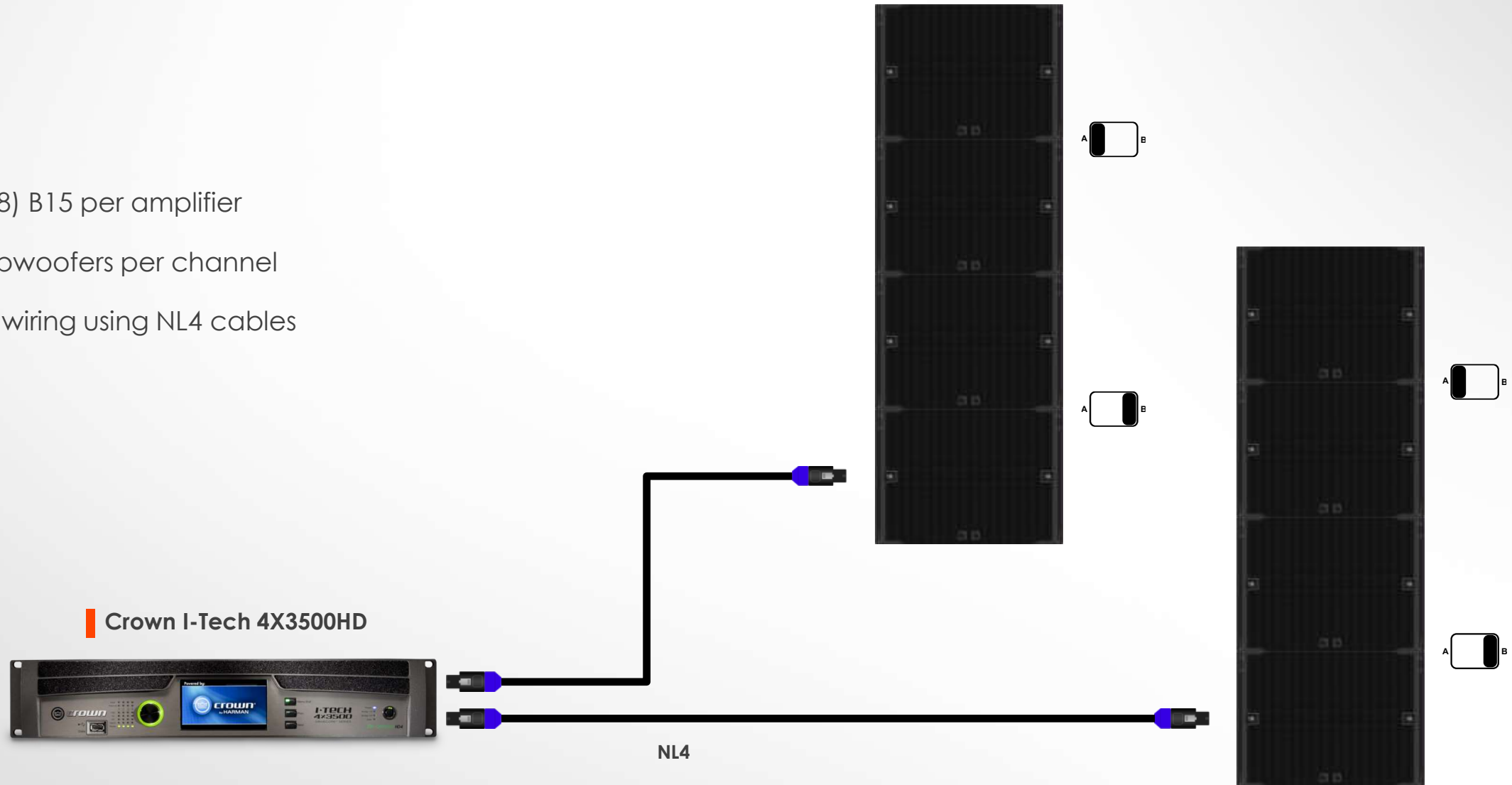
Channel Selection Switch



VTX SERIES | B15



- Up to (8) B15 per amplifier
- Two subwoofers per channel
- Simple wiring using NL4 cables



VTX SERIES | B18



- Up to (4) B18 per amplifier
- One subwoofers per channel (4ch)
- Two subwoofers per channel (2ch)
- Simple wiring using NL4 cables

Crown I-Tech 4X3500HD



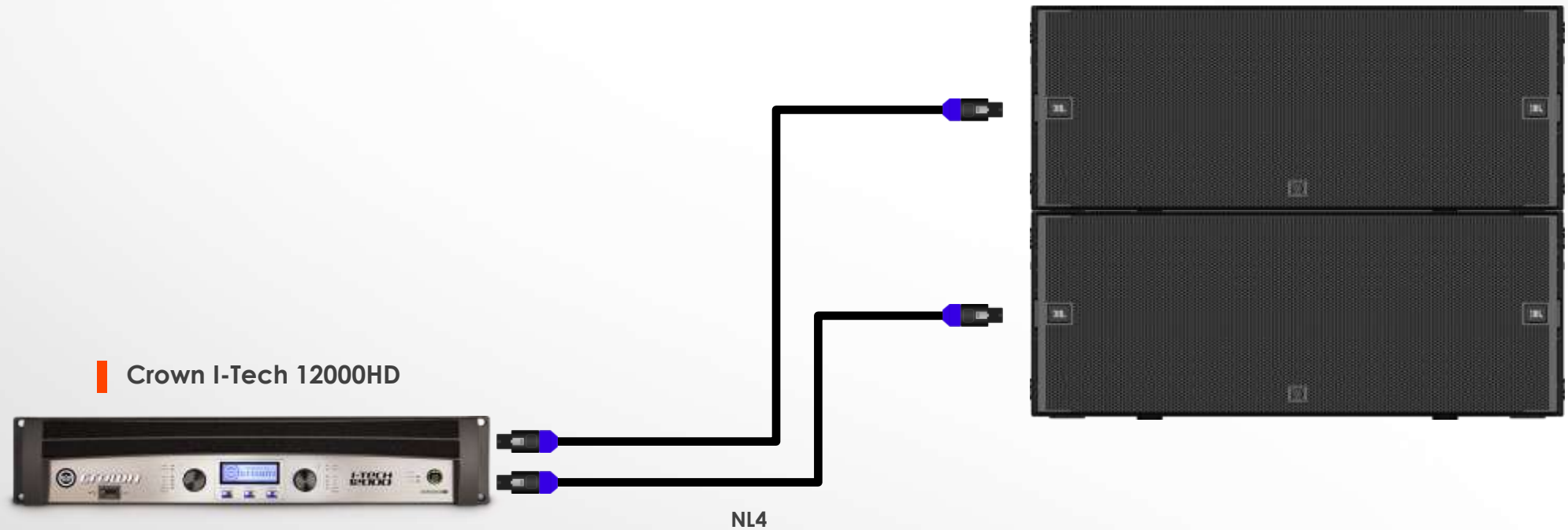
NL4



VTX SERIES | B28



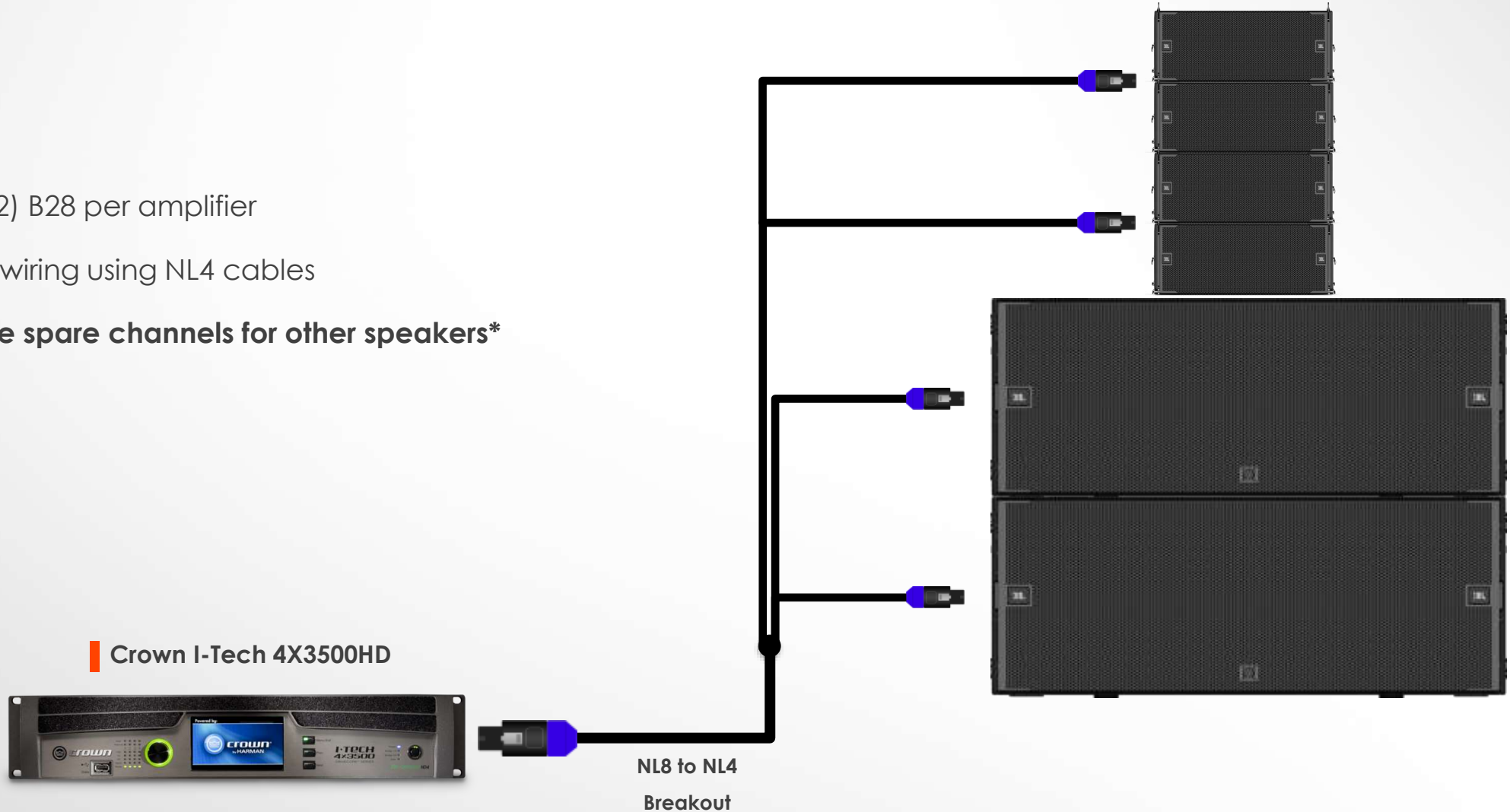
- Up to (2) B28 per amplifier
- Simple wiring using NL4 cables



VTX SERIES | B28



- Up to (2) B28 per amplifier
- Simple wiring using NL4 cables
- **Can use spare channels for other speakers***



Crown I-Tech 4X3500HD

NL8 to NL4
Breakout

*208v minimum voltage required



ACCESSORIES

ACCESSORIES



Array Frames



Mini Frames



Suspension Bars



Base Plates



Transport Carts/Cases



Covers



Dolly Sets



Rigging Hardware

VTX AF | Array Frame



- Support for up to 24 boxes
- Main frame + Extension Bar design
- Support for A Series and B18
- 1 Extension Bar and 3 Shackles included
- Reversible for up-tilt applications
- 0.5-degree resolution for single point applications
- Built in laser bracket



Compatibility:

- **VTX A8**
- **VTX A12**

VTX AF | Array Frame



- Support for 18 to 24 boxes
- Main frame + Extension Bar design

Support for A-Series and B18

- 1 Extension Bar and 3 Shackles included
- Reversible for up-tilt applications
- 0.5-degree resolution for single point applications
- Built in laser bracket

Compatibility:

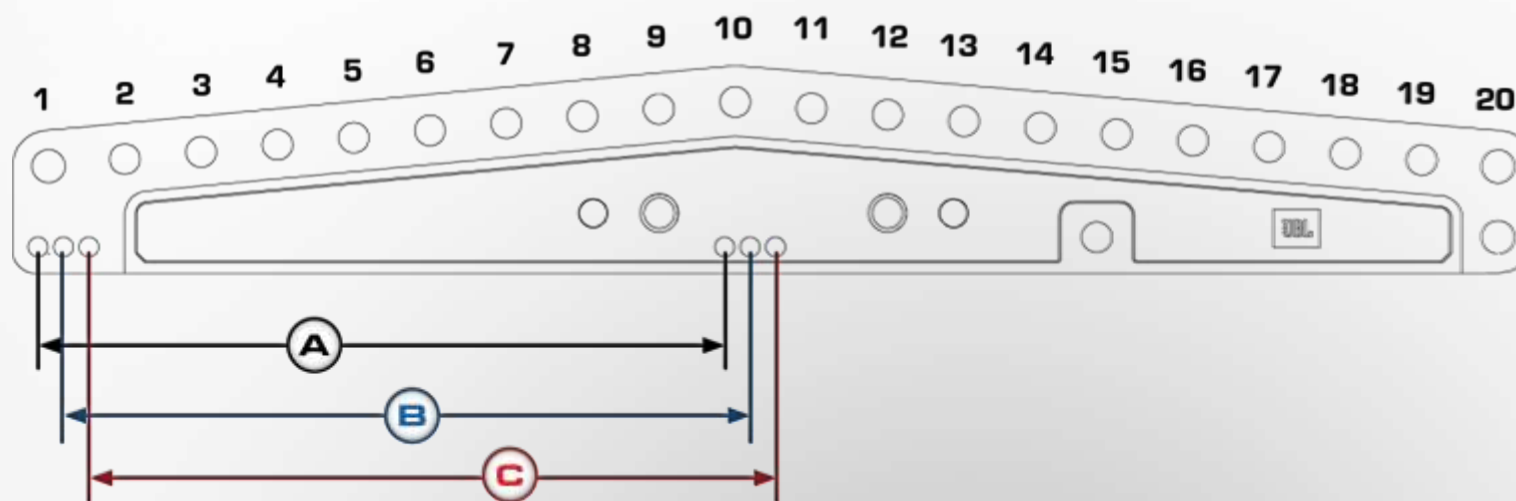
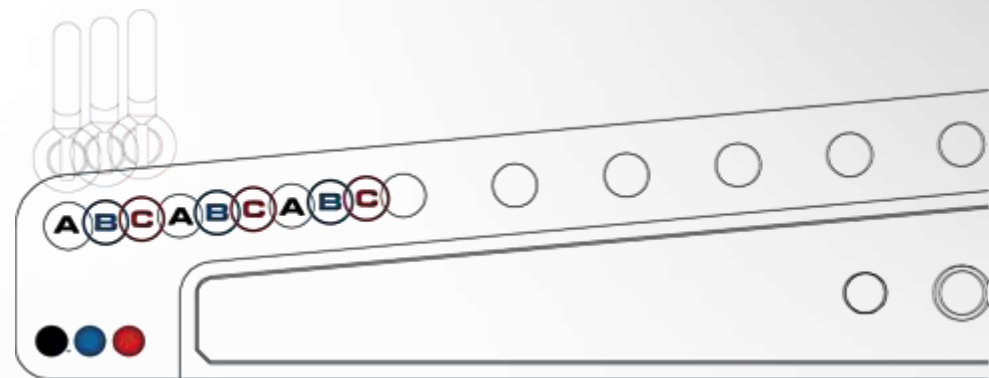
- **VTX A8**
- **VTX A12**



VTX AF | Array Frame

Precision Shackle Alignment System

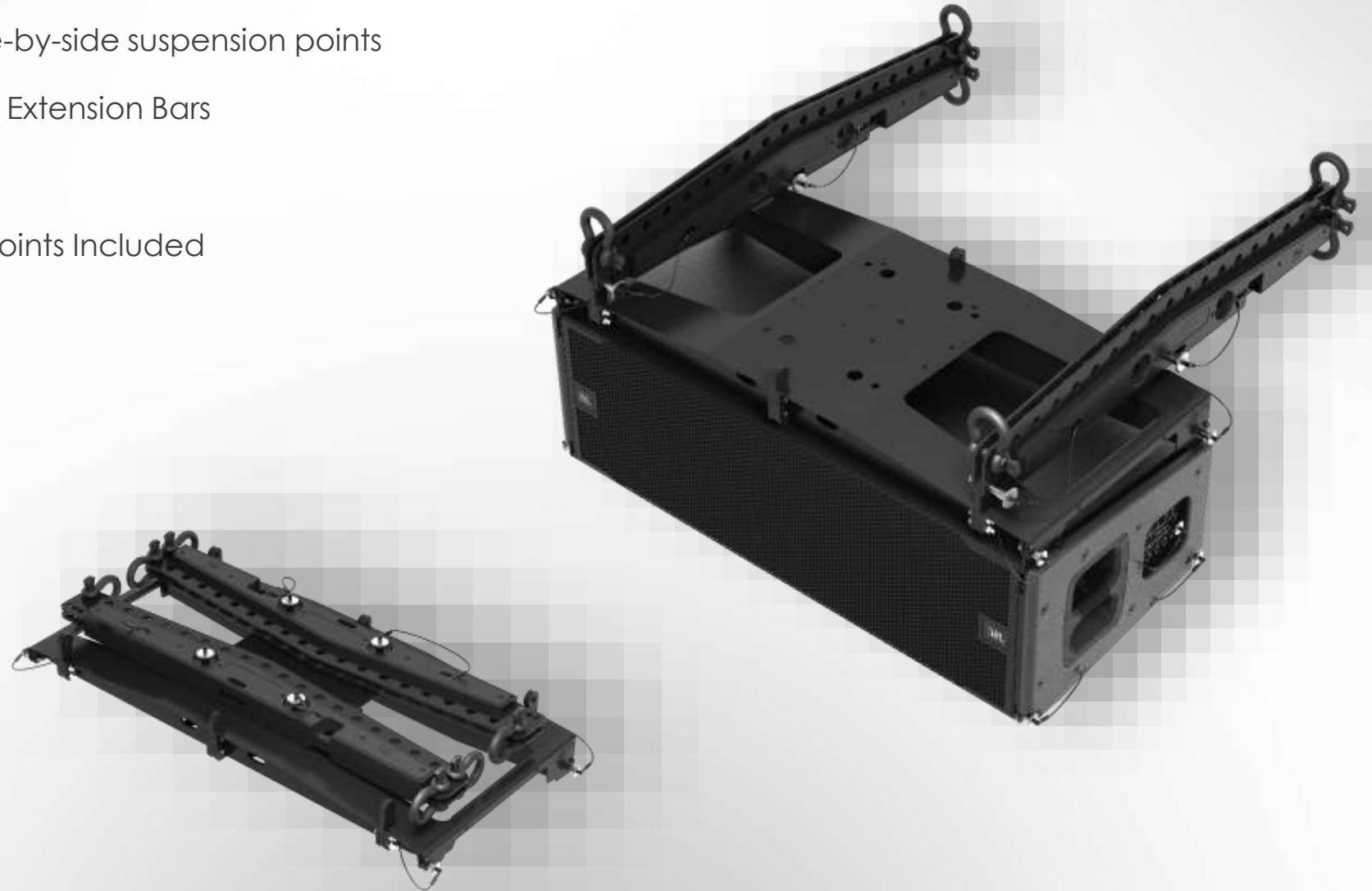
- 0.5-degree resolution for single point applications
- Triples the shackle point options



VTX AF EB | Extension Bar



- Additional Extension Bar for side-by-side suspension points
- Array Frame can store up to 2 x Extension Bars
- Light-weight design
- 3 Shackles and 4 Attachment Points Included

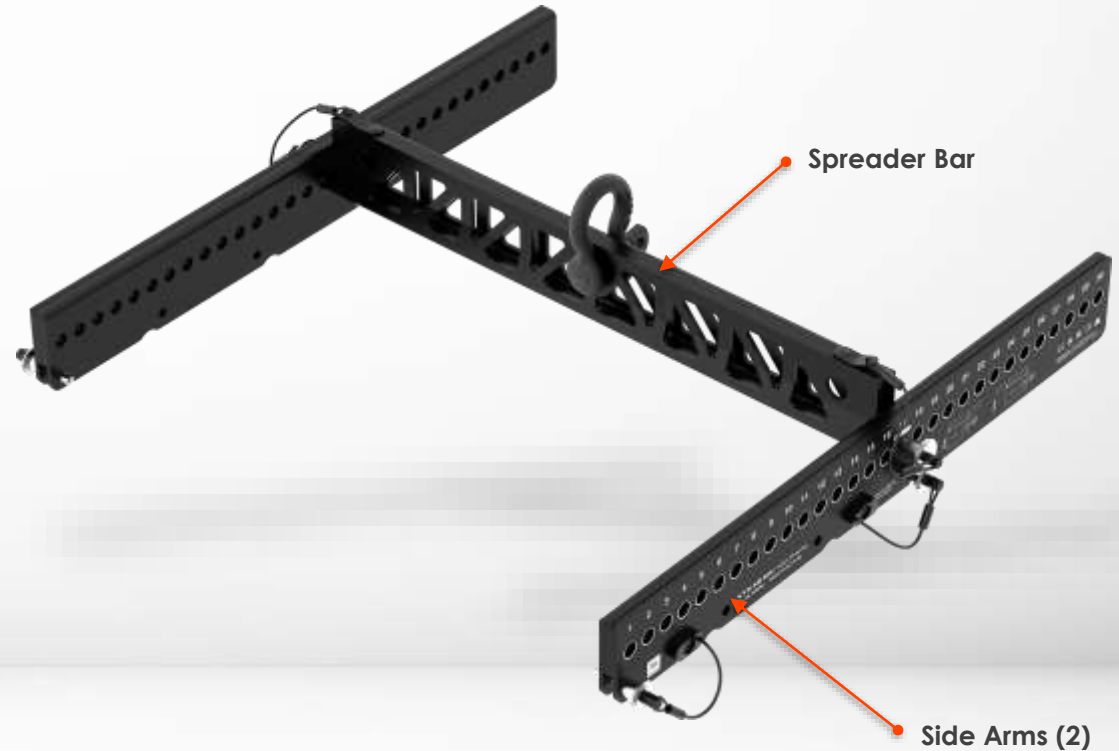


Compatibility:

- **VTX A8**
- **VTX A12**

VTX MF | Mini Frame

- Support for single-point & dual-point configurations
- Includes secondary safety-point attachments
- Support for up to (24) VTX A6
- Support for up to (10) VTX A8
- Shackle Size: 1/2-inch



Compatibility:

- **VTX A6**
- **VTX A8**

Storage Configuration



VTX MF | Mini Frame

Mini Frame deployment options

 SINGLE-POINT



 SIDE-BY-SIDE



 REVERSED



VTX MF | Mini Frame

- Support for single-point & dual-point configurations
- Includes secondary safety-point attachments

Compatible with Subwoofers

- Shackle Size: 1/2-inch



Compatibility:

- **VTX A6**
- **VTX A8**

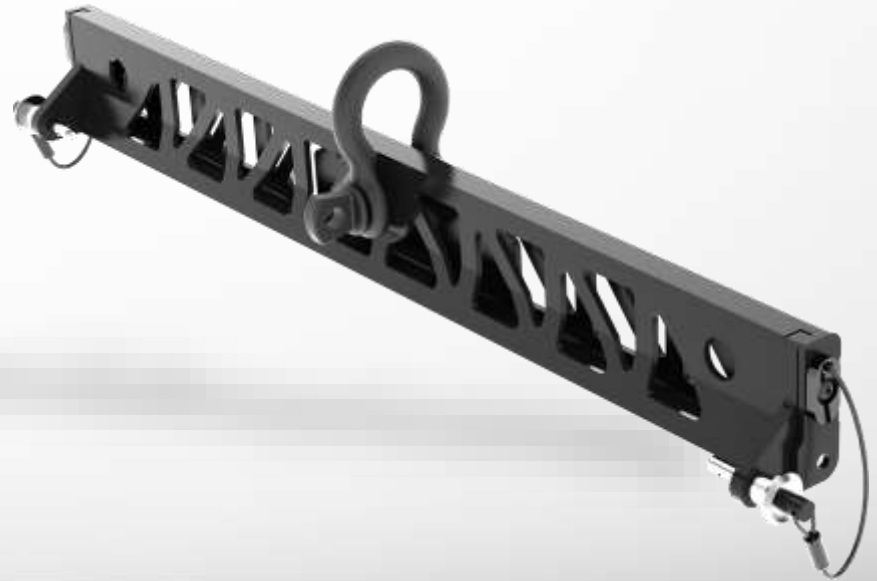
VTX SB | Suspension Bar



- Suspension Bar accessory

Compatible with A and B-Series

- Includes secondary safety-point attachments
- Compatible with the RC500 (VTX A6)
- Lightweight design
- Shackle Size: 1/2" A6 | 5/8" A8 and A12



Compatibility:

- **VTX A6**
- **VTX A8**
- **VTX A12**

| VTX SB | Suspension Bar

■ Pull-back

- Connects to the last speaker of an array
- Achieves down-angles not otherwise possible with the Array Frame alone



| VTX SB | Suspension Bar

■ Main Frame + Pull-back

- Connects to the top and bottom of an array
- Achieves down-angles not otherwise possible with Mini Frame alone
- Less expensive, higher flexibility solution for installations

■ Quad-point support

- Ideal for connecting to custom installation grids



VTX SB | Suspension Bar



- Compatible with B15, B18
- Single-point, dual-point, quad-point



| VTX SB | Suspension Bar

■ Main Frame + Pull-back

- Connects to the top and bottom of an array
- Achieves down-angles not otherwise possible with MF
- Less expensive, higher flexibility solution for installations
- Ideal for directional arrays



VTX B28 SB | Suspension Bar



- Used for suspending VTX B28 arrays
- Support for single-point & dual-point configurations
- Includes secondary safety-point attachments
- Symmetric / reversible design
- (2) 5/8" shackles included
- Same width as B28



VTX B28 SB | Suspension Bar

Single-point



Dual-point



VTX RC500 | Rotating Clamp



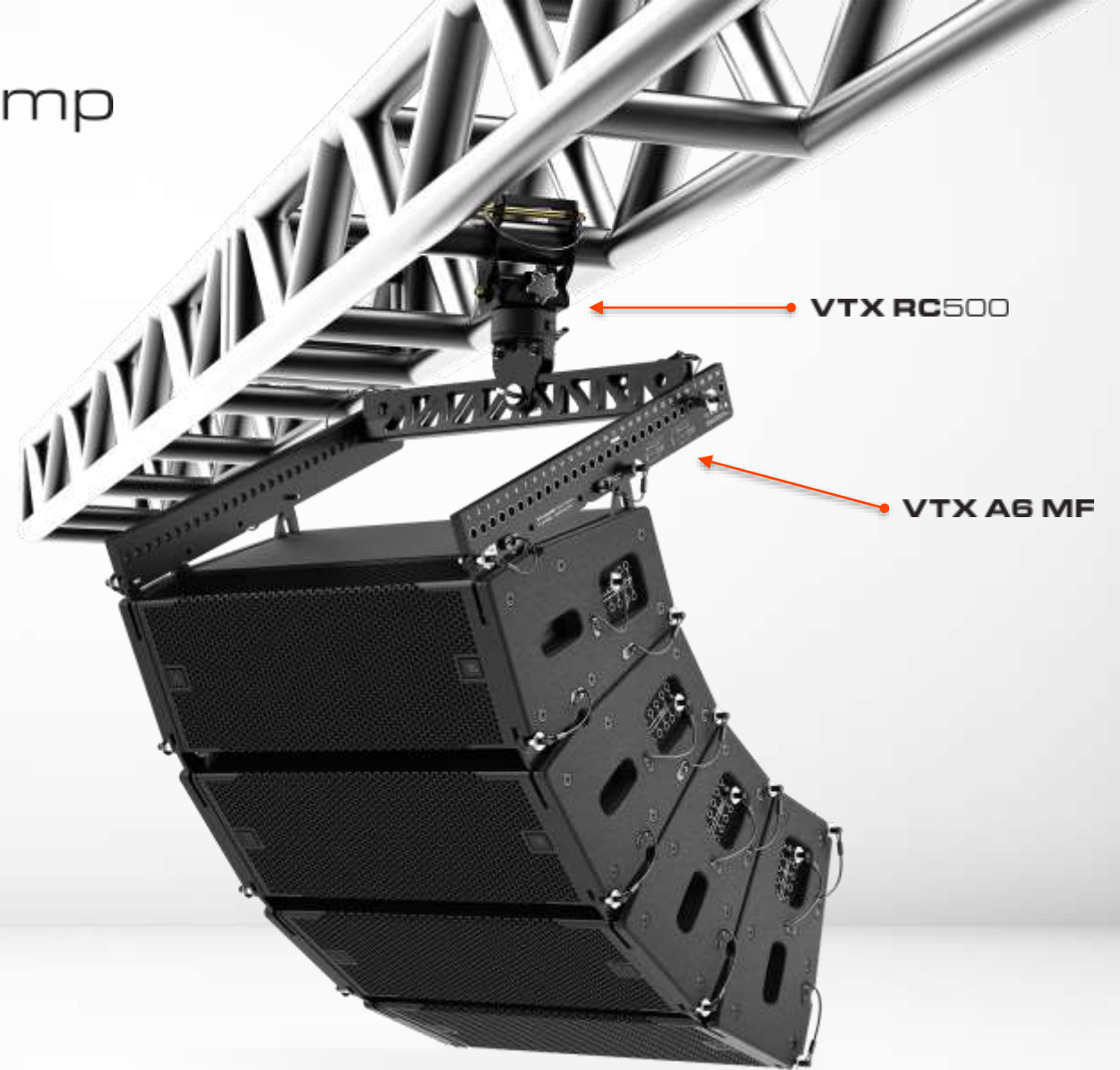
- Universal Truss/Pipe Clamp Adapter
- 360-deg rotation
- ½-inch Shackle Attachment support
- 10-degree rotation marks
- Weight: 3.3kg (7.3lbs)
- Working Load Limit: 500 kg (1100 lbs)

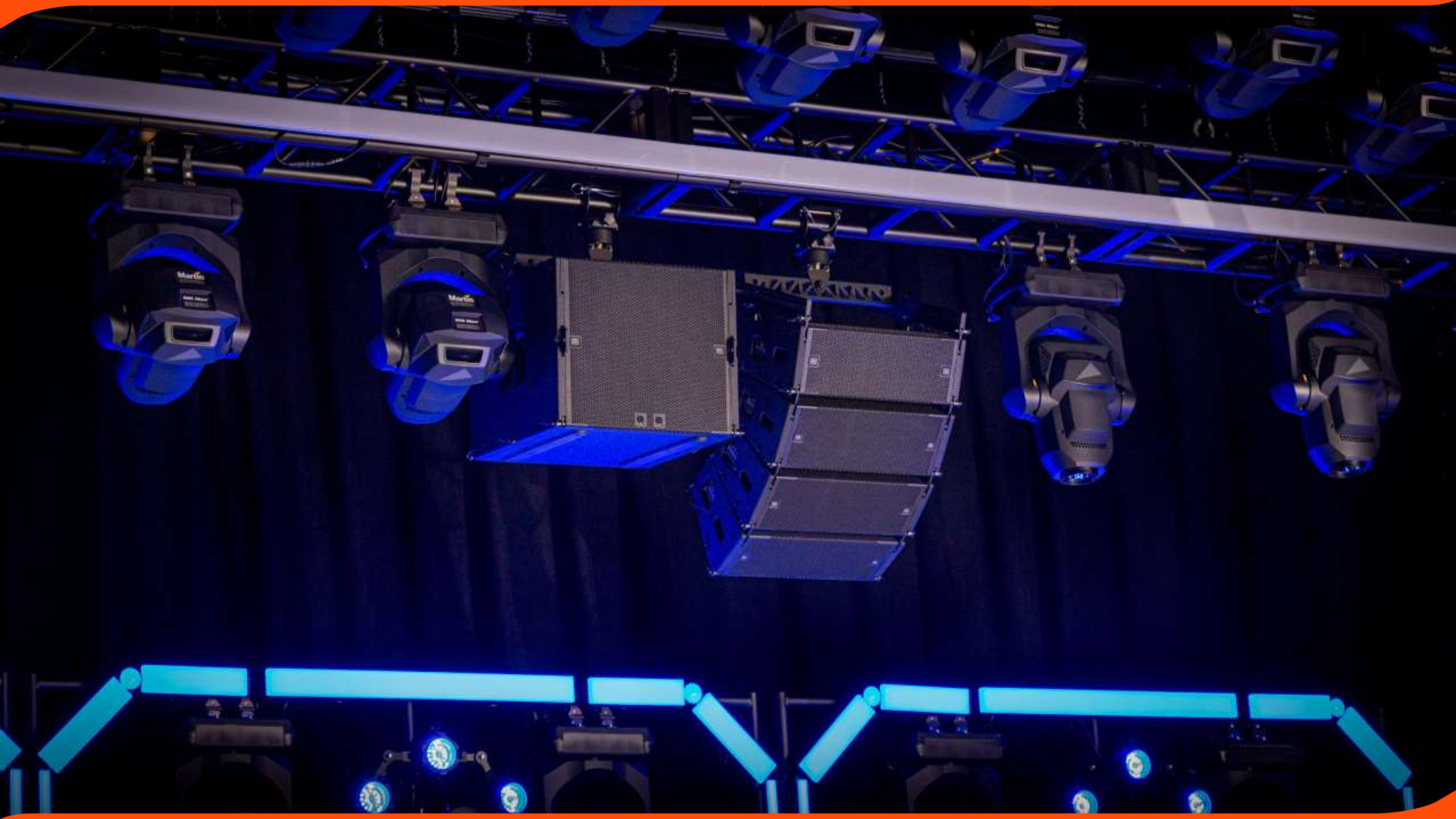


VTX RC500 | Rotating Clamp

Applications / Use-cases

- Trade shows
- Corporate shows
- Small theater productions
- Center channel arrays





VTX A6 CM | Ceiling Mount



- Ceiling mount for A6 or B15
- Low-profile design
- Two-part design
- Comes with drill-template
- A6 Angle Range: -7.5° to $+7.5^{\circ}$



VTX A6 CM | Ceiling Mount

■ Applications / Use-cases

- Under-balcony fills
- A6 attachment to “New York style theater carts”
- Under-stage fills
- Low-ceiling installation: small night clubs, churches etc.
- Inexpensive interface for custom installations



VTX BP | Base Plate



- Universal ground stack adapter for A-Series
- Connects to the subwoofer's M20 pole bracket
- Compatible with: B15 | B15G | B18 | B28
- M10 through holes for permanent installations
- Angle Range: -15° to +5°



Compatibility:

- **VTX A6**
- **VTX A8**
- **VTX A12**

VTX A6 BP | Base Plate

- Universal ground stack adapter for A6
- Connects to the subwoofer's M20 pole bracket
- Compatible with: B15 | B15G | B18 | **B28**
- M10 through holes for permanent installations
- Angle Range: -15° to +5°

VTX A6 BP



VTX A8 BP | Base Plate

- Universal ground stack adapter for A8
- Connects to the subwoofer's M20 pole bracket
- Compatible with: **B18** | B28
- M10 through holes for permanent installations
- Angle Range: -15° to $+5^{\circ}$

VTX A8 BP



VTX 12 BP | Base Plate

- Universal ground stack adapter for A12
- Connects to the subwoofer's M20 pole bracket
- Compatible with: **B28**
- M10 through holes for permanent installations
- Angle Range: -15° to $+5^{\circ}$

VTX A12 BP



VTX B1 GND | Ground Stack Accessory



- Universal ground stack accessory
- Connects directly to the rigging
- Stabilizes stacks when used in mixed-array configurations

Compatible with B15 and B18

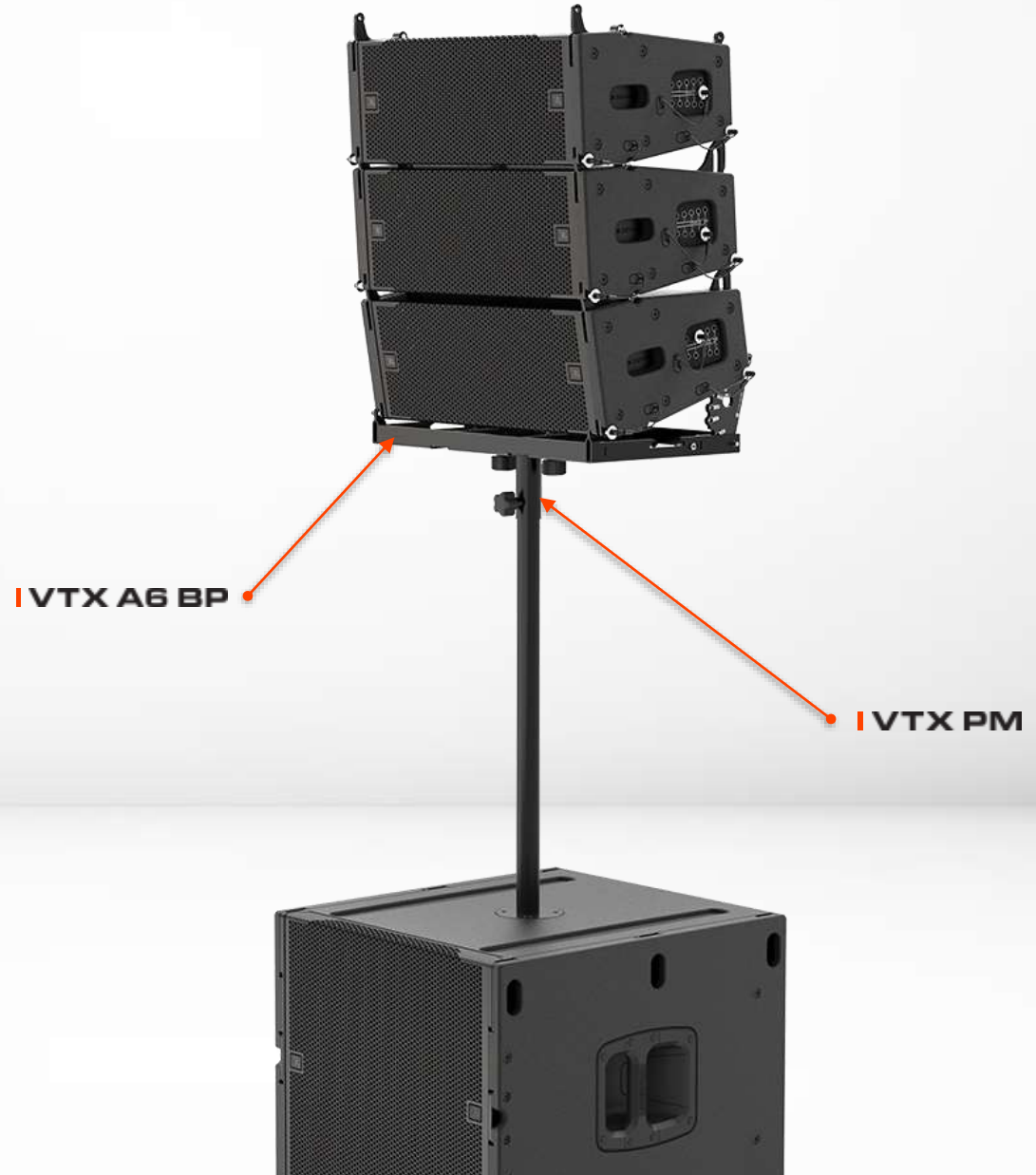
VTX B1 GND



VTX PM | Pole Mount



- Universal pole-mount adapter
- Connects to any standard 35 mm pole
- Compatible with VTX A6 BP and SRX906LA BP
- Support for up to (3) VTX A6
- (2) M10 Knobs included



VTX A6 CASE | Road Case

- Road case for (4) A6 cabinets
- Stackable design
- Sized for US and international truck sizes
- Built-in storage for accessories
- Same size as Crown V-Rack
- JBL DuraFlex finish
- Designed and manufactured by JBL



| Accessory Storage

VTX A VT | Vertical Transporter



- Vertical transport cart for 4x A12 or A8 enclosures
- Truck friendly dimensions
- Includes a hard top for easy stacking
- Support for ground stacking with optional accessory
- Heavy duty casters



- Compatibility:
- **VTX A8**
 - **VTX A12**

VTX A VT CVR



- Heavy-duty soft cover for VTX A12 or A8 enclosures
- Includes input panel flaps for testing purposes
- Clear see-through pocket for shipping labels
- Handle cut-outs for easy transportation
- **Folds and stores between the VT**
- Heavy-duty industrial grade zippers



■ Cover Storage



VTX VT TOP | Vertical Transporter Top



VT Top can be used as a Front Fill support

- Up to 3x A12 or A8
- Fixed 15° down angle



VTX ACC | Accessory Cover & Caster Board



- Transportation accessory for a single VTX B-Series Subwoofer
- Ideal for small to mid-size shows

Includes front-face caster board and soft-cover

- Cover includes handle cutouts and input panel flap
- Heavy-duty casters
- Stackable design



VTX B VT | Vertical Transporter



- Model specific VT carries 2-3 B18 or 2-4 B28
- Ideal for larger shows
- Cover includes handle cutouts and input panel flap
- Heavy-duty casters

Compatibility:

- **VTX B18**
- **VTX B28**



VTX B28 VT CVR

VTX A12 VT GND



- Innovative zero-gravity angle set mechanism
- Integrated Gas-Springs do the heavy lifting
- Easy angle selection using Quick Release Pins
- Screw-jacks only used for leveling not aiming
- Support for B28 VT



VTX A12 VT GND



VTX A12 BP



VTX B28 VT

VTX SERIES

SYSTEM SOLUTIONS

- Scalable configurations
- Pole mounted, ground stacked, suspended



- Toolbox
- Light
 - Speakers
 - Filters
 - Groups
 - Use Left V25-II
 - Use Right V25-II



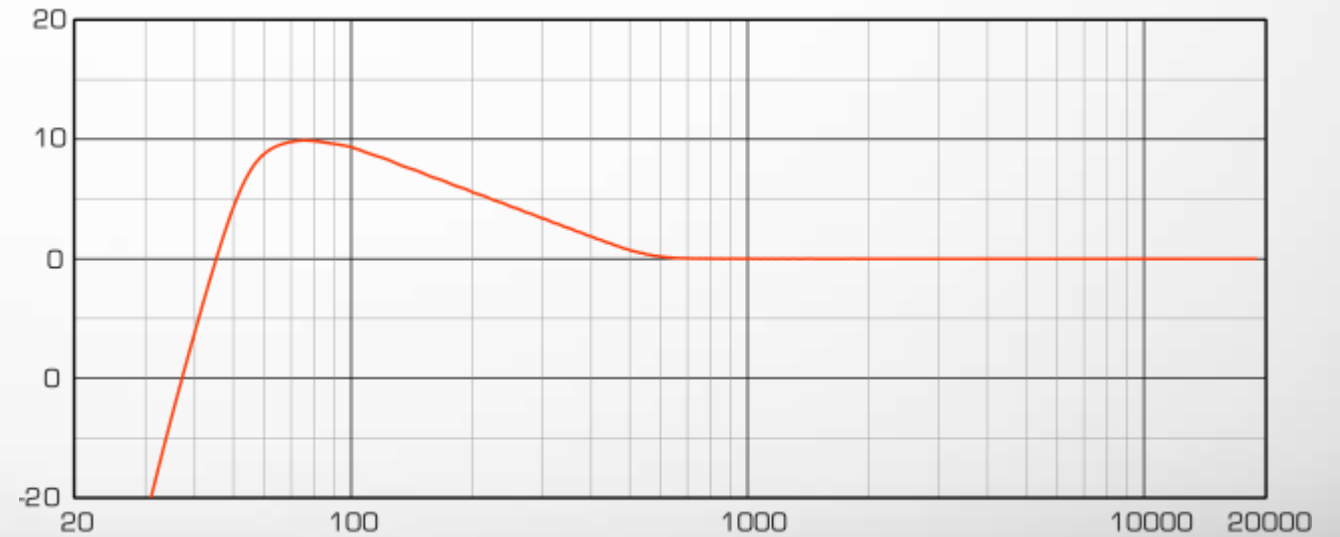
PRESET OPTIONS

Array Filters	Enable	Type	Frequency	Gain	Q/BW/Slope	DELETE	COPY	PASTE
1: Array Size Compensation	ON	LP Shelf 6dB/oct	500Hz	-3dB		DELETE	COPY	PASTE
2: Atmospheric Absorption Compensation	ON	HP Shelf EQ	12kHz	0dB	4	DELETE	COPY	PASTE
Circuit Filters								
3: Throw Distance Compensation	ON	HP Shelf EQ	6.3kHz	0dB	4	DELETE	COPY	PASTE

Array Preset Target

- Ideal for (8) box arrays
- Flat down to 500 – 600 Hz
- Rising LF response
- 8 – 10 dB rise depending on conditions

Frequency Response Target for (8) Box Array

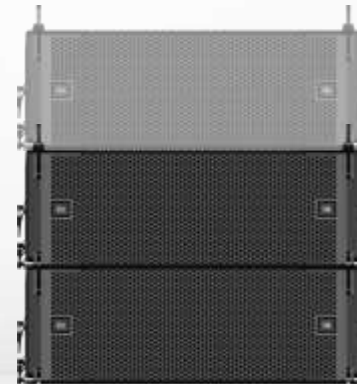


Preset Options

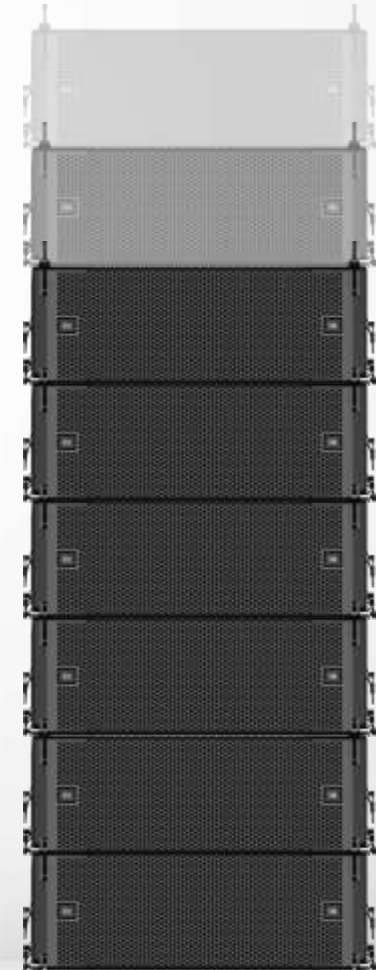
- Preset selection depends on the number of speakers
- Presets shape the response to match the application
- (2 or 3) LF contour options*



VTX Ax FL
Fill Preset
Single Cabinet



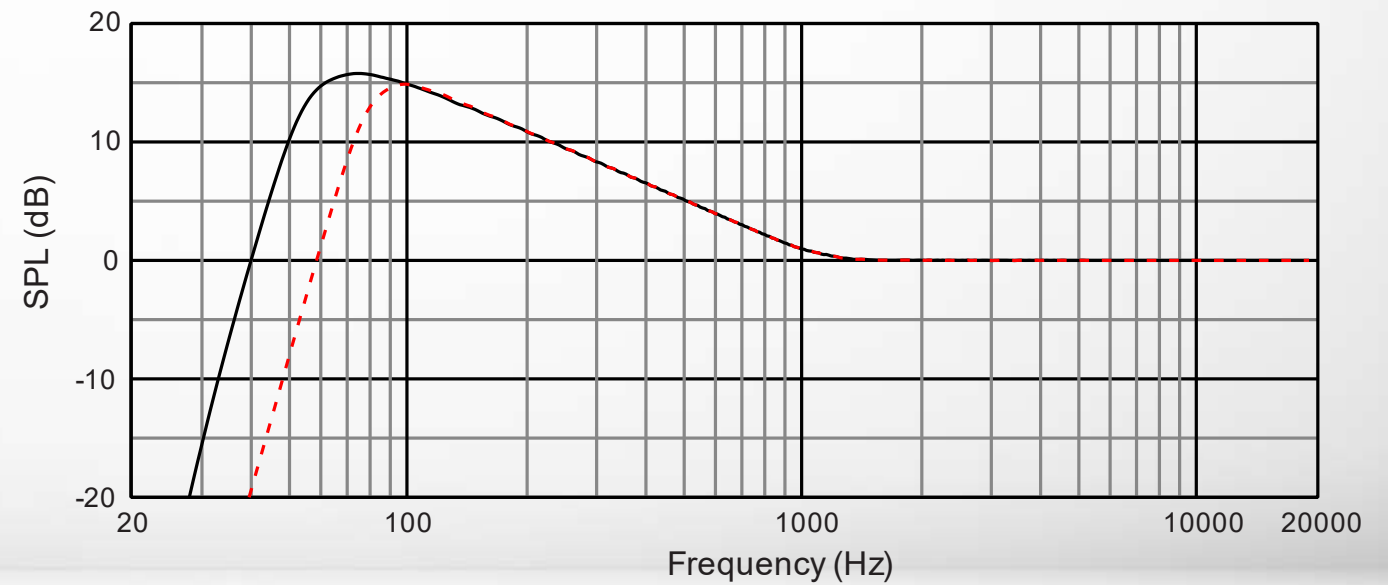
VTX A6 SA
Small Array
A6 Only
2 - 3 Cabinets



VTX Ax Array
Standard Array
2 - 24 Cabinets
+ ASC Filter

Crossover Options

- Full-range or 80 Hz Crossover options*
- Full-range provides lowest extension
- 80 Hz provides maximum SPL



*VTX A6 only has an 80 Hz crossover option

Subwoofer Preset Options

- Presets adjust crossover points and phase response
- Use REAR preset for cardioid configurations
- Presets are sent from Performance Manager software



LF Modes:

- 60 Hz
- 60 Hz REAR
- 80 Hz
- 80 Hz REAR

VTX SERIES

SYSTEM SOLUTIONS



80 Hz

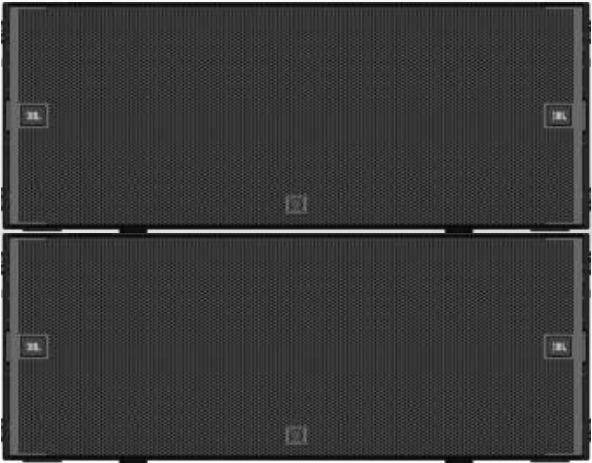
80 Hz REAR

80 Hz



80 Hz

Full Range



80 Hz

60 Hz

- Toolbox
- Light
 - Speakers
 - Input Files
 - Groups
 - Use Left V25-II
 - Use Right V25-II



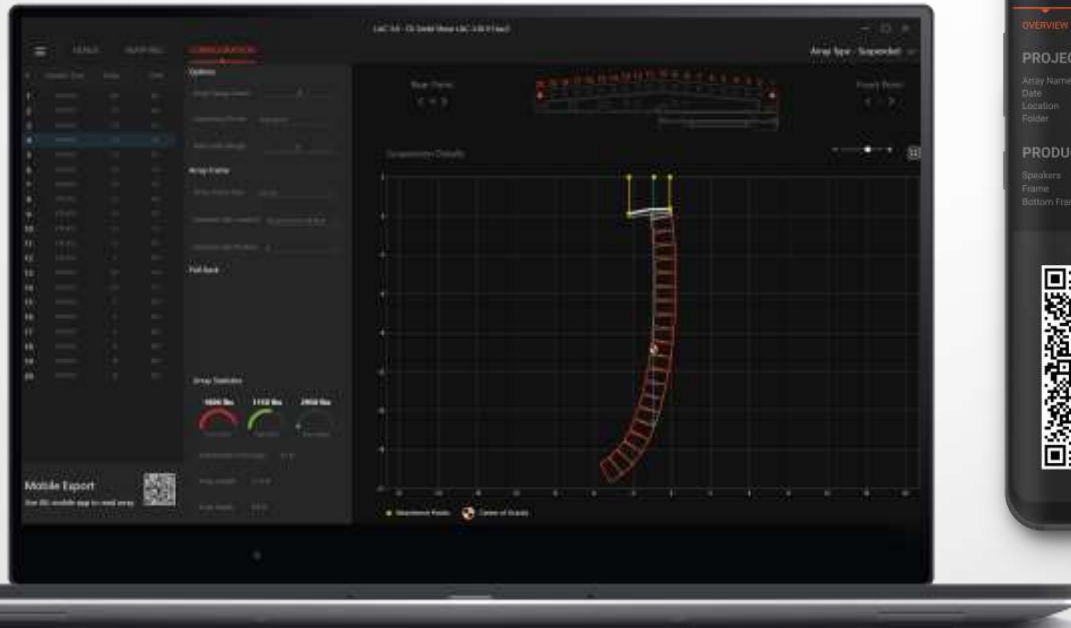
SOFTWARE

Array Filters	Enable	Type	Frequency	Gain	Q/BW/Slope	DELETE	COPY	PASTE
1: Array Size Compensation	ON	LP Shelf 6dB/oct	500Hz	-3dB				
2: Atmospheric Absorption Compensation	ON	HP Shelf EQ	12kHz	0dB	4			
Circuit Filters	Enable	Type	Frequency	Gain	Q/BW/Slope	DELETE	COPY	PASTE
3: Throw Distance Compensation	ON	HP Shelf EQ	6.3kHz	0dB	4			

LINE ARRAY CALCULATOR 3™

ARRAY LINK™

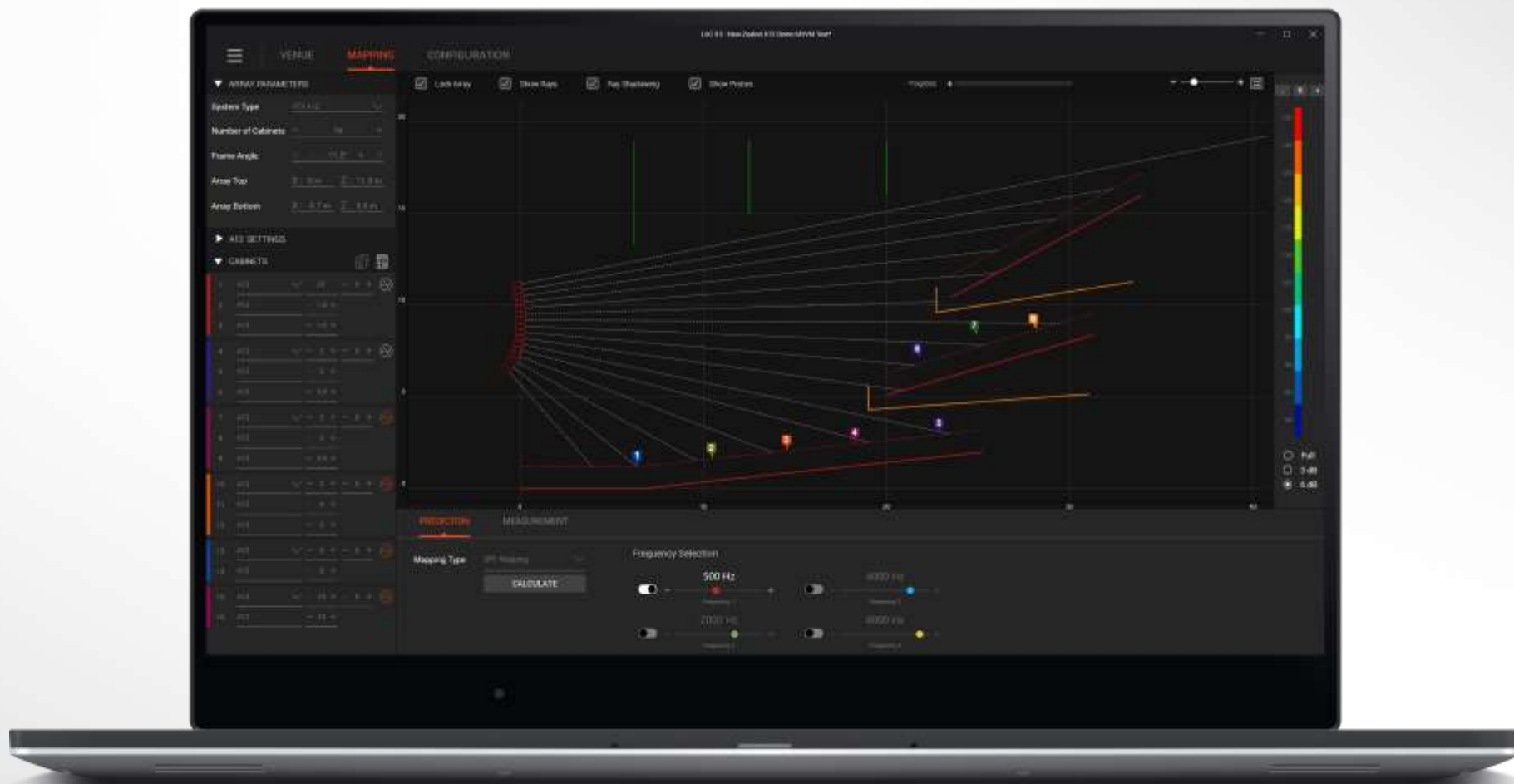
HiQnet performance manager™



LINE ARRAY CALCULATOR 3™

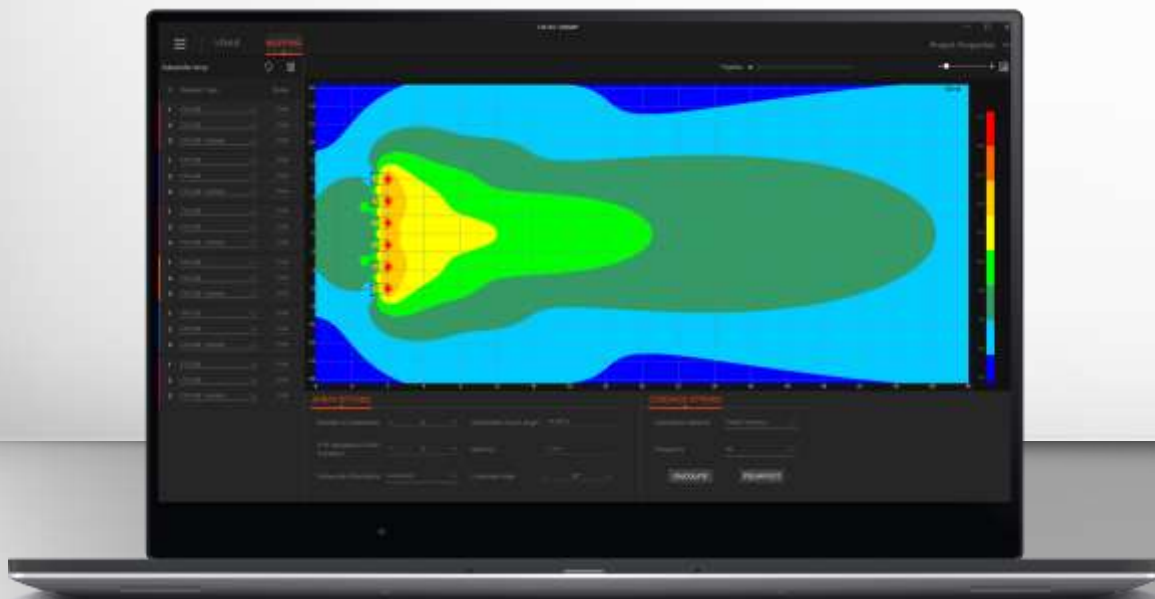


- Prediction for all VTX products
- Fast and easy workflow
- Subwoofer prediction
- EDS calculations
- Virtual measurement functions
- Mechanical/safety reports
- DSP optimization features
- Array Link integration

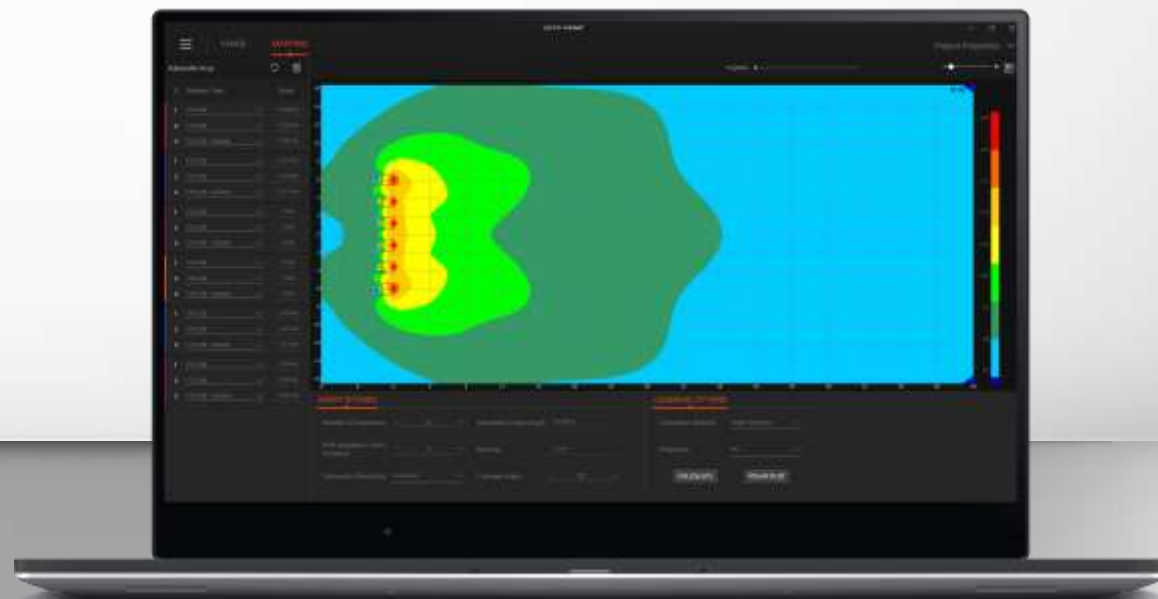


Subwoofer Prediction:

- Distributed Subwoofer Arrays
- Support for Cardioid Configurations
- EDS Delay value calculator for subwoofer steering



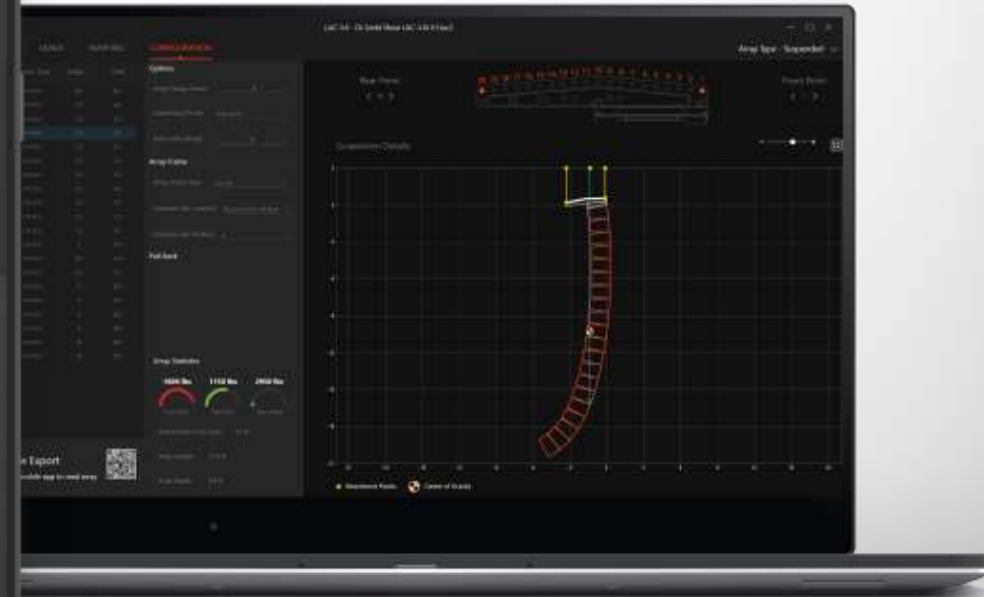
- Coverage **without** delays



- Coverage **with** delays



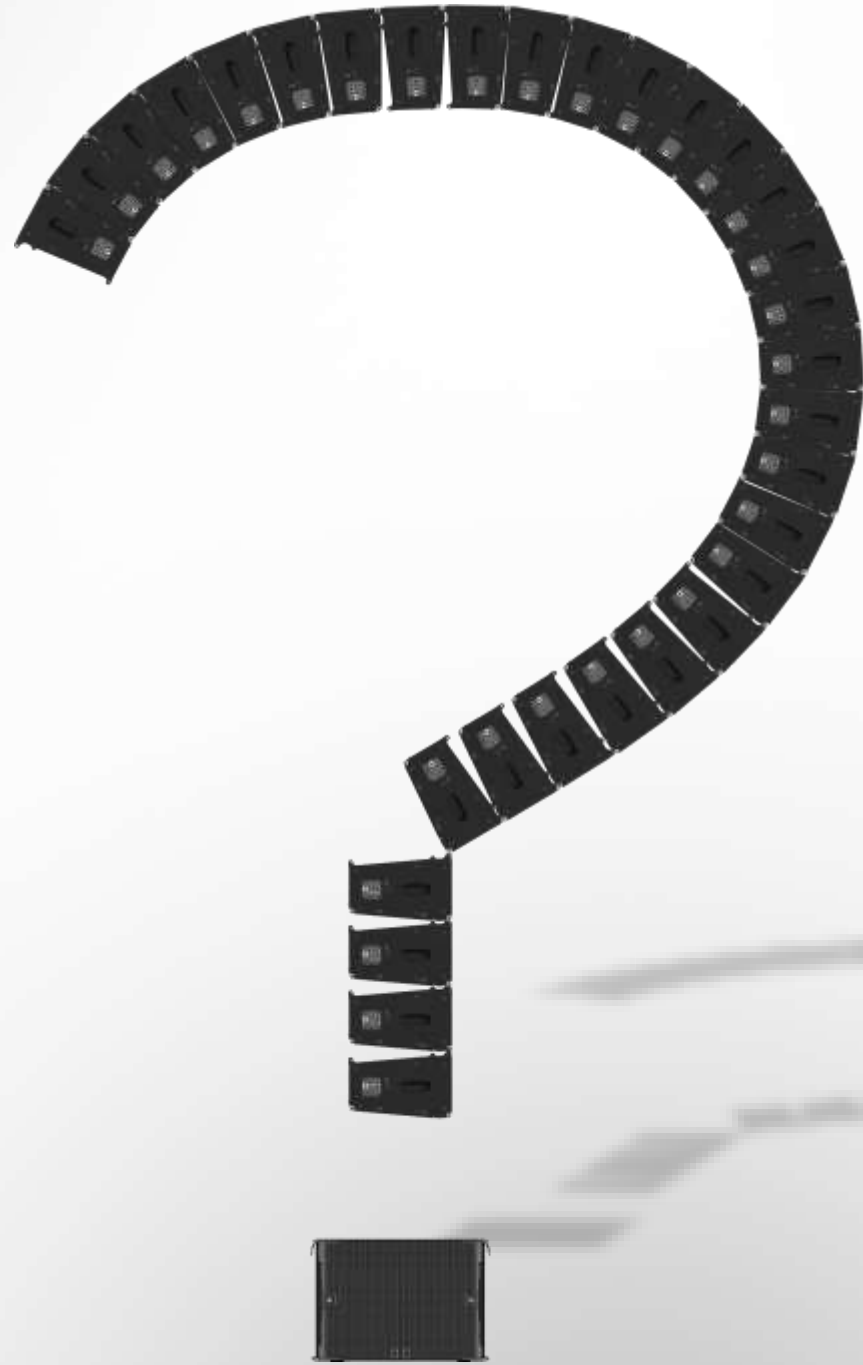
- Mobile app for iOS and Android
- Rigging information including:
 - Array size and location
 - Box-to-Box angles
 - Array Frame position and parameters
 - Array weight



HIQnet performance manager™

- System control for VTX Systems
- Step-by-step design workflow
- Automated grouping functionality
- Easy preset management
- Built-in array optimization tools
- Smart integration
- Touch enabled User Interface
- Multi-touch gesture support







THANK YOU