

# Technical Book



Edizione Giugno 2021





# ATOMIC 3000 LED

LED STROBE with AURA EFFECT



## Atomic 3000 LED

The Atomic™ 3000 LED is the perfect blend of a traditional strobe and cutting-edge LED technology. Capitalizing on the original Atomic™ 3000 DMX's 15 years of success, this new version features identical functionality and behaviour – with the added benefits of LED technology. It offers the same extreme brightness as its iconic predecessor, but with substantially lower peak power consumption.

The Atomic 3000 LED is not only a strobe, but also a creative tool that incorporates backlight illumination with RGB-controlled LEDs pointing into the reflector. It delivers stunning eye candy looks similar to the MAC Aura™ and the MAC Quantum™ Wash.

Internal FX macros and simplified re-use of the original Atomic Colors scroller complete the full-feature package and empower the Atomic 3000 LED to become the ultimate creative lighting tool.

### GALLERY



Brightest LED-based strobe on the market

Unique RGB-controlled Aura backlight for stunning eye candy looks

Same look and feel as the original Atomic 3000 DMX

### FEATURES

- Classic reflector look
- Iconic letterbox shape and industrial design
- Aura backlight (RGB) into reflector
- Dimmable house-light function at reduced brightness and power consumption
- LED and Xenon mode available via menu and DMX control channel
- Use of original Atomic color scroller made easy via internal power and data supply
- 4 button menu and LCD display for quick and easy setting adjustment
- Clever rigging and bracket solution
- 4 Channel DMX mode as Atomic 3000 (easy replacement)
- 14 Channel Extended DMX mode incl. Aura control and internal FX macros
- RDM compatible, USB port for software updates

# ATOMIC 3000

The CLASSIC STROBE

---



## Atomic 3000 DMX

The Atomic 3000 DMX is a powerful and rugged, 3000 W high-impact strobe.

GALLERY



## Atomic Colors

The Atomic Colors is a specially designed color scroller accessory which fits onto the front of the original Atomic 3000 DMX and also the new Atomic 3000 LED - allowing up to ten brightly colored strobe and blinder effects. In combination with the Aura backlight and main output of the Atomic 3000 LED it also delivers stunning three-dimensional eye candy looks.

GALLERY



# ELP WW IP

## WARM WHITE LED ELLIPSOIDAL LIGHT FIXTURE – IP65 RATED



### OVERVIEW

Martin ELP WW IP (Warm White) LED ellipsoid fixtures deliver class-leading luminance, output and superb light quality. Ergonomic Danish engineering offers advances in lighting functionality that include the easy-to-use gear-based Fine Focus—an industry first—and on-board Fast Focus, which allows focusing of the fixture without the need of DMX data. ELP also offers 16-bit dimming with 4 selectable curves.

ELP fixtures can be configured in black or white with one of four Martin fixed lens tubes (19°, 26°, 36° or 50° beam angles) or one of two Martin zoom lens tubes (15–30° or 25–50° beam angles). ELP fixtures are also compatible with third-party lens tubes and a wide range of accessories, including gel frames and gobos for flexibility in lighting design and inventory management.

The ELP WW IP is designed to withstand the elements in temporary outdoor environments, with an IP65 rating for water resistance and dust protection, and C3 corrosion resistance for improved durability.

Superior output, optics and quality, combined with unparalleled ease-of-use and convenience, make Martin ELP the leading LED ellipsoidal fixtures in their class.

### KEY MESSAGES

#### ADVANCED MARTIN OPTICS

Martin ELP ellipsoids feature optic assemblies designed in Denmark by the technology innovators behind MAC Encore, the leading LED moving light. The ELP is designed to maximize efficiency and deliver a flat field of illumination for smoother blending and mixing between fixtures.

#### CUTTING-EDGE LED TECHNOLOGY

ELP WW IP delivers 7,000 lumens of output and an industry-leading 97 CRI at 3000K color temperature, for the truest color representation on any surface. ELP ellipsoids also offer flicker-free operation for consistent light output—on and off camera—and 16-bit dimming with 4 selectable curves.

#### FOCUS ON FUNCTIONALITY

ELP takes a classic light fixture to new performance levels with a suite of innovative features. Our gear-based Fine Focus adjustment—an industry first—lets you lock focus exactly where you want it, instantly. There's no refocusing, no drifting and no slipping. Our innovative Fast

### HIGHLIGHTS

- ¥ Impressive light output and CRI rating  
7,000 lumen output rating at 3000K and industry-leading 97 CRI rating
- ¥ Revolutionary focus and functionality  
Industry's first gear-driven Fine Focus, Fast Focus for data-free focusing and more
- ¥ Compatible with universal accessories  
Use industry standard lens tubes, gel frames, gobo holders and rotators
- ¥ IP65 Rated  
Offers water resistance and complete dust protection for temporary outdoor applications

Focus feature brings the fixture to full output for 60 seconds without data running to the fixture. Halation color correction removes atypical blue and brown halos when using Martin lens tubes. And with an IP65 rating and C3 corrosion resistance, ELP CL IP was designed to withstand operation in temporary outdoor environments.

#### ERGONOMIC DESIGN

Danish engineering is all about efficiency and ergonomics, and the subtle details of ELP are no exception: We've placed the center of gravity as close to the yoke as possible, for more comfortable operation. And, we've placed tilt knobs out of the way of framing shutters, to allow quick, easy position adjustments.

#### INVEST IN THE FUTURE, WITH A MINIMAL FINANCIAL INVESTMENT

It has never been easier to transition your inventory to LED ellipsoids. In addition to the six lens tube configurations available through Martin, the ELP line fits common third-party lens tubes and accessories—which means you can save money by using your existing gel frames, gobo holders and rotators and lens tubes.

# ELP CLIP

COLOR LED ELLIPSOIDAL LIGHT FIXTURE – IP65 RATED



## OVERVIEW

Martin ELP CL IP (Color) LED ellipsoid fixtures deliver class-leading luminance, output and great color mixing from pastels to saturated colors. Ergonomic Danish engineering offers advances in lighting functionality that include the easy-to-use gear-based Fine Focus—an industry first—and on-board Fast Focus, which allows focusing of the fixture without the need of DMX data. ELP also offers 16-bit dimming with 4 selectable curves and 26 color presets that match industry-standard color filters.

ELP fixtures can be configured in black or white with one of four Martin fixed lens tubes (19°, 26°, 36° or 50° beam angles) or one of two Martin zoom lens tubes (15–30° or 25–50° beam angles). ELP fixtures are also compatible with third-party lens tubes and a wide range of accessories, including gel frames and gobos for flexibility in lighting design and inventory management.

The ELP CL IP is designed to withstand the elements in temporary outdoor environments, with an IP65 rating for water resistance and dust protection, and C3 corrosion resistance for improved durability.

Superior output, optics and quality, combined with unparalleled ease-of-use and convenience, make Martin ELP the leading LED ellipsoidal fixtures in their class.

## HIGHLIGHTS

- ¥ Impressive light output and CRI rating  
Class-leading 6,900 lumen output rating (High Output mode) and 90 CRI rating (High Quality mode)
- ¥ Revolutionary focus and functionality  
Industry's first gear-driven Fine Focus, Fast Focus for data-free focusing and more
- ¥ Compatible with universal accessories  
Use industry standard lens tubes, gel frames, gobo holders and rotators
- ¥ IP65 Rated  
Offers water resistance and complete dust protection for temporary outdoor applications

## KEY MESSAGES

### ADVANCED MARTIN OPTICS

Martin ELP ellipsoids feature optic assemblies designed in Denmark by the technology innovators behind MAC Encore, the leading LED moving light. The ELP is designed to maximize efficiency and deliver a flat field of illumination for smoother blending and mixing between fixtures.

### CUTTING-EDGE LED TECHNOLOGY

ELP CL IP offers an impressive 6,900 lumens and 85 CRI in High Output mode, and 5,900 lumens and 90 CRI in High Quality mode, with a color temperature of 6,000K (open white). ELP ellipsoids also offer flicker-free operation for consistent light output—on and off camera—and 16-bit dimming with 4 selectable curves.

### FOCUS ON FUNCTIONALITY

ELP takes a classic light fixture to new performance levels with a suite of innovative features. Our gear-based Fine Focus adjustment—an industry first—lets you lock focus exactly where you want it, instantly. There's no refocusing, no drifting

and no slipping. Our innovative Fast

Focus feature brings the fixture to full output for 60 seconds without data running to the fixture. Halation color correction removes atypical blue and brown halos when using Martin lens tubes. And with an IP65 rating and C3 corrosion resistance, ELP CL IP was designed to withstand operation in temporary outdoor environments.

### ERGONOMIC DESIGN

Danish engineering is all about efficiency and ergonomics, and the subtle details of ELP are no exception: We've placed the center of gravity as close to the yoke as possible, for more comfortable operation. And, we've placed tilt knobs out of the way of framing shutters, to allow quick, easy position adjustments.

### INVEST IN THE FUTURE, WITH A MINIMAL FINANCIAL INVESTMENT

It has never been easier to transition your inventory to LED ellipsoids. In addition to the six lens tube configurations available through Martin, the ELP line fits common third-party lens tubes and accessories which means you can save money by using your existing gel frames, gobo holders and rotators and lens tubes.

# ELP WW

## WARM WHITE LED ELLIPSOIDAL LIGHT FIXTURE



### HIGHLIGHTS

- ¥ Impressive light output  
Output rating of 7,000 lumens at 3000K
- ¥ Superior CRI rating  
Industry-leading CRI rating of 97
- ¥ Revolutionary focus and functionality  
Industry's first gear-driven Fine Focus, Fast Focus for data-free focusing and more
- ¥ Compatible with universal accessories  
Use industry standard lens tubes, gel frames, gobo holders and rotators

### OVERVIEW

Martin ELP WW (Warm White) LED ellipsoid fixtures deliver class-leading luminance, output and superb light quality. Ergonomic Danish engineering offers advances in lighting functionality that include the easy-to-use gear-based Fine Focus—an industry first—and on-board Fast Focus, which allows focusing of the fixture without the need of DMX data. ELP also offers 16-bit dimming with 4 selectable curves.

ELP fixtures can be configured in black or white with one of four Martin fixed lens tubes (19°, 26°, 36° or 50° beam angles) or one of two Martin zoom lens tubes (15–30° or 25–50° beam angles). ELP fixtures are also compatible with third-party lens tubes and a wide range of accessories, including gel frames and gobos for flexibility in lighting design and inventory management.

Superior output, optics and quality, combined with unparalleled ease-of-use and convenience, make Martin ELP the leading LED ellipsoidal fixtures in their class.

### KEY MESSAGES

#### ADVANCED MARTIN OPTICS

Martin ELP ellipsoids feature optic assemblies designed in Denmark by the technology innovators behind MAC Encore, the leading LED moving light. The ELP is designed to maximize efficiency and deliver a flat field of illumination for smoother blending and mixing between fixtures.

#### CUTTING-EDGE LED TECHNOLOGY

ELP WW delivers 7,000 lumens of output and an industry-leading 97 CRI at 3000K color temperature, for the truest color representation on any surface. ELP ellipsoids also offer flicker-free operation for consistent light output—on and off camera—and 16-bit dimming with 4 selectable curves.

#### FOCUS ON FUNCTIONALITY

ELP takes a classic light fixture to new performance levels with a suite of innovative features. Our gear-based Fine Focus adjustment—an industry first—lets you lock focus exactly where you want it, instantly.

There's no refocusing, no drifting and no slipping. Our innovative Fast Focus feature brings the fixture to full output for 60 seconds without data running to the fixture. Halation color correction removes atypical blue and brown halos when using Martin lens tubes.

#### ERGONOMIC DESIGN

Danish engineering is all about efficiency and ergonomics, and the subtle details of ELP are no exception: We've placed the center of gravity as close to the yoke as possible, for more comfortable operation. And, we've placed tilt knobs out of the way of framing shutters, to allow quick, easy position adjustments.

#### INVEST IN THE FUTURE, WITH A MINIMAL FINANCIAL INVESTMENT

It has never been easier to transition your inventory to LED ellipsoidals. In addition to the six lens tube configurations available through Martin, the ELP line fits common third-party lens tubes and accessories—which means you can save money by using your existing gel frames, gobo holders and rotators and lens tubes.

# ELP CL

## COLOR LED ELLIPSOIDAL LIGHT FIXTURE



### HIGHLIGHTS

- ¥ Impressive light output  
Class-leading output rating of 6,900 lumens (in High Output mode)
- ¥ Superior CRI rating  
CRI rating of 90 (in High Quality mode)
- ¥ Revolutionary focus and functionality  
Industry's first gear-driven Fine Focus, Fast Focus for data-free focusing and more
- ¥ Compatible with universal accessories  
Use industry standard lens tubes, gel frames, gobo holders and rotators

### OVERVIEW

Martin ELP CL (Color) LED ellipsoid fixtures deliver class-leading luminance, output and great color mixing from pastels to saturated colors. Ergonomic Danish engineering offers advances in lighting functionality that include the easy-to-use gear-based Fine Focus—an industry first—and on-board Fast Focus, which allows focusing of the fixture without the need of DMX data. ELP also offers 16-bit dimming with 4 selectable curves and 26 color presets that match industry-standard color filters.

ELP fixtures can be configured in black or white with one of four Martin fixed lens tubes (19°, 26°, 36° or 50° beam angles) or one of two Martin zoom lens tubes (15–30° or 25–50° beam angles). ELP fixtures are also compatible with third-party lens tubes and a wide range of accessories, including gel frames and gobos for flexibility in lighting design and inventory management.

Superior output, optics and quality, combined with unparalleled ease-of-use and convenience, make Martin ELP the leading LED ellipsoidal fixtures in their class.

### KEY MESSAGES

#### ADVANCED MARTIN OPTICS

Martin ELP ellipsoids feature optic assemblies designed in Denmark by the technology innovators behind MAC Encore, the leading LED moving light. The ELP is designed to maximize efficiency and deliver a flat field of illumination for smoother blending and mixing between fixtures.

#### CUTTING-EDGE LED TECHNOLOGY

ELP CL offers an impressive 6,900 lumens and 85 CRI in High Output mode, and 5,900 lumens and 90 CRI in High Quality mode, with a color temperature of 6,000K (open white). ELP ellipsoids also offer flicker-free operation for consistent light output—on and off camera—and 16-bit dimming with 4 selectable curves.

#### FOCUS ON FUNCTIONALITY

ELP takes a classic light fixture to new performance levels with a suite of innovative features. Our gear-based Fine Focus adjustment—an industry first—lets you lock focus exactly where you want it, instantly.

There's no refocusing, no drifting and no slipping. Our innovative Fast Focus feature brings the fixture to full output for 60 seconds without data running to the fixture. Halation color correction removes atypical blue and brown halos when using Martin lens tubes.

#### ERGONOMIC DESIGN

Danish engineering is all about efficiency and ergonomics, and the subtle details of ELP are no exception: We've placed the center of gravity as close to the yoke as possible, for more comfortable operation. And, we've placed tilt knobs out of the way of framing shutters, to allow quick, easy position adjustments.

#### INVEST IN THE FUTURE, WITH A MINIMAL FINANCIAL INVESTMENT

It has never been easier to transition your inventory to LED ellipsoidals. In addition to the six lens tube configurations available through Martin, the ELP line fits common third-party lens tubes and accessories—which means you can save money by using your existing gel frames, gobo holders and rotators and lens tubes.



# ERA 300 PROFILE

COMPACT LED MOVING HEAD WITH CMY COLOR MIXING AND ZOOM



The Martin ERA 300 Profile is a very compact profile fixture with an extremely efficient 260W white LED engine that produces a sharp gobo projection with a flat field and more output than typically associated with similar-sized and featured fixtures. This modern, everyday workhorse is designed to fit anywhere, is easy to handle and rig, takes up less truck space, and boasts full, professional features, including CMY color mixing and 1:2 zoom and 9,500 lumens of output. Additional features include electronic dimming and strobe, color wheel, and two layers of gobos, including rotating gobos, iris, rotating prism and pan/tilt. The electronic dimming ensures extremely fast strobing, instant intensity control and maintains a consistent flat field down to zero percent. Onboard CMY color mixing offers wide-ranging versatility from subtle pastels to deep, vibrant, colors, as well fast transitions and smooth fades. And, with 13 to 28 degrees of zoom, the ERA 300 Profile is perfect for various trim heights and is wide enough to ensure great coverage on smaller stages. The Martin ERA 300

Profile also delivers increased ROI with minimal maintenance. The steady, stable LED source eliminates worries of lamp aging, loss of output, shifts in color temperature, and fans sucking dirt through the optical path. And, the modular design makes accessing and maintenance extremely safe, quick, and easy. The ERA 300 Profile is built for the road and is ideal for small and mid-sized concert and touring, live TV productions, corporate shows, cruise line and houses of worship.

## KEY MESSAGES

### EVERYDAY, COMPACT WORKHORSE WITH BIG IMPACT

Great for smaller, mid-sized productions, the ERA 300 Profile is designed to fit anywhere, be easy to handle and rig, and take up less truck space. Boasting full, professional features, this fixture bundles 9,500 lumens of output; electronic dimming and strobe; CMY color mixing; color wheel; two layers of gobos, including rotating gobos; iris; zoom; focus; rotating prism; and pan and tilt.

### 260 WATT LED LIGHT SOURCE

Featured with an extremely efficient 260 watt and 20,000 lumen LED light source, the ERA 300 Profile delivers more output than typically associated with similar-sized and featured fixtures. Fully electronic dimming ensures extremely fast strobing, instant intensity control, and a flat, consistent field that can be maintained down to zero percent.

### CMY COLOR MIXING

Onboard CMY color mixing offers wide-ranging versatility from subtle pastels to deep, vibrant, colors, as well fast transitions and smooth fades. With the additional 9 slot color wheel, the ERA 300 Profile also produces nice color splits and fast color bumps, as well as extending the overall color gamut and brightness of certain colors. The color wheel also features a CTO filter to obtain a 3000K tungsten color temperature.

### 1:2 ZOOM

With a 13 to 28 degrees zoom, the ERA 300 Profile works great on various trim heights and the 28 degrees wide angle delivers enough spread for a great coverage on smaller stages. Zooming is fast and accurate and maintains a high output throughout the range.

# ERA 400 Performance CLD

300W COLD LED BASED PROFILE WITH FRAMING AND CMY COLOR MIXING



Designed to fulfill the demand for a bright, compact, tour-worthy moving head, the Martin ERA 400 Performance CLD combines a feature-loaded and rugged, yet cost-efficient profile for entertainment and rental applications.

It features a highly efficient 300W cold white LED engine that produces a bright, sharp 6,500K gobo projection with a flat field. Additional key benefits include 1:3 zoom, electronic dimming and strobe, full CMY color mixing and separate color wheel, iris for beam adjustment and fixed and rotating gobo wheels, loaded with user-favorite gobos from the renowned Martin MAC range that include a wide variety of effects, especially when combined with the included rotating prism.

Whether being used for small and mid-sized concert and touring, live TV productions, corporate shows, cruise line or houses of worship, the Martin ERA 400 Performance CLD is ideal for a long list of scenarios, requiring a truly versatile LED profile that offers near limitless design and usage potential.

## KEY MESSAGES

### FULL FRAMING SYSTEM

The full curtain framing system allows each of the four framing blades to cross the entire beam independently for full blackout. In addition, the entire framing module can rotate  $\pm 45$  degrees, allowing for precise and accurate image projection for the desired stage area. When fully focused, gobos can be framed with a soft edge, enabling designers a high degree of flexibility in the lighting design.

### 300 WATT LED LIGHT SOURCE

With an efficient 300 watt light source, the ERA 400 delivers more output than similar-sized fixtures. Fully electronic dimming ensures extremely fast strobing, instant intensity control, and a flat, consistent field that can be maintained down to zero percent.

### CMY COLOR MIXING

Offers subtle pastels to vibrant colors, as well fast transitions and smooth fades. The color wheel produces nice color splits, fast color bumps & extends overall color gamut and brightness. Also features a CTO filter to obtain a 3000K tungsten color temperature.

### 1:3 ZOOM RANGE

With 10 to 30 degrees of zoom, the ERA 400 Performance works great on various trim heights and the 30 degree wide angle delivers enough spread for a great coverage on smaller stages. Zooming is fast and accurate and maintains a high output throughout the range.

### COMPACT AND DESIGNED FOR THE ROAD

The ERA 400 is a very compact and low weight for its class making it easy to handle and rig. The modular design makes accessing & replacing of effects safe, quick, and easy – modules can be swapped in less than a minute.

# ERA 500 Hybrid IP

370W HYBRID OUTDOOR IP65-RATED BEAM, SPOT AND WASH FIXTURE



The Martin ERA 500 Hybrid IP is a super versatile, high performance, full featured, outdoor IP65-rated moving head work horse fixture that combines a beam, spot, and wash in a single fixture. It features high output, 1:20 zoom range, CMY color mixing, overlaying prism effects, and a compact design.

With durable engineering and serviceability, it is an ideal fixture to support the rigors of today's rental market. It's outdoor-rating makes it perfect for just about any outdoor weather conditions, even music festivals where it can be sitting outside temporarily for extended periods of time.

The product is ideal for supporting small- to mid-sized productions such as concerts, tours and corporate applications.

## KEY MESSAGES

### SUPERIOR LAMP TECHNOLOGY

The ERA 500 Hybrid IP features an efficient optical system that pushes 22,000 lumens from a 370W short arc lamp with an extended lamp life of 6,000 hours. The high output, value-driven design supports users who require a true "Beam" Hybrid for outdoor use but without the cost and inconvenience of short term lamp replacement.

### FULLY OUTDOOR RATED

The ERA 500 Hybrid IP's IP65 ingress protection rating allows the user to install the fixture outdoors for temporary installations and events where inclement weather can cause problems with rigging and operation of standard indoor fixtures. The fixture further holds a C3-M corrosion rating and an IK07 vandalism rating, for high durability and peace of mind.

### GREAT COLOR PALETTE

The CMY color mixing offers subtle pastels to vibrant colors, as well as fast transitions and smooth fades. The color wheel produces nice color splits, fast color bumps and extends overall color gamut and brightness. The color wheel also features CTO, 1/2 CTO and 1/4 CTO correction filters for perfect color temperatures matching in TV shows.

### ARRAY OF MID-AIR EFFECTS

The ERA 500 Hybrid IP features two prisms with the ability to overlay one over another. This allows for a huge array of mid-air effects from the industry standard multi-faceted circular look to the popular linear look, overlaying both linear and circular can create even more dynamic looks on camera or on stage.

### EXTENSIVE ZOOM RANGE

The ERA 500 Hybrid IP features a great 1:20 zoom range functional in Beam, Spot and Wash mode, allowing for a true all-in-one fixture to be used in a great variety of indoor and outdoor events and shows.

# ERA 600 Performance

550W LED BASED PROFILE WITH FRAMING AND CMY COLOR MIXING



Designed to fulfill the demand for a bright, compact, tour-worthy moving head, the Martin ERA 600 Performance combines a feature-loaded and rugged, yet cost-efficient profile for entertainment and rental applications.

It features a highly efficient 550W white LED engine that produces a bright, sharp 6,500K image projection with a flat field. Additional key benefits include 1:8 zoom, electronic dimming and strobe, full CMY color mixing and separate color wheel, variable color temperature control, animation wheel, iris for beam adjustment and fixed and rotating gobo wheels, loaded with user-favorite gobos from the renowned Martin MAC range that include a wide variety of effects, especially when combined with the two included rotating prisms and heavy frost filter.

Perfect for larger stage and live productions, the Martin ERA 600 Performance is ideal for a long list of scenarios, requiring a bright, yet truly versatile LED profile that offers near limitless design and usage potential.

## KEY MESSAGES

### FULL FRAMING SYSTEM

The full curtain framing system allows each of the four framing blades to cross the entire beam independently for full blackout. In addition, the entire framing module can rotate 120 degrees, allowing for precise and accurate image projection for the desired stage area. When fully focused, gobos can be framed with a soft edge, enabling designers a high degree of flexibility in the lighting design.

### 550 WATT LED LIGHT SOURCE

With an efficient 550 watt light source, the ERA 600 Performance delivers more output than similar-sized fixtures. Fully electronic dimming ensures extremely fast strobing, instant intensity control, and a flat, consistent field that can be maintained down to zero percent.

### GREAT COLOR PALETTE

Precise color temperature control with variable color temperature correction (CTO). Vibrant CMY color mixing from light and smooth pastels to rich, saturated primaries. The color wheel produces nice color splits, fast color bumps & extends overall color gamut and brightness.

### 1:8 ZOOM RANGE

With 6 to 45 degrees of zoom, the ERA 600 Performance works great even on larger trim heights. Zooming is fast and accurate and maintains a high output throughout the range.

### COMPACT AND DESIGNED FOR THE ROAD

The ERA 600 Performance is a very compact and low weight for its class making it easy to handle and rig. The modular design makes accessing & replacing of effects safe, quick, and easy – modules can be swapped in less than a minute.

# ERA 600 PROFILE

550W LED FULL FEATURED PROFILE MOVING HEAD WITH ENHANCED GOBO LOAD-OUT AIMED FOR LARGE-STAGE PRODUCTIONS



Designed to fulfill the demand for a bright, compact, tour-worthy moving head, the Martin ERA 600 Profile combines a feature-loaded and rugged, yet cost-efficient profile for entertainment and rental applications.

It features a highly efficient 550W white LED engine that produces a bright, sharp 6,500K image projection with a flat field. Additional key benefits include 1:8 zoom, electronic dimming and strobe, full CMY color mixing and separate color wheel, variable color temperature control, animation wheel, iris for beam adjustment and fixed and rotating gobo wheels, loaded with user-favorite gobos from the renowned Martin MAC range that includes a wide variety of effects, especially when combined with the two included rotating prisms and heavy frostfilter.

Perfect for larger stage and live productions, the Martin ERA 600 Profile is ideal for a long list of scenarios, requiring a bright, yet truly versatile LED profile that offers near limitless design and usage potential.

## KEY MESSAGES

### 550 WATT LED LIGHT SOURCE

With an efficient 550 watt light source, the ERA 600 Profile delivers more output than similar-sized fixtures. Fully electronic dimming ensures extremely fast strobing, instant intensity control, and a flat, consistent field that can be maintained down to zero percent.

### GREAT COLOR PALETTE

Precise color temperature control with variable color temperature correction (CTO). Vibrant CMY color mixing from light and smooth pastels to rich, saturated primaries. The color wheel produces nice color splits, fast color bumps and extends overall color gamut and brightness.

### 1:8 ZOOM RANGE

With 6 to 45 degrees of zoom, the ERA 600 Profile works great even on larger trim heights. Zooming is fast and accurate and maintains a high output throughout the range.

### COMPACT AND DESIGNED FOR THE ROAD

The ERA 600 Performance is a very compact and low weight for its class making it easy to handle and rig. The modular design makes accessing and replacing of effects safe, quick, and easy - modules can be swapped in less than a minute.

# ERA 800 Performance

800W LED BASED PROFILE WITH FRAMING AND CMY COLOR MIXING



Designed to fulfill the demand for an ultra-bright, compact, tour-worthy moving head, the Martin ERA 800 Performance combines a feature-loaded and rugged, yet cost-efficient profile for entertainment and rental applications.

It features a highly efficient, super-bright 800W white LED engine that produces a bright, sharp 6,500K gobo projection with a flat field. Additional key benefits include 1:8 zoom, electronic dimming and strobe, full CMY color mixing and separate color wheel, variable color temperature control, animation wheel, iris for beam adjustment and fixed and rotating gobo wheels, loaded with user-favorite gobos from the renowned Martin MAC range that include a wide variety of effects, especially when combined with the two included rotating prisms and soft and heavy frost filters.

Perfect for big, stadium-sized stage and live productions, the Martin ERA 800 Performance is ideal for a long list of scenarios, requiring an extremely bright, yet truly versatile LED profile that offers near limitless design and usage potential.

## KEY MESSAGES

### FULL FRAMING SYSTEM

The full curtain framing system allows each of the four framing blades to cross the entire beam independently for full blackout. In addition, the entire framing module can rotate  $\pm 60$  degrees, allowing for precise and accurate image projection for the desired stage area. When fully focused, gobos can be framed with a soft edge, enabling designers a high degree of flexibility in the lighting design.

### 800 WATT LED LIGHT SOURCE

With an efficient 800 watt light source, the ERA 800 Performance delivers more output than similar-sized fixtures. Fully electronic dimming ensures extremely fast strobing, instant intensity control, and a flat, consistent field that can be maintained down to zero percent.

### GREAT COLOR PALETTE

Precise color temperature control with variable color temperature correction (CTO). Vibrant CMY color mixing from light and smooth pastels to rich, saturated primaries. The color wheel produces nice color splits, fast color bumps & extends overall color gamut and brightness.

### 1:8 ZOOM RANGE

With 7 to 56 degrees of zoom, the ERA 800 Performance works great even on larger trim heights. Zooming is fast and accurate and maintains a high output throughout the range.

### COMPACT AND DESIGNED FOR THE ROAD

The ERA 800 Performance is a very compact and low weight for its class making it easy to handle and rig. The modular design makes accessing & replacing of effects safe, quick, and easy – modules can be swapped in less than a minute.

# ERA 800 PROFILE

800W LED FULL FEATURED PROFILE MOVING HEAD WITH ENHANCED GOBO LOAD-OUT AIMED FOR STADIUM-CLASS PRODUCTIONS



Designed to fulfill the demand for an ultra-bright, compact, tour-worthy moving head, the Martin ERA 800 Profile combines a feature-loaded and rugged, yet cost-efficient profile for entertainment and rental applications.

It features a highly efficient, super-bright 800W white LED engine that produces a bright, sharp 6,500K gobo projection with a flat field. Additional key benefits include 1:8 zoom, electronic dimming and strobe, full CMY color mixing and separate color wheel, variable color temperature control, animation wheel, iris for beam adjustment and fixed and rotating gobo wheels, loaded with user-favorite gobos from the renowned Martin MAC range that includes a wide variety of effects, especially when combined with the two included rotating prisms and soft and heavy frost filters.

Perfect for big, stadium-sized stage and live productions, the Martin ERA 800 Profile is ideal for a long list of scenarios, requiring an extremely bright, yet truly versatile LED profile that offers near limitless design and usage potential.

## KEY MESSAGES

### 800 WATT LED LIGHT SOURCE

With an efficient 800 watt light source, the ERA 800 Profile delivers more output than similar-sized fixtures. Fully electronic dimming ensures extremely fast strobing, instant intensity control, and a flat, consistent field that can be maintained down to zero percent.

### GREAT COLOR PALETTE

Precise color temperature control with variable color temperature correction (CTO). Vibrant CMY color mixing from light and smooth pastels to rich, saturated primaries. The color wheel produces nice color splits, fast color bumps and extends overall color gamut and brightness.

### 1:8 ZOOM RANGE

With 7 to 56 degrees of zoom, the ERA 800 Profile works great even on larger trim heights. Zooming is fast and accurate and maintains a high output throughout the range.

### COMPACT AND DESIGNED FOR THE ROAD

The ERA 800 Profile is a very compact and low weight for its class making it easy to handle and rig. The modular design makes accessing and replacing of effects safe, quick, and easy—modules can be swapped in less than a minute.

# MAC AURA™ PXL

MULTI-SOURCE WASH LIGHT



The Martin MAC Aura PXL adds to the industry standard line of Martin wash lights with multi-lens and Aura backlight technology. Within the MAC family, it is positioned to support applications between the MAC Aura XB and MAC Quantum Wash fixtures and incorporates a newly designed front lens that is less "busy" with fewer, but bigger "bubbles", compared to the MAC Quantum Wash. This allowing for a tighter, higher intensity, narrow beam as well as beautiful wide wash fields.

This fixture is also an industry first wash light to feature individual pixel control down to every single Aura backlight LED, which apart from being a versatile workhorse wash light also makes the MAC Aura PXL the most creative fixture in the market.

The compact size and low weight, trusted Martin build quality and feature set, and simple and clever setup and control options make the MAC Aura PXL ideal for rental customers and lighting designers working in concert/touring, TV shows and corporate, as well as customers supporting the high-end nightclub market.

## KEY MESSAGES

### TRUE WASH LIGHT WORKHORSE

From a tight, high intensity, narrow beam to beautiful wash fields, incorporated into a compact and lightweight package, the MAC Aura PXL suits every application.

### BUILT FOR PIXEL MAPPING

With an all solid state color mixing system, instant color and intensity response, 19 individually controlled main beam pixels and also 141 individually controlled Aura backlight pixels, the MAC Aura PXL is a great choice for pixel-mapping. The color palette can also be set to fully match the color space of any other P3-driven product in the rig, allowing the fixture to fit in seamlessly.

### BRIGHT, VIBRANT COLORS

The RGBW system delivers very vibrant colors with a brightness only expected from much bigger fixtures. The calibrated color system excels on subtle pastels and white tones, making any MAC Aura PXL in the rig match on the color point when they must.

### P3 INCORPORATED

On top of DMX, Art-Net and sACN, all features of the fixture can be controlled by Martin's P3 protocol for setup and programming and allows a rig of fixtures to deliver cohesive content that blends together with video content on panels or creative LED products. You can even blend seamlessly between console and media input sources via the P3 mix channel.

HARMAN PROFESSIONAL INC. • 8500 BALBOA BOULEVARD • NORTHRIDGE • CA 91329 • USA • +1 818 893 8411

©2020 HARMAN Professional. All rights reserved. Martin® is a registered trademark of HARMAN Professional Inc. registered in the United States and/or other countries.

Features, specifications, and appearance are subject to change without notice. Rev. 202006

[www.martin.com](http://www.martin.com)

**Martin**  
by HARMAN





GALLERY



# MAC Aura XB

The MAC Aura XB takes an award-winning, innovative, compact LED wash light to the next level, incorporating many new features first introduced with the MAC Quantum Wash™. Not only does the MAC Aura XB offer additional brightness, it also features a new superior color mixing system and an optimized lens design for tighter beams and more even washes. Martin's unique and patented Eye-candy Aura Effect™ is also part of the package.

Super bright single lens wash with fully premixed color

Compact design and low weight

High efficiency, low power consumption, long service life

FEATURES

- Super-bright single-lens wash with fully premixed color - Uniform shades
- Broad color palette, RGBW color mixing - Eye-candy Aura Effect™
- Built-in FX engine - Rapid movement
- 10 to 60° uniform zoom
- 6000 Lumens output
- Compact, low weight design (6.5 kg)
- High efficiency, low power consumption, long lifetime



GALLERY



# MAC Aura

The MAC Aura is an award-winning wash light that lighting designers have turned to the world over due to its versatility as a powerful beam and wash luminaire of the highest caliber. The result of out-of-the-box creative thinking, it is the first LED moving head wash light to combine multicolor beam LEDs with a backlight LED array that takes the synthetic look out of LED wash lights.

Single-lens wash with fully premixed color

Broad color palette, RGBW color mixing

Eye-candy Aura Effects™

FEATURES

- Single-lens wash with fully premixed color - Uniform shades
- Broad color palette, RGBW color mixing - Eye-candy Aura Effects™
- Built-in FX engine - Rapid movement - Compact, low weight design (5.6 kg)
- 11 to 58° zoom - 3850 Lumens output
- High efficiency, low power consumption, long lifetime

# MAC ALLURE™ PROFILE

ONE BEAM. 7 SEGMENTS. LIMITLESS COLORS.



The MAC Allure™ Profile features a novel RGBW light engine with unique 7-segmented beam control. With instant color control and pixelated beam, the MAC Allure Profile enables dynamic projection and mid-air effects, previously not possible. The proprietary light engine sets new standards in compactness and efficiency, previously associated with larger, costlier fixtures. To ease programming and content creation, this is also the first lighting fixture to incorporate Martin's P3 control. The pixelated beam can still be controlled or pixel-mapped via DMX and Art-Net protocols, however, switching or cross-fading to P3 or vice versa is now instantly possible. Designed to support rental and install clients, the MAC Allure Profile is ideal for concert/touring, TV, corporate, houses of worship, concert venues, nightclubs, and cruise ships.

## KEY MESSAGES

### FIRST PIXELATED SPOT

The light and color engine is divided into seven full color pixels. Pixels can be focused on projection as well as in the beam for aerial effects. You have full color and intensity control over each pixel via DMX, or you can create effects effortlessly via the fixture's effects engine.

### P3 INCORPORATED

On top of DMX, Art-Net and sACN, the MAC Allure Profile can be controlled via P3. This allows a rig of multiple fixtures to deliver a cohesive look that blends with video content on panels or creative LED products. With this system, there is only a single data feed to the product and the operator can switch between normal lighting and P3 control and even cross fade between the two.

### BUILT FOR PIXEL MAPPING

With an all solid state color mixing system, instant color and intensity response, 7-pixel beam technology, P3 control, and calibrated colors, the MAC Allure Profile is made for pixel mapping. The color palette can also be set to fully match the color space of any other P3-driven product in the rig, allowing the MAC Allure Profile to fit in seamlessly for perfect color matching looks. With P3 control on board you no longer have to worry about counting fixtures, DMX universes and channels and can spend your efforts on the exciting and creative side of the production.

### BRIGHT VIBRANT COLORS

The calibrated RGBW system delivers very vibrant colors with a brightness only expected from much bigger fixtures. The color calibrated system excels on subtle pastels and white tones making any MAC Allure Profile in the rig match the color point when they must.

### BROADCAST SAFE

The MAC Allure Profile LED drivers run the light engine at high and precise refresh rates securing that there is no flicker or banding on any broadcast application.

### DOWNSIZED TECHNOLOGY IS OUR TRADEMARK

The Martin MAC family is renowned for compact moving lights. The MAC Allure Profile saves space in truck, transit and truss, fitting nicely into smaller sets and spaces. With its compact design at a weight of just 17.6 kg (38.8 lbs.), the MAC Allure Profile is extremely easy to handle and reduces the problem of truss loading constraints. The fixture typically fits into four unit flight cases.

HARMAN PROFESSIONAL INC. • 8500 BALBOA BOULEVARD • NORTHRIDGE • CA 91329 • USA • +1 818 893 8411

©2019 HARMAN Professional. All rights reserved. Martin® and Allure™ are trademarks of HARMAN Professional Inc. registered in the United States and/or other countries. Features, specifications, and appearance are subject to change without notice. Rev. C

[www.martin.com](http://www.martin.com)

**Martin**  
by HARMAN

# MAC ALLURE™ WASH PC

THE SHAPE OF THINGS TO COME.



The MAC Allure Wash PC features a novel RGBW light engine with unique 7-segmented beam control. With instant color control and pixelated beam, the MAC Allure Wash PC enables dynamic diffused projection and mid-air effects, previously not possible. The proprietary light engine sets new standards in compactness and efficiency, previously associated with larger, costlier fixtures. To ease programming and content creation, this is also the first lighting fixture to incorporate Martin's P3 control. The pixelated beam can still be controlled or pixel-mapped via DMX and Art-Net protocols, however, switching or cross-fading to P3 or vice versa is now instantly possible. Designed to support rental and install clients, the MAC Allure Wash PC is ideal for concert/touring, TV, corporate, houses of worship, concert venues, nightclubs, and cruise ships.

## KEY MESSAGES

### NEW BREED OF PIXELATED WASH LIGHT

The light & color engine is divided into seven full color pixels. Pixels can be focused on projection or in the beam for aerial effects. You have full color & intensity control over each pixel via DMX, or create effects via the fixture's effects engine.

### P3 INCORPORATED

On top of DMX, Art-Net and sACN, the MAC Allure Wash PC can be controlled via P3. This allows a rig of multiple fixtures to deliver a cohesive look that blends with video content on panels or creative LED products. With this system, there is only a single data feed to the product and the operator can switch between normal lighting and P3 control and even cross fade between the two.

### BRIGHT VIBRANT COLORS

The calibrated RGBW system delivers very vibrant colors with a brightness only expected from much bigger fixtures. The color calibrated system excels on subtle pastels and white tones making any MAC Allure Wash PC in the rig match the color point when they must.

### BUILT FOR PIXEL MAPPING

With an all solid state color mixing system, instant color and intensity response, 7-pixel beam technology, P3 control, and calibrated colors, the MAC Allure Wash PC is made for pixel mapping. The color palette can also be set to fully match the color space of any other P3-driven product in the rig, allowing the MAC Allure Wash PC to fit in seamlessly for perfect color matching looks. With P3 control on board you no longer have to worry about counting fixtures, DMX universes and channels and can spend your efforts on the exciting and creative side of the production.

### BROADCAST SAFE

The MAC Allure Wash PC LED drivers run the light engine at high and precise refresh rates securing that there is no flicker or banding on any broadcast application.

### DISCRETE LENS LOOK

Unlike most LED Wash Lights, the MAC Allure Wash PC incorporates a true single lens design with a less aggressive look and without any horizontal light spill.

# MAC QUANTUM™ Profile



## MAC Quantum Profile

**This extremely bright LED profile fixture combines top-quality white light with a fast, smooth CMY color mixing system and crisp gobo projection on surfaces as well as mid-air.**

**With all this and the new Animation™ FX system that allows never-before seen beam animations, the market is now finally seeing the first real 700/800 W discharge lamp replacement in a profile fixture that effectively harnesses cutting-edge LED technology.**

First real alternative to a 700/800 watt HID fixture

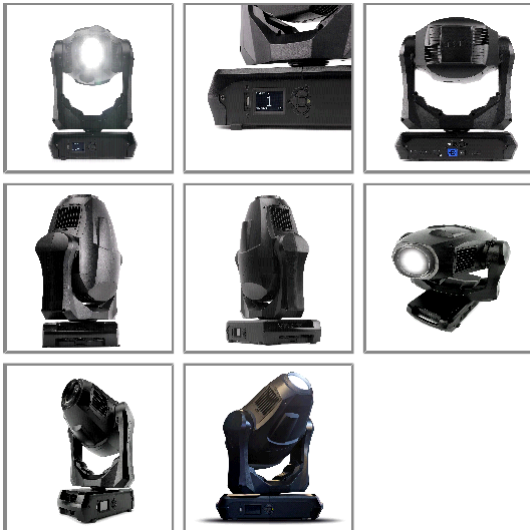
Flat field, crisp image, high contrast

Full feature set including CMY color mixing and 1:3 zoom

GALLERY

### FEATURES

- First real alternative to a 700/800 watt HID fixture
- Flat field, crisp image, high contrast
- Full feature set including CMY color mixing and 1:3 zoom
- Very low weight and compact design
- Super high-speed movements and effects
- Consistent photometric performance via latest LED technology



# MAC QUANTUM™ Wash



GALLERY

## MAC Quantum Wash

**The MAC Quantum Wash features tight beams, beautiful wash fields, a market-leading color palette, and uniform mixing that combines to accommodate the most demanding applications, offering brightness and perfection. Combining an impressive 750 watt of RGBW LED power with Martin's market leading optical system ensures that the 1:5 zoom on the MAC Quantum Wash operates with maximum output and superior performance.**

RGBW LED color mixing with unique and expressive Colorganics™ system for superior default white and deep saturated colors

1:5 zoom for tight beams and even washes

Beam twister effects: Rotating front lens for stunning mid-air and projection effects

### FEATURES

- Bright and perfect RGBW LED wash light for demanding applications
- Quick 1:5 zoom for tight beams and even washes
- Unique and expressive Colorganics™ system
- Highly efficient optical system
- Eye-candy Aura Effect™
- Beamtwister effects via rotating front lens
- Very low weight and compact design
- Super high-speed movements and effects



# MACENCORE™ PERFORMANCE

3000 K WARM LED MOVING HEAD | 6000 K COLD LED MOVING HEAD

## The new, whisper-silent benchmark in performance lighting

MAC Encore Performance integrates cutting-edge LED technology with a proprietary and innovative light engine carefully engineered to generate pristine, full spectrum light with ultra-high color rendition. The feature-packed moving head comes in two dedicated color temperature variants: MAC Encore Performance WRM for unparalleled, 3000 K warm incandescent emulation and MAC Encore Performance CLD for crisp, 6000 K neutral daylight, all housed in a cleverly cooled and packed optical design.

## Unparalleled light quality

Full-featured, next-generation LED moving head that delivers light quality and consistent performance levels never before seen in an LED based stage lighting unit.

## Super silent

Stealth cooling and silent effects operation make this the quietest moving head of its class.

## Best size/weight/performance ratio

Lightest-in-class, completely redesigned frame with truck-friendly dimensions offers fast rigging and cost-effective transportation.



## KEY MESSAGES

### NEW LED TECHNOLOGY

MAC Encore Performance is designed for real life applications, and the 3000K WRM version is the first LED engine to present a true challenge to the output quality of incandescent fixtures. The pure white 3000 K CCT (WRM) and 6000 K CCT (CLD) offer the most comprehensive spectrum available to date in a white light, LED source, moving head. High CRI, TM-30 and R9 values, ensure that skin tones, costumes, set pieces and more will render their true colors naturally in live productions and flicker-free on camera due to fast LED refresh rates that are compatible with TV and film camera shutter speeds.

### WHISPER-SILENT

MAC Encore Performance will make an immediate impression on you by what's not there; it is the most silent, hard edge moving head we've ever

built. All motorized effects operations—cooling fans, framing shutters, iris, zoom, pan and tilt—are engineered for applications where strict noise levels are a necessity. Even while running at maximum operation mode, MAC Encore Performance is still a stealth operator.

### STURDY, LIGHTWEIGHT DESIGN

With its best-in-class compact design and premium build-quality, MAC Encore Performance lives up to Martin's four-proven standards. Its slick form factor offers the highest lumen per kg/lb ratio of its class. Combined, you get the lightest and finest fixture on the market (31 kg/68 lbs.) for applications where ultimate light quality is key and where truck, rig and warehouse space are limited.

# MAC ENCORE™ WASH

3,000 K WARM LED MOVING HEAD | 6,000 K COLD LED MOVING HEAD

## The new, whisper-silent benchmark in wash lighting

Designed to produce rich color and premium white light in a wide variety of applications where light quality is critical, the MAC Encore Wash is available in two dedicated color temperature variants: WRM for unparalleled, 3,000 K warm incandescent emulation and CLD for crisp, 6,000 K neutral daylight, all housed in a cleverly cooled and packed optical design. The WRM variant is a perfect replacement for the much-loved, discontinued MAC TW1, and the CLD variant is an LED-based alternative to the MAC Viper Wash DX. Both variants can also be used as modern replacements for generic fixtures like tungsten or HMI based Fresnel fixtures, with the additional benefit of color mixing and movement.

## Unparalleled light quality

Full-featured, next-generation LED moving head that delivers light quality and consistent performance levels never before seen in an LED based stage lighting unit.

## Super silent

Stealth cooling and silent effects operation make this the quietest moving head of its class.

## Best size/weight/performance ratio

Lightest-in-class, completely redesigned frame with truck-friendly dimensions offers fast rigging and cost-effective transportation.



## KEY MESSAGES

### NEW LED TECHNOLOGY

MAC Encore Wash is designed for real life applications, and the 3,000 K WRM version, first introduced in MAC Encore Performance, presents a true challenge to the output quality of incandescent fixtures. The pure white 3,000K CCT (WRM) and 6,000K CCT (CLD) offer the most comprehensive spectrum available to date in a white light, LED source moving head. High CRI, TM-30 and R9 values ensure that skin tones, costumes, set pieces and more will render their true colors naturally in live productions and flicker-free on camera due to fast LED refresh rates that are compatible with TV and film camera shutter speeds.

### WHISPER-SILENT

MAC Encore Wash will make an immediate impression on you by what's not there; it is the most silent, soft edge moving head we've ever built.

All motorized effects operations—cooling fans, barndoors, iris, zoom, pan and tilt—are engineered for applications where strict noise levels are a necessity. Even while running at maximum operation mode, MAC Encore Wash is still a stealth operator.

### STURDY, LIGHTWEIGHT DESIGN

With its best-in-class compact design and premium build-quality, MAC Encore Wash lives up to Martin's tour-proven standards. Its slick form factor offers the highest lumen per kg/lb ratio of its class. Combined, you get the lightest and finest fixture on the market (28.5 kg/62.9 lbs.) for applications where ultimate light quality is key and where truck, rig and warehouse space are limited.

# MAC ULTRA PERFORMANCE

1150 W HIGH OUTPUT LED MOVING HEAD PROFILE WITH FRAMING



The MAC Ultra Performance has raised the bar for extremely bright moving lights and features benchmark output across the zoom range, a true next generation framing system, higher definition optics and astoundingly low noise levels.

Built to support the biggest live events, this powerful workhorse is based on our all new 1150 W, 6000 K proprietary LED light engine and the fixture pushes an incredible 46,500 lumens in projection. The 50,000+ hour light engine also provides high resolution dimming, strobing and Martin's unique Animotion effect.

A 1:7 zoom-range and precision focus-control is provided from the refined optical system. The extensive feature package includes uniform color mixing, variable CTO, additional color and spectral correction filters, Martin's innovative Extended Framing system, two layers of rotating gobos, full function animation wheel, iris, frost and prism effects, and truly responsive and accurate pan and tilt. And, these features are all packed into a compact, sturdy and legendary Martin design.

The MAC Ultra Performance is perfect for a wide range of concert and touring productions but is equally applicable for noise-sensitive broadcast and theater stage lighting applications. Simply put, when it comes to workhorse fixtures that push the boundaries of output and performance execution, the MAC Ultra Performance stands boldly in a class all its own.

## KEY MESSAGES

### INCREDIBLE LUMEN OUTPUT

The MAC Ultra Performance produces an incredible 46,500 projection lumens. With our tailor-made light engine and optics designed as a single unified system, MAC Ultra excels on keeping output across the zoom range. With high luminous flux and intensity at narrow zoom angles, MAC Ultra delivers the punch needed for the longest throws and highest trims - no stage or venue is too big for MAC Ultra Performance.

### SEEING IS BELIEVING

Our proprietary LED light engine is the foundation for MAC Ultra visual quality, built around the very latest technology to meet ever-stretched performance requirements. Our engine not only provides impressive metrics, but most importantly is more pleasing to the human eye. With higher red content and 6000 K color temperature for better daylight

balance, it delivers richer, more vivid colors and more natural skin-tones.

### VISUAL EXCELLENCE FOR LIFE

MAC Ultra was designed to not only deliver best-in-class output and quality in its first hour of use, but throughout its product life. The minimum LED lifetime exceeds 50,000 hours and the engine delivers over 90 percent of its initial output after 20,000 hours of full output. In real-world applications, this equals rock-solid performance and stability. Our engineering team has achieved these results through a sophisticated cooling system and by never driving the 1680 W LED package at more than 70 percent of its maximum rating. This combination ensures visual excellence and peace of mind throughout the life of the product.



# MAC ULTRA WASH

1150 W HIGH OUTPUT LED MOVING HEAD WASH



The MAC Ultra Wash is a colossal return to everything that an incredible wash light should be. Pure and simple in concept, it's a bold, no-nonsense workhorse and the brightest wash we've ever developed. Via its 1150 W, 6000 K proprietary LED light engine, the MAC Ultra Wash delivers a jaw-dropping 63,500 lumens from a 220 mm front lens and features incredibly fast 1:10 zoom range.

Its 50,000+ hour light engine is the latest in a long line of Martin feats of innovation. No matter what the application, you can reliably count on consistent quality of light and output --show after show for many years to come. The MAC Ultra Wash also includes a powerful feature set, including uniform color mixing, variable CTO, additional color and spectral correction filters, motorized frost for a softer field, high resolution dimming and strobing.

Ideal for touring, concerts, TV shows and performing arts, the MAC Ultra Wash supports the broader production market all the way up to the most demanding stage lighting events. Martin set the standard for managing the ratio of weight, size, and power and the MAC Ultra Wash surges ahead with even superior performance.

When it comes to delivering drop-dead wash light performance and workhorse reliability, nothing comes remotely close. MAC Ultra Wash exceeds the boundaries of design as an undeniable, class-leading fixture that sets a steep bar on wash light innovation.

## KEY MESSAGES

### MARTIN'S BRIGHTEST WASH LIGHT

The MAC Ultra Wash pushes a phenomenal 63,500 lumens of output from its mighty 220 mm front lens. With our tailor-made light engine and optics designed as one unified system, MAC Ultra Wash excels on keeping output across the zoom range, resulting in an ever-bright wash field. With high luminous flux and intensity at narrow zoom angles, MAC Ultra Wash delivers the punch needed for the longest throws and highest trims - no stage or venue is too big for MAC Ultra Wash.

### SEEING IS BELIEVING

Our proprietary LED light engine is the foundation for MAC Ultra visual quality, built around the very latest technology to meet ever-stretched performance requirements. Our engine not only provides impressive metrics, but most importantly is more pleasing to the human eye. With

higher red content and 6000 K color temperature for better daylight balance, it delivers richer, more vivid colors and more natural skin-tones.

### VISUAL EXCELLENCE FOR LIFE

MAC Ultra was designed to not only deliver best-in-class output and quality in its first hour of use, but throughout its product lifetime. The minimum LED lifetime exceeds 50,000 hours and the engine delivers over 90 percent of its initial output after 20,000 hours of full output. In real-world applications, this equals rock-solid performance and stability. Our engineering team has achieved these results through a sophisticated cooling system and by never driving the 1680 W LED package at more than 70 percent of its maximum rating. This combination ensures visual excellence and peace of mind throughout the life of the product.

# MAC VIPER™ AirFX

## MAC Viper AirFX



**Both flexible and efficient, the MAC Viper AirFX is a new concept that combines hard-edge, mid-air effects and a beautiful wash field in one luminaire. Featuring a great selection of all-new gobo designs, hard-edge effects remain stunning across the fixture's entire 11 - 58° zoom range. Capable of snapping or fading into a wash light at any point, a unique and highly efficient optical system means the MAC Viper AirFX can offer the features of a profile at the output of a wash light.**

**The Viper AirFX has adopted the compact form, impressive speed, superior light quality and beautiful colors that the MAC Viper Profile is renowned for. It is also based on the same 1000-watt lamp for an output that convincingly exceeds any larger, heavier and more power-demanding 1500-watt profile fixture.**

35000 Lumens – excellent light quality with 6000K color temperature

1:5 zoom - Continuous and fast zoom with auto-linked focus

160 mm precision PC front lens for fat beam looks

### FEATURES

- 35000 Lumens – excellent light quality with 6000K color temperature
- 1:5 zoom - Continuous and fast zoom with auto-linked focus
- 160 mm precision PC front lens for fat beam looks
- Frost - snap or fade-in for beautiful wash effect
- Rotating gobo wheel with 5 replaceable designs
- Static gobo wheel with 7 designs
- CMY – Vibrant color mixing with a superior palette of colors including true reds, rich ambers, primary green and deep blues
- Linear CTO – Daylight to tungsten CCT control and expansion of the CMY palette
- 7-slot color wheel – Static colors and correction filters for added color choice
- Dimmer and shutter - Combined dimmer/shutter system with intensity effects, instant blackout/open and smooth fades
- Iris – Fast and tight iris with adjustable dynamic effects
- Diverse strobe effects

### GALLERY



# MAC VIPER™ Performance

## MAC Viper Performance



**The MAC Viper Performance is a full-feature framing fixture that delivers an output and performance never before seen in a fixture this size or one using so little power. Unlike other fixtures in this class, the MAC Viper Performance does not forgo an iris or animation wheel – they are both included along with a framing system and rotating gobos.**

**The framing system consists of four shutter blades that can all individually adjust +/- 30° while the entire system can rotate +/- 55°. The exacting system can repeat each cue with great precision. When fully focused, gobos can be nicely framed with a soft edge. The MAC Viper Performance has adopted the compact form, impressive speed, superior light quality and beautiful colors that the MAC Viper Profile is renowned for and uses the same 1000-watt lamp.**

26000 Lumens – Excellent light quality with a very flat and uniform field and 6000K color temperature

1:4 zoom – Fast zoom with auto-linked focus

Four shutter blades individually adjust +/- 30° while the entire system rotates +/- 55°. Repeats cues with great precision

### GALLERY



### FEATURES

- 26000 Lumens – Excellent light quality with a very flat and uniform field and 6000K color temperature
- 1:4 zoom – Fast zoom with auto-linked focus
- Four shutter blades individually adjust +/- 30° while the entire system rotates +/- 55°. Repeats cues with great precision
- Large aperture front lens – The 140 mm front lens exceeds the size of any other fixture in this segment for just the right fat beam look
- 5 rotating gobos – All glass gobos with only a slight focal separation to the framing system
- Animation wheel with continuous bi-directional rotation
- CMY – Vibrant color mixing with a superior palette of colors including true reds, rich ambers, primary green and deep blues
- 7-slot color wheel – Static colors and correction filters for added color choice and bump effects
- Linear CTO – Daylight to tungsten CCT control and expansion of the CMY palette
- Dimmer and shutter - Combined dimmer/shutter system with intensity effects, instant blackout/open and smooth fades
- Iris – Fast and tight iris with adjustable dynamic effects
- Strobe – Diverse strobe effects using mechanical or electronic control or in combination
- Soft frost – A light frost leaves gobo artwork visible with a beautiful soft edge. Includes a linear focus blurring option
- 4-facet prism – Real beam separation with rotation and index control for dynamic effects and accurate tiling

# MAC VIPER™ Profile



GALLERY



## MAC Viper Profile

**The MAC Viper Profile is a new breed of high-output profile luminaire with an exceptional feature set, superior light quality and a highly efficient optical system. It outperforms all market-leading profiles in the 1200-watt range and is even an alternative to 1500-watt fixtures. The Viper Profile is not only brighter, it is also a faster and more compact solution. With its 1000-watt HID source, the Viper consumes less power, making it over 50% more efficient than its 1200-watt rivals.**

26000 Lumens – Excellent light quality with a very flat and uniform field and 6000K color temperature

1:4 zoom – Fast zoom with auto-linked focus

Large aperture front lens – The 140 mm front lens exceeds the size of any other fixture in this segment for just the right fat beam look

### FEATURES

- 26000 Lumens – Excellent light quality with a very flat and uniform field and 6000K color temperature
- 1:4 zoom – Fast zoom with auto-linked focus
- Large aperture front lens – The 140 mm front lens exceeds the size of any other fixture in this segment for just the right fat beam look
- 2 x 5-slot rotating gobo wheels - All glass gobos with optimal focal separation for superior morphing effects
- FX wheel – Patent-pending FX wheel provides an additional 4 fixed gobos and 135° animation effect
- CMY – Vibrant color mixing with a superior palette of colors including true reds, rich ambers, primary green and deep blues
- 8-slot color wheel – Static colors and correction filters for added color choice and bump effects
- Linear CTO – Daylight to tungsten CCT control and expansion of the CMY palette
- Dimmer and shutter - Combined dimmer/shutter system with intensity effects, instant blackout/open and smooth fades
- Iris – Fast and tight iris with adjustable dynamic effects
- Strobe – Diverse strobe effects using mechanical or electronic control or in combination
- Soft frost – A light frost leaves gobo artwork visible with a beautiful soft edge. Includes a linear focus blurring option
- 4-facet prism – Real beam separation with rotation and index control for dynamic effects and accurate tiling

# MAC VIPER™ Wash DX



## MAC Viper Wash DX

The MAC Viper Wash DX is a full-feature, full-range wash luminaire with a unique internal barndoor system (shutters) that enables designers to shape and control light projection onto stages, performers, scenery, scrims or any set element with great precision. The fixture's internal framing system makes it a highly capable, automated substitute for a conventional daylight Fresnel fixture.

The MAC Viper Wash DX features an outstanding quality of light with unlimited color choices and maintains near full efficiency throughout its entire zoom range with no visible beam jump when zooming from tight to wide. The fixture has adopted the compact form, impressive speed, superior light quality and beautiful colors that the MAC Viper Profile is renowned for and uses the same 1000-watt lamp.

33000 Lumens – Excellent light quality with a uniform field and 6000K color temperature

1:5 zoom - Continuous and fast

Internal barndoor system – 1 pair of indexing shutters

### GALLERY



### FEATURES

- 33000 Lumens – Excellent light quality with a uniform field and 6000K color temperature
- 1:5 zoom - Continuous and fast
- Internal barndoor system – 1 pair of indexing shutters
- CMY – Vibrant color mixing with a superior palette of colors including true reds, rich ambers, primary green and deep blues
- Linear CTO – Daylight to tungsten CCT control and expansion of the CMY palette
- 7-slot color wheel – Static colors and correction filters for added color choice and bump effects
- Dimmer and shutter - Combined dimmer/shutter system with intensity effects, instant blackout/open and smooth fades
- Iris – Fast and tight iris with adjustable dynamic effects, complementing the barndoor system
- Diverse strobe effects

# MAC VIPER™ Wash



GALLERY



## MAC Viper Wash

**The MAC Viper Wash is a full-range wash luminaire capable of performing at the high level you would expect from a professional wash light. It features an outstanding quality of light with unlimited color choices and excellent color stability across the entire beam. It maintains near full efficiency throughout the entire zoom range with no visible beam jump when zooming from tight to wide. The MAC Viper Wash has adopted the compact form, impressive speed, superior light quality and beautiful colors that the MAC Viper Profile is renowned for and uses the same 1000-watt lamp.**

33000 Lumens – Excellent light quality with a uniform field and 6000K color temperature

1:5 zoom - Continuous and fast

CMY – Vibrant color mixing with a superior palette of colors including true reds, rich ambers, primary green and deep blues

### FEATURES

- 33000 Lumens – Excellent light quality with a uniform field and 6000K color temperature
- 1:5 zoom - Continuous and fast
- CMY – Vibrant color mixing with a superior palette of colors including true reds, rich ambers, primary green and deep blues
- Linear CTO – Daylight to tungsten CCT control and expansion of the CMY palette
- Dimmer and shutter - Combined dimmer/shutter system with intensity effects, instant blackout/open and smooth fades
- Diverse strobe effects

# JEM™ ZR25

## Compact FOG Machine



## JEM ZR25

The JEM™ ZR25 is a small, yet powerful fog machine designed to deliver superior and uninterrupted performance in demanding professional applications. Via its 1,150 W heat exchanger, the JEM ZR25 produces large amounts of fog ideal for small to medium-sized venues and stages in both install and rental markets. The JEM ZR25 features variable output control for more subtle effects and is fully up-to-date with digital remote, DMX and RDM. The entire JEM ZR range is compatible with a wide range of JEM Pro fog fluids. As machines designed and built to last, the JEM ZRs will continue to perform with great output and low consumption.

Small but powerful fog machine

Exceptional performance and output for its size

Simple plug-and-play operation via remote control or DMX

### GALLERY



### FEATURES

- 1,150 W heat exchanger
- 40 ml in 30 seconds peak performance
- 600 m<sup>3</sup>/min fog output
- Variable output control for subtle effects
- 7-8 minute warm-up time
- Digital remote, DMX and RDM
- Compatible with a wide range of JEM Pro fog fluids
- Floor standing or truss mounting (bracket included)
- PowerCONTRUE1
- 2.5-liter bottle

# JEM™ ZR35

## Mid-Size FOG Machine



## JEM ZR35

The JEM™ ZR35 is a mid-sized fog machine designed to deliver superior and uninterrupted performance in demanding professional applications. Via its powerful 1,500 W heat exchanger, the JEM ZR35 produces a fantastic peak output ideal for mid to large-sized venues and stages in both install and rental markets.

The rugged yet weight optimized JEM ZR35 also features variable output control for more subtle effects and is fully up-to-date with digital remote, DMX and RDM.

The entire JEM ZR range is compatible with a wide range of JEM Pro fog fluids. As machines designed and built to last, the JEM ZRs will continue to perform with great output and low consumption.

High endurance mid-sized fog machine

Exceptional performance and output

Various control options via digital remote, DMX and RDM

### GALLERY



### FEATURES

- 1,500 W heat exchanger
- 50 ml in 30 seconds peak performance
- 800 m<sup>3</sup>/min fog output
- Variable output control for subtle effects
- 8-9 minute warm-up time
- Digital remote, DMX and RDM
- Compatible with a wide range of JEM Pro fog fluids
- Floor standing or truss mounting (bracket included)
- PowerCONTRUE1
- 4-liter bottle (Also compatible with a 5-liter bottle)



# JEM™ ZR45

High-end FOG Machine



## JEM ZR45

The JEM™ ZR45 is a high-end fog machine designed to deliver superior and uninterrupted performance in demanding professional applications. Via its enhanced and powerful 2,000 W heat exchanger, the JEM ZR45 produces an exceptional peak output ideal for major venues and stages in both install and rental markets.

The rugged yet weight-optimized JEM ZR45 also features variable output control for more subtle effects and is fully up-to-date with digital remote, DMX and RDM.

The entire JEM ZR range is compatible with a wide range of JEM Pro fog fluids. As machines designed and built to last, the JEM ZRs will continue to perform with great output and low consumption.

High endurance high-end fog machine

Exceptional performance and output

Various control options via digital remote, DMX and RDM

### GALLERY



### FEATURES

- 2,000 W (EU model) / 1,800 W (US model) heat exchanger
- 80 ml in 30 seconds peak performance
- 1300 m<sup>3</sup>/min fog output
- Variable output control for subtle effects
- 9-10 minute warm-up time
- Digital remote, DMX and RDM
- Compatible with a wide range of JEM Pro fog fluids
- Floor standing or truss mounting (bracket included)
- PowerCONTRUE1
- 5-liter bottle

# JEM™ Glaciator™ Dynamic

## Low-fog effect machine

### One solution for perfect fog

The self-contained design creates the most realistic low-fog effects available—without the need for bulky industrial gases or ice.

### Easy operation

Streamlined user controls on the integrated remote control or the new fast-access keypad puts every aspect of your effects at your fingertips. Simply add low-fog fluid and select your desired output level with the touch of a button. For precision control the JEM Glaciator Dynamic includes 3- and 5-pin DMX connectivity.

### JEM premium low-fog fluids

Our custom-engineered low-fog fluids are the key to creating perfect billowy low-fog for the world's highest-profile productions. 100% bacteria- and mineral-free, JEM low-fog fluids are safe, environmentally conscious, and produce a consistent pure white effect every time.

The world's most popular low-fog machine just got even better. The Martin JEM Glaciator Dynamic is your complete solution for creating dense, billowy clouds of low-lying fog in any venue without the use of industrial gases or ice. Achieve lush low-lying fog on stage with lasting effects. With a full range of premium accessories, three low-fog fluid types to choose from, and streamlined user controls, you can create dramatic atmospheric effects for your production in moments. Just plug in, set the stage, and amaze.



## KEY MESSAGES

### CLASS-LEADING LOW-FOG EFFECTS

For over 25 years, the JEM Glaciator series has set the standard of excellence in low-fog effects. And with the all-new JEM Glaciator Dynamic, we're raising the bar again. A carefully redesigned chassis is equipped with all-digital sensors for precise, consistently smooth low-fog. Our unique effect carburetor and improved closed-loop refrigeration system creates soft, dense low-fog that's colder and dissipates slower than ever. That means you get the longest-lasting effect with the highest production value possible.

### QUIET OPERATION

The JEM Glaciator Dynamic was built with ultra-quiet operation in mind, with an average noise level of just 40.47 dBA in standby and 62.76 dBA during maximum low-fog output. From the unique effect carburetor to carefully placed exhaust vents, every aspect of its chassis is designed to dampen acoustic output. And our new inverter-drive technology tightly controls each internal component. When the compressor and fans come to life, they spin up softly to create mesmerizing on-stage effects—without distracting off-stage noise.

### TOUR-READY DESIGN

A rugged steel chassis and durable steel access panels make the JEM Glaciator Dynamic a perfect fit for the most demanding tours. Specialized easy-grip bumper bars protect the unit in fast-paced production environments and double as convenient lifting points when it's time to load in and load out. And with a new 208-240 V, 50/60 Hz universal power supply, you can create eye-grabbing low-fog on any stage, anywhere in the world.

### COMPACT DESIGN

We designed the JEM Glaciator Dynamic from the ground up to give you more room in your theater and on your tour. At just 785 x 648 x 769 mm (30.9 x 25.5 x 30.2 in), it's 10% smaller than the previous generation, making it easy to transport and store even in the smallest performance spaces. But we didn't stop there. The all-new mechanical design offers immediate access to internal components so you can easily maintain your unit for years of exceptional low-fog effects.

# JEM™ HAZER PRO

Water-based haze Machine



## JEM Hazer Pro

The JEM Hazer Pro is a top of the range water-based haze machine designed for the highly demanding professional market. Its ability to produce exceptionally fine atmospheric haze in a short period of time while operating at low noise levels makes it an ideal choice for rental houses, medium to large shows, theatres, studios, clubs, bars, cruise ships, theme parks and more.

Robust yet small and lightweight, the JEM Hazer Pro™ is capable of dispersing an even, continuous haze with superior optical clarity and reflectivity, the perfect small-particle haze for highlighting today's highly defined light beams. The highly efficient JEM C-Plus Haze fluid was developed for the JEM Hazer Pro and a full reservoir can yield up to 65 hours of run time before refilling is necessary.

### GALLERY



The JEM Hazer Pro features a patented battery-powered automatic shutdown system that purges the trackless heat exchanger system, thus preventing clogging, reducing maintenance and extending product life. Robust control options allow the machine to be controlled independently, remotely or with DMX featuring RDM compatibility.

Finest haze production in its class

Programmable fast access control keys

Actors' Equity/Broadway League Approved.

### FEATURES

- Continuous effect output.
- Water-based fluid provides dense particles and even haze.
- Sealed fluid system with quick-connect fittings.
- 2.5 liter fluid reservoir - 10.5 hours on full output.
- User-friendly on-board digital control panel.
- Pre-programmed "silent" mode.
- Independent variable haze and fan control.
- DMX Control with RDM Standard.
- Road-worthy industrial design.
- Lightweight and small footprint.
- Optional Flying Kit and Digital Remote Control.
- Battery powered automatic shutdown system - prevents clogging.

# JEM™ Compact HAZER Pro

Compact-Efficient haze Machine



## JEM Compact Hazer Pro

**Robust yet small and lightweight, the JEM COMPACT HAZER PRO is a versatile haze machine designed for the highly demanding professional market. Its ability to produce exceptional atmospheric haze effects in a short period of time while operating at low noise levels make it ideal for nearly any application from shows and events to theatre, TV studios, clubs, cruise ships, theme parks and more.**

Ultra-fast 1 minute ready time

Shutdown cycle to prevent clogging

Actors' Equity/Broadway League Approved

### GALLERY



### FEATURES

- Continuous Effect Output.
- Sealed fluid system with quick-connect fittings
- User-friendly on board digital control panel.
- Independent variable haze and fan control.
- Water-based fluid provides dense particles and even haze.
- 2.5 liter reservoir - 20 hours on full output.
- Optical Density Timer Control system.
- Advanced Pump Technology (APT)
- Optional flying kit, air director and digital remote control.
- Small footprint- lightweight, less than 25 lb. filled.

# JEM™ AF-1 MKII

Compact Fan Machine

# JEM™ AF-2

High-Output FAN machine



GALLERY



## JEM AF-1 MkII

The JEM AF-1 MkII is Martin's industry-standard compact fan which sets the benchmark for effect fans. The JEM AF-1 MkII is more responsive and even more versatile than its original predecessor the AF-1. Using a 12" sealed axial motor, with variable speed, the AF-1 is responsive even at low speeds while remaining silent, only producing 70 dBA at maximum speed. The AF-1 MkII has integrated DMX or by using the included remote control to control, it is the ideal fan for a large variety of indoor or outdoor applications from touring and stage to theme parks, cruise ships and much more.

Integrated DMX and included remote control

Instant On

Low noise, 70 dBA at maximum output

### FEATURES

- 12" Sealed motor – resists moisture
- Variable speed range and control
- Low minimum speed
- Floor standing or truss mounting
- Broad regulatory compliance

## JEM AF-2

The JEM AF-2 DMX fan is a high-output fully DMX controllable fan. The fan casing is constructed from lightweight aluminum to make it easy for one person to carry; weight has been limited to only 17.5 kg with the included flying bracket installed. It is supplied with an analog timer remote control for fast and easy control. The included aluminum flying bracket is compatible with the Omega clamp system and an optional "Touring Frame" is available for added protection against the rigors of the road with an included remote control storage system perfect for rental production purposes. The 24" fan motor is sealed to withstand high condensation levels. The JEM AF-2 DMX fan has been designed as a complimentary item for a complete atmospheric system solution with special effects, theme parks, photography film/studio work in addition to traditional stage and theatre applications in mind.

Integrated DMX and included remote control

Low-noise, 73 dBA at maximum output

Variable speed, range and control

### FEATURES

- 24" Sealed motor, resists moisture + Instant-on, low minimum speed
- Floor standing or truss mounting + Optional "Touring Frame"
- Broad regulatory compliance



GALLERY



# P3 System Controller

Italian version

The Martin P3 System Controllers offer an easy to use solution to map video onto Martin Creative LED and Lighting fixtures, including manipulation of the video such as scaling, rotating, mirroring and more. On top of sending video to these fixtures, the P3 System Controllers also merge in controls from any lighting console, allowing you to mix 'n match video and lighting control of the fixtures, for the best of both worlds and more creative freedom.

The Martin P3 System Controllers stand out with their ease of use and creative features. All connected fixtures are addressed, patched and configured in few clicks, with no need to walk up to any fixture for old-school manual setup. The communication between the fixtures and P3 System Controller is fully bi-direction, so real-time feedback and error-reporting enables you to have a full overview of the entire setup, even in fixed installations where the P3 System Controller can be monitored via the Internet.

## ONE VISUAL CANVAS

P3 brings creative LED, video panels & fixtures together into one visual canvas; allowing all to be treated as one and to prevent the need for dedicated control solutions for each of the different products.

## SIMPLICITY TO ENABLE CREATIVITY

The P3 ecosystem removes the need for manual addressing and external computers for setup, while featuring an ergonomic user interface. Mapping and scaling is automated to give you more time to be creative.

## CREATE LOOKS THE WAY YOU WANT

P3 offers the freedom to use the most suited tool for each vision. Whether using video content, traditional DMX controls, or a mix of control methods, you can achieve uniquely creative looks for each application.

## OPTIMAL PERFORMANCE

All P3-enabled products feature advanced color & brightness calibration & color-matching between fixture types. The entire system is fully synchronized, ensuring all elements work cohesively without visible latency.

	P3-050 System Controller	P3-150 System Controller	P3-300 System Controller	P3-PC System Controller
<b>Video Input</b>	1x DVI-D up to 1920x1080	1x DVI-D up to 1920x1080	1x DVI-D up to 1920x1080 2x SDI up to 3G-SDI 1x Genlock	Screen-capture or Media Server Integration
<b>DMX Input</b>	1 universe DMX 128 universes Art-Net	1 universe DMX 128 universes Art-Net	1 universe DMX 32 universes Art-Net	128 universes Art-Net
<b>P3 Output</b>	1 network with up to 100.000 pixels worth of fixtures	1 network with up to 500.000 pixels worth of fixtures	4 networks with up to 2.000.000 pixels worth of fixtures	1 network with up to 20.736 pixels worth of fixtures
<b>Form-Factor</b>	1U 19" rackmount	1U 19" rackmount	2U 19" rackmount	Software installed on customer-supplied Windows computer
<b>Remote Management</b>	Yes, internal webpages and syslog	Yes, internal webpages and syslog	Yes, internal webpages and syslog	No

Please consult P3 System Controller Capacity Info Note for more details

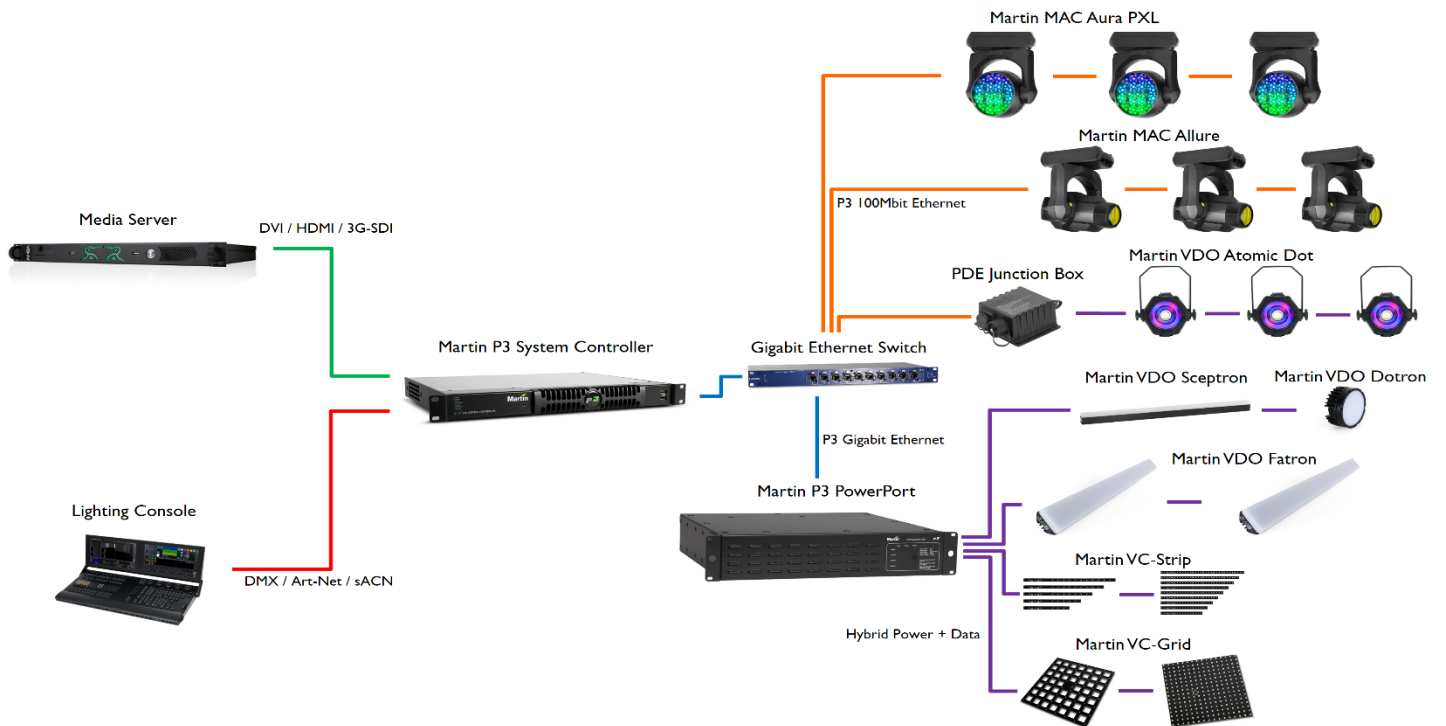
## GET STARTED WITH MARTIN P3-PC SYSTEM CONTROLLER SOFTWARE FOR FREE

The time has never been better to discover and try the unique features of P3 software to control P3-controllable fixtures like MAC Allure Profile, MAC Allure Wash PC, VDO Atomic Dot, VDO Sceptron, VDO Fatron, VDO Dotron, Exterior PixLine and more. You can start with the free P3-PC System Controller software and then grow into the bigger P3 System Controllers (P3-050, P3-150 and P3-300).

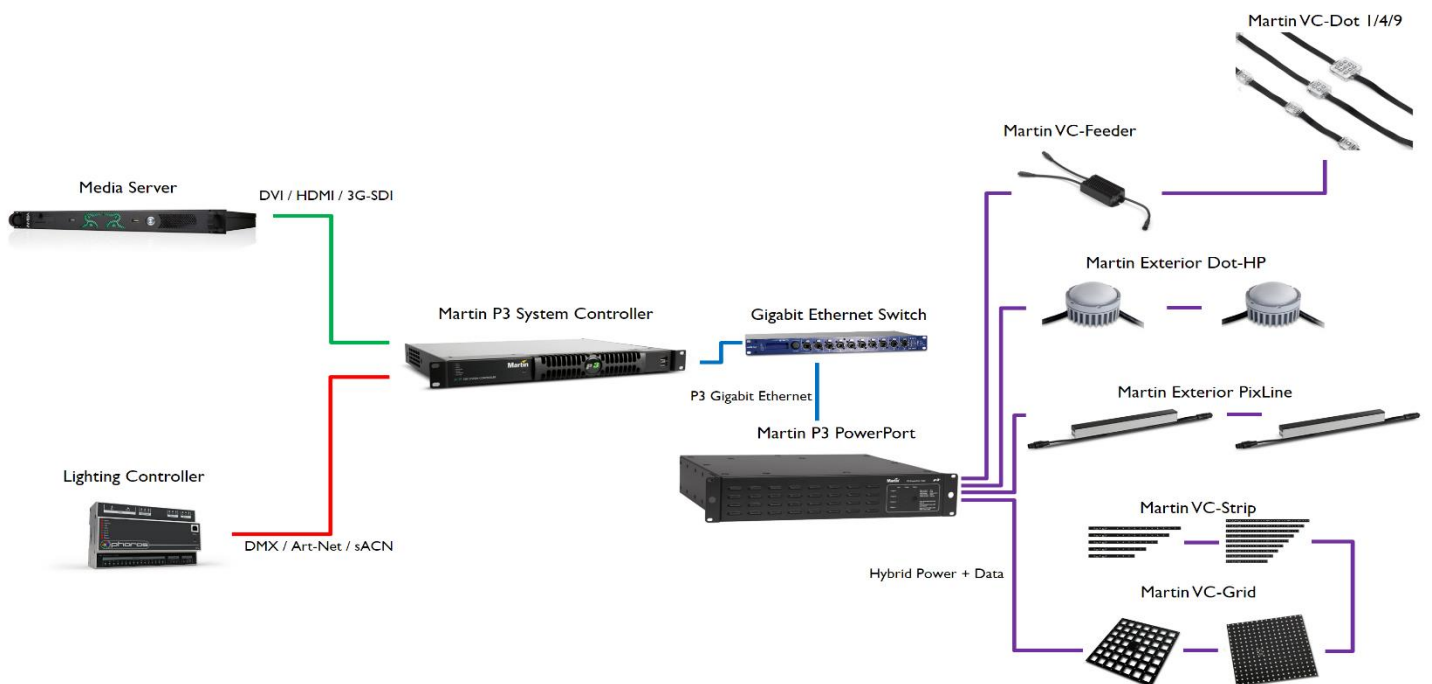
# P3 System Controller

Italian version

## P3 IN RENTAL APPLICATIONS



## P3 IN ARCHITECTURAL APPLICATIONS



# P3 System Controller

Italian version

I controller di sistema Martin P3 offrono una soluzione facile da usare per mappare video su dispositivi di illuminazione e LED Creative Martin, inclusa la manipolazione del video come ridimensionamento, rotazione, mirroring e altro. Oltre a inviare video a questi dispositivi, i controller di sistema P3 uniscono anche i controlli da qualsiasi console di illuminazione, consentendo di combinare il video e il controllo dell'illuminazione dei dispositivi, per il meglio di entrambi i mondi e una maggiore libertà creativa.

I controller di sistema Martin P3 si distinguono per la loro facilità d'uso e le caratteristiche creative. Tutti i dispositivi collegati vengono indirizzati, patchati e configurati in pochi clic, senza la necessità di avvicinarsi a qualsiasi dispositivo per l'impostazione manuale. La comunicazione tra le apparecchiature e il controller di sistema P3 è completamente bidirezionale su cavo di rete, quindi il feedback e la segnalazione degli errori in tempo reale consentono di avere una panoramica completa dell'intera configurazione, anche in installazioni fisse in cui il controller di sistema P3 può essere monitorato tramite Internet.

## UNA TELA VISIVA

P3 riunisce LED creativi, pannelli video e fixtures in un'unica tela visiva; consentendo di trattare tutti gli elementi come uno e di evitare la necessità di soluzioni di controllo dedicate per ciascuno dei diversi prodotti.

## SEMPLICITÀ PER ABILITARE LA CREATIVITÀ

L'ecosistema P3 elimina la necessità di indirizzamento manuale e computer esterni per la configurazione, pur presentando un'interfaccia utente ergonomica. La mappatura e il ridimensionamento sono automatizzati per darti più tempo per essere creativo.

## CREA IL LOOK COME VUOI

P3 offre la libertà di utilizzare lo strumento più adatto per ogni visione. Sia che utilizzi contenuti video, controlli DMX tradizionali o una combinazione di metodi di controllo, puoi ottenere un aspetto creativo unico per ogni applicazione.

## PRESTAZIONI OTTIMALI

Tutti i prodotti abilitati per P3 sono dotati di calibrazione avanzata del colore e della luminosità e della corrispondenza dei colori tra i tipi di dispositivi. L'intero sistema è completamente sincronizzato, garantendo che tutti gli elementi funzionino in modo coeso senza latenza visibile.

	<b>P3-050 System Controller</b>	<b>P3-150 System Controller</b>	<b>P3-300 System Controller</b>	<b>P3-PC System Controller</b>
<b>Video Input</b>	1x DVI-D up to 1920x1080	1x DVI-D up to 1920x1080	1x DVI-D up to 1920x1080 2x SDI up to 3G-SDI 1x Genlock	Screen-capture or Media Server Integration
<b>DMX Input</b>	1 universe DMX 128 universes Art-Net	1 universe DMX 128 universes Art-Net	1 universe DMX 32 universes Art-Net	128 universes Art-Net
<b>P3 Output</b>	1 network with up to 100.000 pixels worth of fixtures	1 network with up to 500.000 pixels worth of fixtures	4 networks with up to 2.000.000 pixels worth of fixtures	1 network with up to 20.736 pixels worth of fixtures
<b>Form-Factor</b>	1U 19" rackmount	1U 19" rackmount	2U 19" rackmount	Software installed on customer-supplied Windows computer
<b>Remote Management</b>	Yes, internal webpages and syslog	Yes, internal webpages and syslog	Yes, internal webpages and syslog	No

Si prega di consultare la nota sulle informazioni di capacità del controller di sistema P3 per maggiori dettagli

## INIZIA GRATUITAMENTE CON IL SOFTWARE MARTIN P3-PC SYSTEM CONTROLLER

Non è mai stato il momento migliore per scoprire e provare le caratteristiche uniche del software P3 per i dispositivi controllabili da P3 come MAC Allure Profile, MAC Allure Wash PC, VDO Atomic Dot, VDO Atomic Bold, VDO Sceptron, VDO Fatron, VDO Dotron, Exterior PixLine; MAC Ultra e MAC Aura PXL e altro ancora. È possibile iniziare con il software gratuito del controller di sistema P3-PC e poi passare ai controller di sistema P3 più grandi (P3-050, P3-150 e P3-300).



# P3-PC System Controller



## P3-PC System Controller

**The P3-PC works as a PC-based P3 System Controller for smaller Martin LED display setups up to 20.736 pixels; as an off-line editor for the entire range of P3 System Controllers to preprogram shows anywhere on a PC; and as a tool for firmware uploads and addressing/testing of Martin LED Video products.**

Off-Line Editor for all P3 System Controllers

Stand-Alone P3 System Controller software for small setups

Compatible with all Martin LED video products (panels and creative products)

### GALLERY



### FEATURES

- Drives up to 20.736 pixels
- On-screen grabber for video-capture
- Automatic Hippotizer interface when installed on Hippo V4 or newer
- Real time visualization of the video mapping
- Compatible with any standard PC running Windows
- Free download from Martin website
- Most user-friendly LED Video processor on the market
- Compatible with all Martin LED Video products (panels and creative products)
- All connected products report status and problems back to the controller for easy monitoring and maintenance
- Showfiles created on P3-PC can easily be loaded onto a USB stick and transferred to any other P3 System Controller

# P3-050 System Controller

ENTRY LEVEL P3 LED VIDEO CONTROLLER

## HIGHLIGHTS

- Compact and affordable LED Video Controller
- Compatible with all Martin Creative LED products and P3-enabled MAC moving heads
- Integration with lighting controls (DMX, Art-Net) and automation systems



## OVERVIEW

The P3-050 System Controller is a compact and affordable video processor for the entire range of Martin LED Video products and P3 enabled MAC moving heads, driving up to 100,000 pixels. Integration with lighting and automation controls is facilitated via the integrated DMX, Art-Net and Kinesys interfaces.

## KEY MESSAGES

### ONE VISUAL CANVAS

P3 brings creative Martin LED Video products and P3 enabled MAC moving heads together into one visual canvas; allowing all to be treated as one and to prevent the need for dedicated control solutions for each of the different products.

### SIMPLICITY TO ENABLE CREATIVITY

The P3 ecosystem removes the need for manual addressing and external computers for setup, while featuring an ergonomic user interface. Mapping and scaling is automated to give you more time to be creative.

### CREATE LOOKS THE WAY YOU WANT

P3 offers the freedom to use the most suited tool for each vision. Whether using video content, traditional DMX controls, or a mix of control methods, you can achieve uniquely creative looks for each application.

### OPTIMAL PERFORMANCE

All P3-enabled products feature advanced color & brightness calibration & color-matching between fixture types. The entire system is fully synchronized, ensuring all elements work cohesively without visible latency.

# P3-150 System Controller

MID RANGE P3 LED VIDEO CONTROLLER

## HIGHLIGHTS

- Compact and ergonomic LED Video Controller
- Compatible with all Martin Creative LED products and P3-enabled MAC moving heads
- Integration with lighting controls (DMX, Art-Net) and automation systems



## OVERVIEW

The P3-150 System Controller is a user-friendly and reliable video processor for the entire range of Martin LED Video products and P3-enabled MAC moving heads, driving up to 500,000 pixels. No matter how you mix Creative LED fixtures, LED Video panels and P3-enabled MAC moving heads, the workflow remains simple and integrated. Integration with lighting and automation controls is facilitated via the integrated DMX, Art-Net and Kinesys interfaces.

## KEY MESSAGES

### ONE VISUAL CANVAS

P3 brings Martin creative LED Video products and P3-enabled MAC moving heads together into one visual canvas; allowing all to be treated as one and to prevent the need for dedicated control solutions for each of the different products.

### SIMPLICITY TO ENABLE CREATIVITY

The P3 ecosystem removes the need for manual addressing and external computers for setup, while featuring an ergonomic user interface. Mapping and scaling is automated to give you more time to be creative.

### CREATE LOOKS THE WAY YOU WANT

P3 offers the freedom to use the most suited tool for each vision. Whether using video content, traditional DMX controls, or a mix of control methods, you can achieve uniquely creative looks for each application.

### OPTIMAL PERFORMANCE

All P3-enabled products feature advanced color & brightness calibration & color-matching between fixture types. The entire system is fully synchronized, ensuring all elements work cohesively without visible latency.

# P3-300 System Controller

HIGH CAPACITY P3 LED VIDEO CONTROLLER

## HIGHLIGHTS

- Powerful and ergonomic LED Video Controller
- Compatible with all Martin Creative LED products and P3-enabled MAC moving heads
- Integration with lighting controls (DMX, Art-Net) and automation systems



## OVERVIEW

The P3-300 System Controller combines the award-winning and intuitive P3 workflow with a brand new high-performance video processing engine. No matter how you mix Creative LED fixtures, LED Video panels and P3-enabled MAC moving heads, the workflow remains simple and integrated. The P3-300 is equipped with a DVI input, a component video input and two SDI input ports (up to 3G). The output capacity of 2,000,000 pixels allows even more products to be driven from a single controller.

## KEY MESSAGES

### ONE VISUAL CANVAS

P3 brings Martin creative LED Video products and P3 enabled MAC moving heads together into one visual canvas; allowing all to be treated as one and to prevent the need for dedicated control solutions for each of the different products.

### SIMPLICITY TO ENABLE CREATIVITY

The P3 ecosystem removes the need for manual addressing and external computers for setup, while featuring an ergonomic user interface. Mapping and scaling is automated to give you more time to be creative.

### CREATE LOOKS THE WAY YOU WANT

P3 offers the freedom to use the most suited tool for each vision. Whether using video content, traditional DMX controls, or a mix of control methods, you can achieve uniquely creative looks for each application.

### OPTIMAL PERFORMANCE

All P3-enabled products feature advanced color & brightness calibration & color-matching between fixture types. The entire system is fully synchronized, ensuring all elements work cohesively without visible latency.

# DMX PowerPort 375

INDOOR POWER & DATA UNIT FOR MARTIN CREATIVE LED

---



## OVERVIEW

The DMX PowerPort 375 is a compact and versatile power supply for the entire Martin Creative LED Video range, to be used in DMX-based applications. The DMX PowerPort 375 is compatible with these product families:

- Martin VDO Fatron
- Martin VDO Dotron
- Martin VDO Sceptron
- Martin VC-Grid
- Martin VC-Strip
- Martin VC-Dot
- Martin Exterior PixLine
- Martin Exterior Dot-HP

The DMX PowerPort 375's versatile housing supports single- and dual-unit mounting in 19" racks, wall-mounting and truss-mounted hanging configurations. The robust connectors and built-in DMX/RDM compatible splitter facilitate easy daisy-chaining between units, while the local test-button provides quick system-check without running back to the console.

# P3 PowerPort 1000 IP Install

OUTDOOR POWER & DATA UNIT FOR MARTIN CREATIVE LED

---

## HIGHLIGHTS

- Power and data processor for all Martin's fixed-installation creative LED video products
- Flexible integration: can be located remotely, indoors or outdoors
- Easy cabling and configuration



## OVERVIEW

The P3 PowerPort 1000 IP Install is an integrated power supply and data processor for Martin's range of creative LED video products, including the Exterior PixLine™, Exterior Dot-HP™ and VC-Dots™. When driven by one of Martin's award-winning P3™ System Controllers™, it combines stable power delivery with high-speed, high-capacity video processing. Setup and configuration are easy and intuitive. A full outdoor rating and optional fiber interface make the product perfect for permanent outdoor installations.

## KEY MESSAGES

### EASY CABLING

The P3 PowerPort connects with the Creative LED fixtures using a single cable that carries both power and data, greatly simplifying the installation.

### AUTOMATIC SETUP

There is no need to configure any IP address or settings on the P3 PowerPort. All setup and configuration is done automatically from the Martin P3 System Controller.

### SIMPLE CONTROL INTERFACE

A single push-button allows for easy and fast local testing and diagnostics of the connected fixtures. The control interface also includes status LEDs for power and data for each of the four outputs.

### DISCREET & ROBUST HOUSING

The P3 PowerPort 1000 IP Install comes in a robust IP66 waterproof housing, designed to withstand any harsh outdoor environment. It is also available in customizable housing colors to allow for discreet installation.

# P3 PowerPort 1000 IP Rental

OUTDOOR POWER & DATA UNIT FOR MARTIN CREATIVE LED

---

## HIGHLIGHTS

- Power and data processor for all Martin's rental market creative LED video products
- Flexible integration: can be located remotely, indoors or outdoors
- Easy cabling and configuration



## OVERVIEW

The P3 PowerPort 1000 IP Rental is an integrated power supply and data processor for Martin's rental range of creative LED video products, including the VDO Sceptron™, VDO Fatron™, VDO Dotron™ and VC-Dots™. When driven by one of Martin's award-winning P3™ System Controllers™, it combines stable power delivery with high-speed, high-capacity video processing. Setup and configuration are easy and intuitive. A full outdoor rating with robust IP65-rated connectors make the product perfect for outdoor rental installations.

## KEY MESSAGES

### EASY CABLING

The P3 PowerPort connects with the Creative LED fixtures using a single cable that carries both power and data, greatly simplifying the installation.

### AUTOMATIC SETUP

There is no need to configure any IP address or settings on the P3 PowerPort. All setup and configuration is done automatically from the Martin P3 System Controller.

### SIMPLE CONTROL INTERFACE

A single push-button allows for easy and fast local testing and diagnostics of the connected fixtures. The control interface also includes status LEDs for power and data for each of the four outputs.

### ROBUST HOUSING

The P3 PowerPort 1000 IP Rental comes in a robust IP65-rated waterproof housing which can be truss-mounted or freestanding.

# P3 PowerPort 1500

INDOOR POWER & DATA UNIT FOR MARTIN CREATIVE LED

## HIGHLIGHTS

- Indoor power and data processor for all Martin creative LED video products
- Flexible integration: can be located remotely from video display products
- Easy cabling and configuration



## OVERVIEW

The P3 PowerPort 1500 is an integrated power supply and data processor for the Martin™ range of creative LED video products, including the VDO Scepter™, VDO Fatron™, VDO Dotron™, Exterior PixLines™, VC-Grids™, VC-Strips™ and VC-Dots™. When driven by one of Martin's award-winning P3™ System Controllers, it combines stable power delivery with high-speed, high-capacity video processing. Setup and configuration are easy and intuitive.

## KEY MESSAGES

### EASY CABLING

The P3 PowerPort connects with the Creative LED fixtures using a single cable that carries both power and data, greatly simplifying the installation.

### AUTOMATIC SETUP

There is no need to configure any IP address or settings on the P3 PowerPort. All setup and configuration is done automatically from the Martin P3 System Controller.

### SIMPLE CONTROL INTERFACE

A single push-button allows for easy and fast local testing and diagnostics of the connected fixtures. The control interface also includes status LEDs for power and data for each of the four outputs.

### VERSATILE HOUSING

The P3 PowerPort 1500's housing allows rackmount, wallmount and trussmount installation of the unit. So you can place the unit where it suits you best.



# VDO ATOMIC™ DOT

2,700K WARM | 5,700 K COLD | BLINDER. STROBE. BEAM. SPOT. PIXEL.



The Martin VDO Atomic Dot WRM and CLD hybrid lighting and video fixtures combine a small blinder, compact strobe, video-pixel and small spotlight.

By combining a video-controlled Aura backlight and a bright blinder/strobe dot in one fixture, lighting designers are empowered with greater creative potential to make a bigger impact with audiences than ever before. The fixtures' compact design also gives designers the ability to place VDO Atomic Dots just about anywhere and deploy them in larger quantities. Integrated support for P3, DMX, Art-Net and sACN eliminates the need for additional interface boxes and onboard P3 eases pixel mapping and using the product as a video controlled blinder or strobe.

VDO Atomic Dots are ideal for rental customers and lighting designers working in concert/touring and TV show sets as well as supporting corporate and nightclub clients.

## KEY MESSAGES

### DUAL LAYER FIXTURE

A high-power, warm (WRM) or cold (CLD) white beam combined with a pixel-controllable RGB Aura backlight enables truly, unique effects. Both layers can be controlled individually via P3, DMX, Art-Net, sACN or a mix.

### COMPACT AND LIGHTWEIGHT

Packs a lot of punch from a very compact fixture that can be used and hidden in any application. Internal power supply and IP65-rated housing increase usability of this fixture in various applications.

### EASILY COMBINE MULTIPLE FIXTURES IN ARRAYS

The smart interlocking mechanics allow fixtures to be combined into battens, arrays or creative shapes. Creative imagination is your only limit.

### HYBRID DATA AND POWER CABLE

The hybrid power and data cable carries all power and data for the fixtures, allowing them to be daisy-chained very easily in large quantities.

### FRONT-ACCESSORY HOLDER

The industry-standard PAR30-sized front-accessory holder can hold a diffuser to widen the beam-angle of the fixture. It also fits standard barndoors to give the fixture an artistic look on stage.

# VDO ATOMIC™ BOLD

BLINDER. STROBE. STAGE WASH. EYE CANDY



The Martin VDO Atomic Bold is an incredibly versatile creative LED hybrid fixture and the newest addition to the VDO Atomic family. It includes a wide range of functionality to support a myriad of applications as an audience blinder, strobe light, creative LED pixelmapping surface, eye-candy effect light and stage wash - all in a single, compact fixture.

Including many of the benefits that made its sibling, the VDO Atomic Dot a popular hybrid fixture, the VDO Atomic Bold retains the same interlocking mechanics, same cabling and a similar look but is a larger fixture with higher, full color lumen output to offer lighting designerseven more creative potential.

It features a unique octagonal-shaped design with simple connections to work as a single light or in multiples to form a large array. In addition to industry-standard protocols such as Art-Net, sACN and DMX, Martin P3 control unleashes creative freedom to mix video mappingwith DMX control.

The VDO Atomic Bold is ideal for rental customers and set and lighting designers working in concert/touring and TV shows but is also a perfect fit for corporate and customers in the higher end nightclub market.

## KEY MESSAGES

### DUAL LAYER FIXTURE

A high lumen output, full color beam combined with a pixel-controllable RGB Aura backlight enables truly, unique effects. Both layers can be controlled individually via P3, DMX, Art-Net, sACN or a mix.

### COMPACT AND ROBUST

For such a compact fixture, the VDO Atomic Bold packs a mighty punch and its robust and IP65-rated housing enables it to be used in any application - indoors or outdoors.

### BEAUTIFUL TUNGSTEN EFFECT

The VDO Atomic Bold's beam and aura work together to provide an authentic looking tungsten emulation, providing color shift and dimming decay.

### EASILY COMBINE MULTIPLE FIXTURES IN ARRAYS

The smart interlocking mechanics allow fixtures to be combined into battens, arrays or creative shapes - creative imagination is your only limit. Or go extra creative and combine the VDO Atomic Bold with the smaller VDO Atomic Dot in a mixed array.

### HYBRID DATA AND POWER CABLE

The hybrid power and data cable carries all power and data for the fixtures, allowing them to be daisy-chained very easily in large quantities.

### FRONT-ACCESSORY HOLDER

The industry-standard PAR64-sized front-accessory holder can hold a diffuser to widen the beam-angle of the fixture. It also fits standard barndoors to give the fixture an artistic look on stage

# VDO DOTRON™

Outdoor-rated LED video pixel

## VDO Dotron



Your creative VDO toolbox just got bigger, more dynamic and flexible, making your P3 System Controller even more versatile.

VDO Dotron is a compact and powerful outdoor-rated video pixel with many faces that truly sparks creativity for 3D stage setups. A wide variety of lenses and diffusers offers a wealth of different looks - or go with no front for a raw look. Easy video-mapping and creative mix 'n' match with other Martin LED video products via the P3 System Controller. It uses the same integrated power and data cabling as VDO Sceptron and VDO Fatron, making installation a breeze. Be creative.

### GALLERY



The perfect expansion of your creative VDO toolbox for exciting 3D stage setups

Extensive range of field-exchangeable diffusers and lenses for a great variety of looks

Easy setup, mapping and configuration via P3 System Controller

### FEATURES

- Supported by integrated power and data processor (P3 PowerPort 1500 or P3 PowerPort 1000 IP) and a simplified cabling system
- Combined power and data cabling (compatible with other products such as VDO Sceptron and VDO Fatron)
- P3/DMX/RDM controllable (automatic protocol detection)
- Extensive range of built-in pixelated effects
- Intuitive mapping and addressing via P3 System Controller
- Fully color and brightness calibrated for optimal cross-product consistency (colors match with VDO Sceptron and VDO Fatron)
- High-quality 16-bit per color image processing technology
- 100 lumen per dot calibrated
- 4 different diffuser options plus 1 narrow lens array (all field-exchangeable)
- IP65 rated for outdoor use
- Versatile rigging accessories

# VDO FATRON™ 20

Linear Outdoor-rated LED video fixture



## VDO Fatron 20

**Your creative VDO toolbox just got bigger, more dynamic and way more flexible, making your P3 System Controller even more versatile.**

**VDO Fatron 20 is a 20 mm pixel pitch outdoor-rated LED video batten with an extensive range of optical accessories for a wide variety of looks that allows you to seriously play with creativity in 3D stage designs. Easy video-mapping and creative mix 'n' match with other Martin LED video products via the P3 System Controller. It uses the same integrated power and data cabling as VDO Sceptron and VDO Dotron, making installation a breeze. Be creative.**

The perfect expansion of your creative VDO toolbox for exciting 3D stage setups

Extensive range of field-exchangeable diffusers and lenses for a great variety of looks

Easy setup, mapping and configuration via P3 System Controller

### GALLERY



### FEATURES

- Supported by integrated power and data processor (P3 PowerPort 1500 or P3 PowerPort 1000 IP) and simple cabling system
- Combined power and data cabling (compatible with other products such as VDO Sceptron and VDO Dotron)
- P3/DMX/RDM controllable (automatic protocol detection)
- Extensive range of built-in effects
- Intuitive mapping and addressing via P3 System Controller
- Fully brightness and color calibrated for optimal consistency between products (colors matched with VDO Sceptron and VDO Dotron)
- Pixel-level brightness and color calibrated for a completely homogenous look
- High-quality 16-bit per color image processing technology
- 20 mm pixel pitch
- 500 cd per meter calibrated
- 1500 lumen per meter calibrated
- 8 different diffuser options plus 1 lens option (all field-exchangeable)
- IP65 rated for outdoor use
- Versatile rigging accessories
- Available in two lengths: 1000 mm and 320 mm

# VDO SCEPTRON™ 10

Linear Outdoor-rated LED video fixture



## VDO Sceptron 10

The VDO Sceptron 10 is a linear outdoor-rated LED video fixture for the rental market with 10 mm pixel pitch and an extensive range of optical accessories for a wide variety of looks. The VDO Sceptron 10 is driven by the Martin P3 System Controller family for easy configuration, mapping and setup, and is also backwards compatible with DMX for smaller setups. The integrated power and data cabling allows for long daisy-chains with many fixtures per cable-run, while the power supply can be located backstage (up to 50 m away) for a clean setup avoiding messy cabling and several driver boxes.

### GALLERY



Extensive range of field-exchangeable optical accessories for a wide variety of looks

Easy setup, mapping and configuration

Bright and fully calibrated for optimal consistency

### FEATURES

- 10 mm pixel pitch
- 250 cd per meter calibrated
- 750 lumen per meter calibrated
- High-quality 16-bit per color image processing technology
- Pixel-level brightness and color calibration for optimal image quality
- P3/DMX controllable (automatic protocol detection)
- Intuitive mapping and addressing via P3 System Controller
- Combined power/data input (single cable for power and data input)
- Supported by integrated power and data processor (P3 PowerPort 1500 or P3 PowerPort 1000 IP) and simple cabling system
- Available in lengths of 1000 mm and 320 mm

# VDO SCEPTRON™ 20

Linear Outdoor-rated LED video fixture



## VDO Sceptron 20

The VDO Sceptron 20 is a linear outdoor-rated LED video fixture for the rental market with 20 mm pixel pitch and an extensive range of optical accessories for a wide variety of looks. The VDO Sceptron 20 is driven by the Martin P3 System Controller family for easy configuration, mapping and setup, and is also backwards compatible with DMX for smaller setups. The integrated power and data cabling allows for long daisy-chains with many fixtures per cable-run, while the power supply can be located backstage (up to 50 m away) for a clean setup avoiding messy cabling and several driver boxes.

Extensive range of field-exchangeable optical accessories for a wide variety of looks

Easy setup, mapping and configuration

Bright and fully calibrated for optimal consistency

### GALLERY



### FEATURES

- 20 mm pixel pitch
- 125 cd per meter calibrated
- 375 lumen per meter calibrated
- High-quality 16-bit per color image processing technology
- Pixel-level brightness and color calibration for optimal image quality
- P3/DMX controllable (automatic protocol detection)
- Intuitive mapping and addressing via P3 System Controller
- Combined power/data input (single cable for power and data input)
- Supported by integrated power and data processor (P3 PowerPort 1500 or P3 PowerPort 1000 IP) and simple cabling system
- Available in lengths of 1000 mm and 320 mm

# VDO SCEPTRON™ 40

Linear Outdoor-rated LED video fixture



## VDO Sceptron 40

The VDO Sceptron 40 is a linear outdoor-rated LED video fixture for the rental market with 40 mm pixel pitch and an extensive range of optical accessories for a wide variety of looks. The VDO Sceptron 40 is driven by the Martin P3 System Controller family for easy configuration, mapping and setup, and is also backwards compatible with DMX for smaller setups. The integrated power and data cabling allows for long daisy-chains with many fixtures per cable-run, while the power supply can be located backstage (up to 50 m away) for a clean setup avoiding messy cabling and several driver boxes.

### GALLERY



Extensive range of field-exchangeable optical accessories for a wide variety of looks

Easy setup, mapping and configuration

Bright and fully calibrated for optimal consistency

### FEATURES

- 40 mm pixel pitch
- 62 cd per meter calibrated
- 187 lumen per meter calibrated
- High-quality 16-bit per color image processing technology
- Pixel-level brightness and color calibration for optimal image quality
- P3/DMX controllable (automatic protocol detection)
- Intuitive mapping and addressing via P3 System Controller
- Combined power/data input (single cable for power and data input)
- Supported by integrated power and data processor (P3 PowerPort 1500 or P3 PowerPort 1000 IP) and simple cabling system
- Available in lengths of 1000 mm and 320 mm

# VC-Dot 1

FULLY WEATHERIZED FLEXIBLE DIRECT-VIEW LED DOTS

---



## HIGHLIGHTS

- Creative LED Video element for building and stage integration
- Customizable pixel-pitch
- Bright and fully calibrated for optimal consistency

## OVERVIEW

VC-Dot 1 is a lightweight string of individually controllable, bright Dots useful in creating customized LED video solutions with maximum artistic flexibility and a minimum of effort. Fully customizable and controllable via the award-winning P3 System Controller™ family and/or DMX512, it is a perfect solution for integrating LED video technology into façades, stage designs, ceilings or any other structure, indoors or outside.

Mapping video onto VC-Dots goes quickly and intuitively via the P3 System Controller. No need for complex setups and time-consuming addressing. VC-Dot 1 contains one LED and is available in an RGB color mixing version.

## KEY MESSAGES

### FAMILY OF ULTIMATE CREATIVE POSSIBILITIES

The VC-Dot family consist of three different sizes, which meets the needs of the project. White and smoked diffused domes are available for further creative looks.

### EASY INFRASTRUCTURE

The VC-Dot products can be controlled via the Martin P3 protocol for easy mapping and integration with other Martin LED Video products onto the same control system.

For small or pure lighting applications, the VC-Dot also accepts RDM/DMX, enabling even more versatile use.

### FLEXIBLE INSTALLATION

The flexible string solution is fully customizable in terms of pixel pitch, number of VC-Dots, total length of string and lead-in cable. This allows for many creative designs in building or stage elements.

### CALIBRATED COLOR AND INTENSITY

Each VC-Dot is calibrated for color and intensity consistency across the entire Martin creative LED range.



# VC-Dot 4

FULLY WEATHERIZED FLEXIBLE DIRECT-VIEW LED DOTS

---



## HIGHLIGHTS

- Creative LED Video element for building and stage integration
- Customizable pixel-pitch
- Bright and fully calibrated for optimal consistency

## OVERVIEW

VC-Dot 4 is a lightweight string of individually controllable, bright Dots useful in creating customized LED video solutions with maximum artistic flexibility and a minimum of effort. Fully customizable and controllable via the award-winning P3 System Controller™ family and/or DMX512, it is a perfect solution for integrating LED video technology into façades, stage designs, ceilings or any other structure, indoors or outside.

Mapping video onto VC-Dots goes quickly and intuitively via the P3 System Controller. No need for complex setups and time-consuming addressing. VC-Dot 4 contains four LEDs and is available in an RGB color mixing version.

## KEY MESSAGES

### FAMILY OF ULTIMATE CREATIVE POSSIBILITIES

The VC-Dot family consist of three different sizes, which meets the needs of the project. White and smoked diffused domes are available for further creative looks.

### EASY INFRASTRUCTURE

The VC-Dot products can be controlled via the Martin P3 protocol for easy mapping and integration with other Martin LED Video products onto the same control system.

For small or pure lighting applications, the VC-Dot also accepts RDM/DMX, enabling even more versatile use.

### FLEXIBLE INSTALLATION

The flexible string solution is fully customizable in terms of pixel pitch, number of VC-Dots, total length of string and lead-in cable. This allows for many creative designs in building or stage elements.

### CALIBRATED COLOR AND INTENSITY

Each VC-Dot is calibrated for color and intensity consistency across the entire Martin creative LED range.

# VC-Dot 9

FULLY WEATHERIZED FLEXIBLE DIRECT-VIEW LED DOTS

---



## HIGHLIGHTS

- Creative LED Video element for building and stage integration
- Customizable pixel-pitch
- Bright and fully calibrated for optimal consistency

## OVERVIEW

VC-Dot 9 is a lightweight string of individually controllable, bright Dots useful in creating customized LED video solutions with maximum artistic flexibility and a minimum of effort. Fully customizable and controllable via the award-winning P3 System Controller™ family and/or DMX512, it is a perfect solution for integrating LED video technology into façades, stage designs, ceilings or any other structure, indoors or outside.

Mapping video onto VC-Dots goes quickly and intuitively via the P3 System Controller. No need for complex setups and time-consuming addressing. VC-Dot 9 contains nine LEDs and is available in an RGB color mixing version.

## KEY MESSAGES

### FAMILY OF ULTIMATE CREATIVE POSSIBILITIES

The VC-Dot family consist of three different sizes, which meets the needs of the project. White and smoked diffused domes are available for further creative looks.

### EASY INFRASTRUCTURE

The VC-Dot products can be controlled via the Martin P3 protocol for easy mapping and integration with other Martin LED Video products onto the same control system.

For small or pure lighting applications, the VC-Dot also accepts RDM/DMX, enabling even more versatile use.

### FLEXIBLE INSTALLATION

The flexible string solution is fully customizable in terms of pixel pitch, number of VC-Dots, total length of string and lead-in cable. This allows for many creative designs in building or stage elements.

### CALIBRATED COLOR AND INTENSITY

Each VC-Dot is calibrated for color and intensity consistency across the entire Martin creative LED range.

# VC-Feeder

## MULTI PROTOCOL DRIVER BOX FOR VC-DOT SERIES



### OVERVIEW

The VC-Feeder is a smart, multi-protocol driver box for the VC-Dot series. A compact design and IP65 rating make it perfectly suited for installation close to a string of VC-Dots. The VC-Feeder provides the string with clean, regulated power, even if the power supply is located far away. Compatibility with the P3 System Controller™ (via the P3 PowerPort 1500™ or PowerPort 1000 IP™) gives it high-quality image processing capabilities with extremely easy setup and configuration. For DMX operation, the VC-Feeder is also compatible with the Martin IP66 PSU 240W, Martin DMX PowerPort 375 or third-party 48V Power Supplies.

### FEATURES

- High-quality, 16-bit-per-color image processing technology
- IP65 rated for permanent outdoor or indoor use
- P3/DMX controllable (automatic protocol detection)
- Intuitive mapping and addressing via P3 System Controller family
- Hybrid power + data input (single cable for power and data input)
- Hybrid power + data thru (to daisy-chain multiple VC-Feeders)
- Hybrid power + data output (to a string of VC-Dots)
- Surface- and truss-mountable

### ORDERING INFORMATION

- VC-Feeder with BBD Connectors..... P/N 90357041

#### RELATED ITEMS

- VC-Dot 1 RGB 100mm pitch, 100 pcs., 2 m lead-in..... P/N 90357060
- VC-Dot 4 RGB 200mm pitch, 64 pcs., 2 m lead-in..... P/N 90357100
- VC-Dot 9 RGB 400mm pitch, 36 pcs., 2 m lead-in..... P/N 90357140
- P3 PowerPort 1500 ..... P/N 90721040
- P3 PowerPort 1000 IP Rental ..... P/N 90721070
- P3 PowerPort 1000 IP Installation ..... P/N 90721080
- Martin DMX PowerPort 375 ..... P/N 90721094
- Martin® IP66 PSU 240W..... P/N 90760330
- P3-050 System Controller ..... P/N 90721090
- P3-150 System Controller ..... P/N 90721015
- P3-300 System Controller ..... P/N 90721060

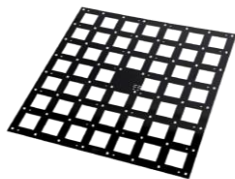
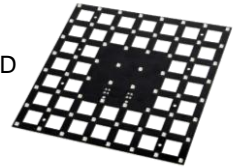
# VC-Grid family

CREATIVE LED VIDEO TILE



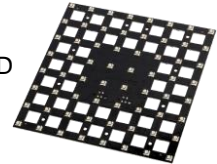
VC-Grid 15 is a small, 240 x 240 mm RGB LED video module with a 15 mm pixel pitch

The VC-Grid 30 is a small, 240 x 240 mm RGB LED video module with a 30 mm pixel pitch



The VC-Grid 60 is an ultra-light-weight RGB LED video module with a 60 mm pixel pitch

The VC-Grid is a small, 200 x 200 mm RGB LED video module with a 25 mm pixel pitch



## HIGHLIGHTS

- Wide range of pixel pitches to suit every application
- Easy cabling, mapping and configuration
- Bright and fully calibrated for optimal consistency

## OVERVIEW

Useful in creating customized LED video solutions with maximum artistic flexibility and a minimum of effort, the VC-Grid's compact size makes it extremely suitable for integration into stage designs, set elements, creative ceilings, lobbies and much more. Used with or without a front diffuser, multiple VC-Grids can be combined in a countless variety of ways for ultimate design freedom. A combined power/data cable allows VC-Grids to be daisy-chained for easy setup and less cabling.

## KEY MESSAGES

### FLEXIBLE MOUNTING

The VC-Grid are lightweight and compact RGB LED modules, which can be arranged in many creative shapes combined with VC-Strip as well. The VC-Grid can be fastened to a surface or structure using pillar bolts or by using dedicated mounting frames for simplified and uniform installation. The VC-Grid comes in four different pixel pitch variants to cover a wide range of applications. Used with or without a front diffuser, multiple VC-Grids can be combined in a countless variety of ways for ultimate design freedom.

### EASY INFRASTRUCTURE

The VC-Grid are daisy-chained with a hybrid power and data cable for easy installation. The VC-Grid can be controlled via the Martin P3 protocol for easy mapping and integration with other Martin LED Video products onto the same control system. For small or pure lighting applications, the VC-Grid also accepts RDM/DMX, enabling even more versatile use.

### OPTIMAL PERFORMANCE

All VC-Grids feature advanced color & brightness calibration & color-matching even between different fixture types. The entire system is fully synchronized, ensuring all elements work cohesively without visible latency. The fixtures can be specified for noise sensitive applications as they are completely silent and the power supply can be mounted away from the fixtures.

# VC-Strip family

CREATIVE LED VIDEO STRIP

---



## HIGHLIGHTS

- Wide range of pixel pitches to suit every application
- Easy cabling, mapping and configuration
- Bright and fully calibrated for optimal consistency

## OVERVIEW

The VC-Strip family of narrow RGB LED video strips is ideal for integration of video into stage and set designs, interiors, custom set elements and more. VC-Strips are fully pixel-level calibrated on brightness and colors for optimal uniformity and quality and are driven by Martin's award-winning P3 System Controller family for smooth playback that outperforms any DMX-based system. VC-Strips are available in various lengths and can even be cut to required length on-site.

Available with 15mm Pixel Pitch, 25mm Pixel Pitch, 30mm Pixel Pitch and 60mm Pixel Pitch

## KEY MESSAGES

### FLEXIBLE MOUNTING

The VC-Strip are lightweight and compact RGB LED strips, which can be arranged in many creative shapes combined with VC-Grid as well. The VC-Strip comes in four different pixel pitch variants to cover a wide range of applications. Used with or without a front diffuser, multiple VC-Strips can be combined in a countless variety of ways for ultimate design freedom.

### EASY INFRASTRUCTURE

The VC-Strips are daisy-chained with a hybrid power and data cable for easy installation. The VC-Strip can be controlled via the Martin P3 protocol for easy mapping and integration with other Martin LED Video products onto the same control system. For small or pure lighting applications, the VC-Strip also accepts RDM/DMX, enabling even more versatile use.

### OPTIMAL PERFORMANCE

All VC-Strips feature advanced color & brightness calibration & color-matching even between different fixture types. The entire system is fully synchronized, ensuring all elements work cohesively without visible latency. The fixtures can be specified for noise sensitive applications as they are completely silent and the power supply can be mounted away from the fixtures.

# EXTERIOR PROJECTION 500

FULLY WEATHERIZED OUTDOOR LED LIGHTING FIXTURE

---



## HIGHLIGHTS

- Flat-field, high-contrast image projection
- Fully weatherized for trouble-free use with minimal maintenance in outdoor installations
- Packed with features, allowing huge creativity in setting up exciting lighting effects

## OVERVIEW

The Exterior™ Projection 500 is a powerful fixture for integrating textures, patterns and graphics in outdoor lighting designs. The fixture can be used for bright and dynamic logo projection as well as precision framing. Using advanced LED technology, it offers outstanding energy efficiency, compact size and unlimited creative possibilities.

## KEY MESSAGES

### FOUR BEAM ANGLES

From 12° to 51°, select the right beam angle for the specific installation allowing for best possible image projection.

### MULTIPLE EFFECTS LAYERS

Allows a range of lighting effects creativity many different looks can be achieved with the same fixture.

### GOBO ACCESSIBILITY

The accessible service lid decreases cost, time, and risk to change gobos and colors.

### FULLY CONVECTION-COOLED IP66 HOUSING

Ideal for minimal maintenance, low total cost of ownership, and resiliency to weather and other environmental conditions.

# EXTERIOR PROJECTION 1000

POWERFUL, FULLY WEATHERIZED OUTDOOR LIGHTING FIXTURE

---



## HIGHLIGHTS

- Full CMY color mixing for maximum creativity
- Fully weatherized for trouble-free use with minimal maintenance in outdoor installations
- Flat-field, high-contrast image projection

## OVERVIEW

The Martin Exterior™ Projection 1000 is an unparalleled, powerful tool for permanent outdoor installations to integrate textures, patterns and graphics for limitless creative exterior lighting designs. Sporting high impact and low maintenance, this advanced, IP66-rated LED projector offers sharp image quality, dynamic features and great reach over huge distances.

## KEY MESSAGES

### HIGH PRECISION OPTICAL SYSTEM

The wide zoom range from 10° - 44° allows for exact projection on desired surface.

### CREATIVE TOOLBOX

Includes four effect layers - gobos, prisms, animation, variable frost, and a full CMY color mixing system, an additional color wheel as well as zoom and focus offer unlimited creativity.

### LOW TOTAL COST OF OWNERSHIP

20,000 hours' lamp life equals 8 hours' daily use for 7 years. And even then, it will still produce 70% of its original output, which makes it highly superior to any traditional discharge image projector.

### BUILT TO LAST

Operates at temperatures from -30°C to 45°C and its robust, vandalism-proof IK08 and IP66-rated aluminum housing is surface-treated to comply with the ISO12944/C5-M corrosion protection standard.

# EXTERIOR DOT-HP

FULLY WEATHERIZED DIRECT-VIEW HIGH INTENSITY LED DOT

---



## HIGHLIGHTS

- Creative LED Video element for building and stage integration
- Customizable pixel-pitch
- Bright and fully calibrated for optimal consistency

## OVERVIEW

Exterior Dot-HP is a bright, outdoor-rated dot designed to create media facades or perimeter lighting on large buildings and structures for long-distance viewing. This high-performance exterior LED dot for large venues allows for long fixture runs with variable pixel pitches for flexible designs. A creative tool for lighting designers, the Exterior Dot-HP is available in two versions – RGB color mixing or cool white – with a number of front designs for a variety of unique looks. It is driven by the Martin P3 System Controller family for easy setup and video display. The Exterior Dot-HP is also compatible with RDM/DMX for smaller setups.

## KEY MESSAGES

### VARIETY OF MODELS FOR DIFFERENT LOOKS AND APPLICATIONS

The Exterior Dot-HP is available with two different LED configurations, full RGB color control or as a cool white version. There are two different fronts available for direct-view applications, the flat clear front or a dome diffuser. Further the Exterior Dot-HP is available with a lens array for directional lighting applications.

### FLEXIBLE MOUNTING OPTIONS

The Exterior Dot-HP is an independent dot, which can be connected in high quantities over long distances for large scale projects. The dot can be directly mounted onto a surface and two different mounting brackets are available for further installation options.

### EASY INFRASTRUCTURE

The Exterior Dot-HP can be controlled via the Martin P3 protocol for easy mapping and integration with other Martin LED Video products onto the same control system. For small or pure lighting applications, the Exterior Dot-HP also accepts RDM/DMX, enabling even more versatile use.



# EXTERIOR INGROUND 400 series

FULLY INGROUND SERIES LED LUMINARIES



## Exterior Inground 400 Series

The Exterior™ Inground 400 series is a range of uncomplicated, easy-to-use color-changing LED luminaires. Perfect for installations with visible light sources, the Exterior Inground series combines the benefits of dynamic light and discreet installation. The recessed housing can be made to fit any type of surface with a trim ring available in beveled and flush-mount versions, for discreet installation both day and night.

The series is available in various configurations. The Exterior Inground 400™ has a narrow beam. The Exterior Inground 410™ blends the output of its RGBW LED sources in its lenses, delivering perfectly pre-mixed colors. And the Exterior Inground 420™ gives variable color temperature white light from 2700 to 6500 K.

### GALLERY



Bright, efficient in-ground fixture with full LED color mixing

Advanced optical performance with uniform distribution of light and color

Durable, low-maintenance construction

### FEATURES

- Choice of premixed RGBW, single-color RGBW or variable CT white LEDs
- Built-in glare shield for high visual comfort
- Flush-mount and beveled trim ring options for installation in any groundwork
- Choice of five beam angle options
- Remote control and configuration via DMX and RDM
- Rugged drive-over IP67 housing

# EXTERIOR LINEAR™ RGBW

300 RGBW GRAZE / 300 RGBW COVE / 1200 RGBW GRAZE / 1200 RGBW COVE

---



## HIGHLIGHTS

- Linear RGBW LED fixture with high output color mixing
- Robust outdoor-rated fixture available in two lengths
- Easy installation with integrated power supply

## OVERVIEW

The Exterior™ Linear RGBW is a series of high output LED color-changing fixtures in a robust outdoor-rated housing. Available in cove and graze light versions in different sizes for perfect fitting, the series is designed to illuminate walls and any other type of linear structure and features uniform light distribution. The graze version is available at four different beam angles, ideal for highlighting textured surfaces. The Cove version features a uniform light distribution at a beam angle of 120°, suitable for a wide range of indirect lighting applications such as cove lighting in ceilings, decorative wall lighting and other structures. An integrated universal power supply makes installation a breeze and the DMX controllable fixture is easy to daisy chain using a combined power and data connector.

## KEY MESSAGES

### NARROW BEAM CONTROL

Dynamic color mixing using discreet Red, Green, Blue and neutral White Cree XP-E2 LEDs. The Exterior Linear RGBW Graze offers the most narrow beam angle configuration and optimum brightness for large-scale graze lighting applications.

### WEATHERIZED, STURDY DESIGN

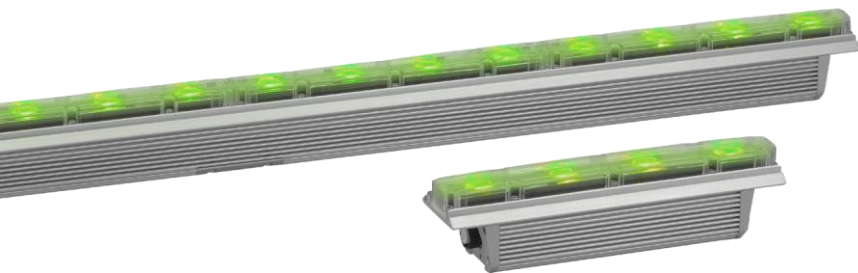
The Exterior Linear RGBW is designed for permanent outdoor installation. IP 66-rated, it is efficiently protected against intrusion of dust and water, while its IK08-classification ensures great protection against external mechanical impacts.

### SIMPLE INFRASTRUCTURE

The Exterior Linear RGBW features a built-in power supply which auto-ranges 100-277 V, allowing for long fixture runs of up to 25 x 4 ft fixtures (100 ft at 230 V). The IP-rated hybrid connector ensures hassle-free, fast installation with no extra control boxes required.

# EXTERIORLINEAR™ QUAD

310 QUAD GRAZE / 310 QUAD COVE / 1210 QUAD GRAZE / 1210 QUAD COVE



## HIGHLIGHTS

- Linear LED fixture with QUAD color uniform color mixing
- Robust outdoor-rated fixture available in two lengths
- Easy installation with integrated power supply

## OVERVIEW

The Exterior™ Linear QUAD is a series of high output LED pre-mixed color-changing fixtures in a robust outdoor-rated housing. Available in cove and graze light versions in different sizes for perfect fitting, the series is designed to illuminate walls and any other type of linear structure, and features superbly premixed colors and uniform light distribution at three different beam angles, ideal for highlighting textured surfaces.

Producing superior color mixing directly at the lens, the QUAD-color LEDs efficiently prevent multi-colored shadows, and improve the looks and aesthetics of the fixture in direct view installations. An integrated universal power supply makes installation a breeze and the DMX controllable fixture is easy to daisy chain using a combined power and data connector.

## KEY MESSAGES

### QUAD COLOR MIXING

The Exterior Linear QUAD features powerful QUAD color LEDs, which, combined with a large diameter lens, provide great color mixing within the lens while still maintaining a narrow beam, which is important for graze lighting applications.

A high-durability and ISO 12944-6 certified C5 M-classified marine surface coating allows for installation in extremely corrosive coastal environments, and its automatic thermal management system offers full protection of LEDs and components at excessive temperatures.

### WEATHERIZED, STURDY DESIGN

The Exterior Linear QUAD is designed for permanent outdoor installation. IP 66-rated, it is efficiently protected against intrusion of dust and water, while its IK08-classification ensures great protection against external mechanical impacts.

### SIMPLE INFRASTRUCTURE

The Exterior Linear QUAD features a built-in power supply which auto-ranges 100-277 V, allowing for long fixture runs of up to 25 x 4 ft fixtures (100 ft at 230 V). The IP-rated hybrid connector ensures hassle-free, fast installation with no extra control boxes required.

# EXTERIOR LINEAR™ CTC

320 CTC GRAZE / 320 CTC COVE / 1220 CTC GRAZE / 1220 CTC COVE

---



## HIGHLIGHTS

- Linear color temperature controlled LED fixture with high output color mixing
- Robust outdoor-rated fixture available in two lengths
- Easy installation with integrated power supply

## OVERVIEW

The Exterior™ Linear CTC is a series of high output LED color temperature controlled (2700K – 6500K) fixtures in a robust outdoor-rated housing. Available in cove and graze light versions in different sizes for perfect fitting, the series is designed to illuminate walls and any other type of linear structure and features uniform light distribution. The graze version is available at four different beam angles, ideal for highlighting textured surfaces. The Cove version features a uniform light distribution at a beam angle of 105°, suitable for a wide range of indirect lighting applications such as cove lighting in ceilings, decorative wall lighting and other structures. An integrated universal power supply makes installation a breeze and the DMX controllable fixture is easy to daisy chain using a combined power and data connector.

## KEY MESSAGES

### NARROW BEAM CONTROL

Color temperature control based on Warm, neutral and cool White Cree XP-E2 LEDs. The Exterior Linear CTC Graze offers a narrow beam angle configuration and optimum brightness for large-scale graze lighting applications.

### WEATHERIZED, STURDY DESIGN

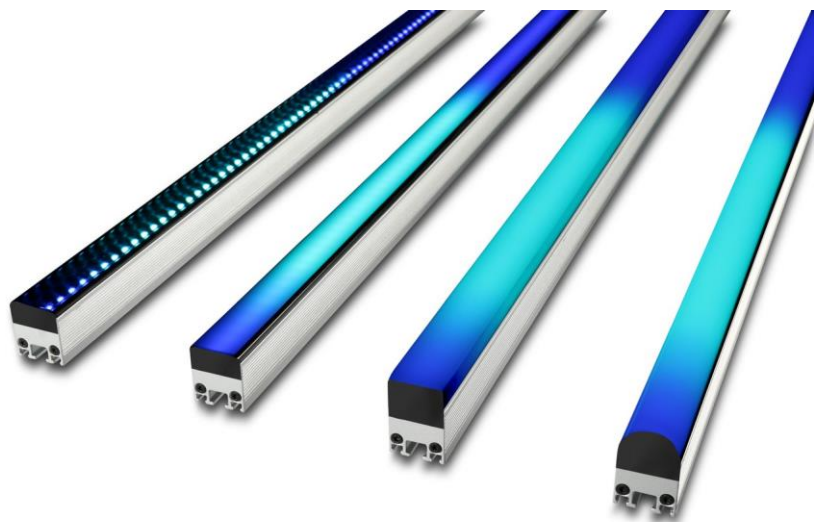
The Exterior Linear CTC is designed for permanent outdoor installation. IP 66-rated, it is efficiently protected against intrusion of dust and water, while its IK08-classification ensures great protection against external mechanical impacts.

### SIMPLE INFRASTRUCTURE

The Exterior Linear CTC features a built-in power supply which auto-ranges 100-277 V, allowing for long fixture runs of up to 25 x 4 ft fixtures (100 ft at 230 V). The IP-rated hybrid connector ensures hassle-free, fast installation with no extra control boxes required.

# EXTERIOR PIXLINE™ 10-20-40

OUTDOOR RATED LINEAR LED VIDEO FIXTURE



## HIGHLIGHTS

- Wide variety of pixel pitch, lens and diffusers options for flexibility of look
- Fully outdoor-rated and customizable in terms of length and color
- Easy setup and cabling for clean installation

## OVERVIEW

The Exterior PixLine 10 is a linear LED video fixture for media facades and creative installations. The Exterior PixLine 10 is available with a wide variety of lenses and diffusers for the right look for every application. The Exterior PixLine 10 is driven by the Martin P3 System Controller family for easy setup and video display, and it is also backwards compatible with DMX. The fixtures can be fully customized in terms of length and color to match every installation requirement, while the power source is hidden.

## KEY MESSAGES

### VARIETY OF DIFFUSERS FOR DIFFERENT LOOKS

All Exterior PixLines are available with 4 different diffusers allowing for selecting the right look for the right application: Flat clear front, Flat diffused front, Square diffused front and Round diffused front.

### FAMILY OF ULTIMATE CREATIVE POSSIBILITIES

The Exterior PixLine family consists of linear LED Video sticks with 10, 20 and 40 mm pixel pitch for easy design of any application. The Exterior PixLine comes in custom length (from 300 mm to 2000 mm) and custom color.

### DEDICATED GRAZE VERSION

A dedicated graze version has been designed to achieve an effective graze light and wall wash distribution. The lens provides a beam angle of 25° X 85° with the light tilted 5° towards the wall.

### EASY INFRASTRUCTURE

The Exterior PixLine products can be controlled via the Martin P3 protocol for easy mapping and integration with other Martin LED Video products onto the same control system.

For small or pure lighting applications, the Exterior PixLine also accepts RDM/DMX, enabling even more versatile use.

# EXTERIOR WASH 100-200-300

FULLY WEATHERIZED DYNAMIC COLOR CHANGING WASH LIGHT



## HIGHLIGHTS

- Narrow beam configuration with 6 beam angle options
- Functional and discreet optional snoot which integrates with the design of the fixtures
- Control via DMX, RDM and OLED display

## OVERVIEW

Exterior™ Wash 100-200-300 are powerful, compact and energy-efficient LED lighting fixture designed to illuminate structures, features of a building, building facades and bridges. A discreet, optional snoot integrates seamlessly with the slick design of the fixtures. It has built-in display for ease-of-use, a wide selection of beam angles and is fully IP-rated for permanent outdoor use.

Exterior Wash 100-200-300 are designed for narrow beam applications and is based on separate LEDs for red, green, blue and white.

Exterior Wash 100 is designed to illuminate smaller structures, features of a building and landscaping.

Exterior Wash 200 is designed to illuminate mid-sized structures and building facades

Exterior Wash 300 is designed to illuminate large structures, building facades and bridges

## KEY MESSAGES

### BUILT TO LAST

Ideal for minimal maintenance, low total cost of ownership, and resiliency to weather and other environmental conditions. Operates at temperatures from -30°C to 45°C and its robust, vandalism-proof IK08 and fully convection cooled IP66-rated aluminum housing is surface-treated to comply with the ISO12944/C5-M corrosion marine protection standard.

### EASY TO INSTALL

The Exterior Wash comes pre-installed with power and data cable has integrated multirange 100-277V power supply, so no external control boxes are required.

### FLEXIBLE BEAM CONTROL

The individual red, green, blue, white LEDs allows for a native narrow beam angle configuration of 7.5° ideal for longer throw or accent lighting applications. Optional beam angle is installed via externally mounted holographic prismatic diffuser lens, ensuring precise beam control and very high transmission rate.

### EASY TO CONTROL

The Exterior Wash features RDM and DMX control for great integration in control systems. The built-in OLED display allows for easy configuration and on-board stand-alone programming with up to 20 scenes.

# EXTERIOR WASH 110-210-310

FULLY WEATHERIZED DYNAMIC COLOR CHANGING WASH LIGHT



## HIGHLIGHTS

- Uniform color mixing with 6 beam angle options
- Functional and discreet optional snoot which integrates with the design of the fixtures
- Control via DMX, RDM and OLED display

## OVERVIEW

Exterior™ Wash 110-210-310 is a powerful, compact and energy-efficient LED lighting fixture designed to illuminate structures, features of a building, building facades and bridges. A discreet, optional snoot integrates seamlessly with the slick design of the fixtures. It has built-in display for ease-of-use, a wide selection of beam angles and is fully IP-rated for permanent outdoor use.

The Exterior Wash 110-210-310 are designed for superior color mixing applications and is based on quad-color premixed LEDs.

Exterior Wash 110 is designed to illuminate smaller structures, features of a building and landscaping.

Exterior Wash 210 is designed to illuminate mid-sized structures and building facades

Exterior Wash 310 is designed to illuminate large structures, building facades and bridges

## KEY MESSAGES

### BUILT TO LAST

Ideal for minimal maintenance, low total cost of ownership, and resiliency to weather and other environmental conditions. Operates at temperatures from -30°C to 45°C and its robust, vandalism-proof IK08 and fully convection cooled IP66-rated aluminum housing is surface-treated to comply with the ISO12944/C5-M corrosion marine protection standard.

### EASY TO INSTALL

The Exterior Wash comes pre-installed with power and data cable has integrated multirange 100-277V power supply, so no external control boxes are required.

### FLEXIBLE BEAM CONTROL

The QUAD color LEDs allows for uniform color mixing direct from the lens with no color shadows and superior color mixing. Optional beam angle is installed via externally mounted holographic prismatic diffuser lens, ensuring precise beam control and very high transmission rate.

### EASY TO CONTROL

The Exterior Wash features RDM and DMX control for great integration in control systems. The built-in OLED display allows for easy configuration and on-board stand-alone programming with up to 20 scenes.

# EXTERIOR WASH 120-220-320

FULLY WEATHERIZED DYNAMIC COLOR TEMPERATURE WASH LIGHT



## HIGHLIGHTS

- Variable color temperature control with 6 beam angle options
- Functional and discreet optional snoot which integrates with the design of the fixtures
- Control via DMX, RDM and OLED display

## OVERVIEW

Exterior™ Wash 120-220-320 is a powerful, compact and energy-efficient LED lighting fixture designed to illuminate structures, features of a building, building facades and bridges. A discreet, optional snoot integrates seamlessly with the slick design of the fixtures. It has built-in display for ease-of-use, a wide selection of beam angles and is fully IP-rated for permanent outdoor use.

The Exterior Wash 120-220-320 are designed for variable color temperature (2700K-6500K) applications and is based on separate 2700K and 6500K LEDs

Exterior Wash 120 is designed to illuminate smaller structures, features of a building and landscaping.

Exterior Wash 220 is designed to illuminate mid-sized structures and building facades

Exterior Wash 320 is designed to illuminate large structures, building facades and bridges

## KEY MESSAGES

### BUILT TO LAST

Ideal for minimal maintenance, low total cost of ownership, and resiliency to weather and other environmental conditions. Operates at temperatures from -30°C to 45°C and its robust, vandalism-proof IK08 and fully convection cooled IP66-rated aluminum housing is surface-treated to comply with the ISO12944/C5-M corrosion marine protection standard.

### EASY TO INSTALL

The Exterior Wash comes pre-installed with power and data cable has integrated multirange 100-277V power supply, so no external control boxes are required.

### FLEXIBLE BEAM CONTROL

The warm and cool color LEDs allows for precise color temperature control from 2700 K to 6500 K. Optional beam angle is installed via externally mounted holographic prismatic diffuser lens, ensuring precise beam control and very high transmission rate.

### EASY TO CONTROL

The Exterior Wash features RDM and DMX control for great integration in control systems. The built-in OLED display allows for easy configuration and on-board stand-alone programming with up to 20 scenes.



# RUSHBATTEN 1 HEX

12 CELL COLOR BATTEN WASH

---

## Ultra-Bright Batten Features Full Pixel Control and Is Perfect for Live Shows, TV, Stages, and Concerts

Featuring 12 watt RGBAW+UV 6-in-1 LEDs, the RUSH BATTEN 1 HEX provides intense light for color, white, or blacklight applications. With available pixel mapping of the individual LEDs and controllable electronic dimming, strobe, and pulse effects, designers can achieve a variety of exciting looks. A removable diffuser/lens increases the beam angle from 25° to 32°, and brackets are available for floor or truss mounting. The LED source and rugged, lightweight construction make it ideal for live shows, TV events, stage, concerts, and nightclubs.

### 12 individually-controllable RGBAW+UV LEDs

This 12-cell batten provides intense light for color, white, or blacklight applications.

### Pixel Mapping and Electronic Controllable Effects

With available pixel mapping of the individual LEDs and controllable electronic dimming, strobe, and pulse effects, designers can achieve a variety of exciting looks.

### 25° and 32° beam angles available

A removable diffuser/lens increases the beam angle from 25° to 32°, and brackets are available for floor or truss mounting.



# RUSH BLINDER 1 WW

2x2 100W LED WARM WHITE BLINDER

---

## Ultra-Bright Quad LED Blinder Provides High Intensity Light for a Variety of Entertainment Applications

This quad LED blinder features a PAR array with four individually-controllable 100 watt COB warm white LEDs, providing high-intensity light for a variety of entertainment events. The unique frame on the RUSH BLINDER 1 WW offers the ability to attach multiple fixtures together in a grid pattern. With individually-controllable COBs, multiple units can be used to create pixel effects across a grid of fixtures, with onboard electronic dimming and strobe also available. The fixture offers a wide 70° beam angle, with a combined 19,000+ lumens output from the fixture for truly brilliant effects. The rugged, lightweight construction and available brackets for floor or truss mounting make the RUSH BLINDER 1 WW ideal for live shows, TV events, stage, concerts, and nightclubs.

## 2x2 100W LED blinder with individually-controllable LEDs

The blinder's PAR array includes four individually-controllable 100 watt COB warm white LEDs, providing high-intensity light for a variety of entertainment events.

## Multiple Fixture Mounting

The Blinder 1 WW's unique frame offers the ability to attach multiple fixtures together in a grid pattern. With individually-controllable COBs, multiple units can be used to create pixel effects across a grid of fixtures, with onboard electronic dimming and strobe also available.

## Wide 70° beam angle for broad coverage

The fixture offers a wide 70° beam angle, with a combined 19,000+ lumens output from the fixture for truly brilliant effects.



# RUSH CS series

COVE LIGHTING SYSTEM



GALLERY

## RUSH CS Series

The Martin RUSH CS Series is a color LED cove lighting system designed to illuminate interior walls and other indoor spaces. These high output, cost effective lighting strips are a great fit for indoor lobbies, lounges or other spaces. The fixtures offer both basic and advanced control modes, allowing these venues the ultimate flexibility to establish the exact look they need without adding unneeded complexity to the lighting design, installation or operation. Designed to be easy to install and use, the RUSH CS Series is a perfect fit for a variety of applications.

Available in both wide and graze options in varying lengths, integrators can install up to 10 meters on a single Power Supply Unit (PSU). To power the units, the RUSH CS Series uses a hybrid power and data cable system that reduces wiring and installation costs by using a single cable for both power and data.

The series is available in a variety of sizes. The RUSH CS 300 Graze and 300 Wide are 303mm ( 11.9 in) in length. The RUSH CS 600 Graze and 600 Wide are 603mm ( 23.7 in) in length. The RUSH CS 900 Graze and 900 Wide are 903mm ( 35.6 in) in length. And the RUSH CS 1200 Graze is 1203mm ( 47.4 in) in length.

High-output indoor LED cove lighting fixture

Multiple control modes & pre-programmed CTC presets

Easy installation of up to 10m on a single PSU

### FEATURES

- CREE XP-E2 R/G/B LED
- 18 x 65° beam angle—Graze
- 124° beam angle—Wide
- Electronic dimming
- CTC preset control channel
- Easy mounting bracket system
- Hybrid power & data in/out
- DMX and RDM control



# RUSH MH 1 – MH 5 Profile



## RUSH MH 1 Profile Plus

**This super bright LED profile moving head is even brighter than its predecessor RUSH MH 1 Profile with 50% more output. Efficient optics with an increased beam angle from 13 degrees to 16 degrees punches out a variety of effects and colors from two gobo wheels and two color wheels. For added versatility and effect, it also houses an electronic dimmer and strobe, iris and 3-facet prism and an improved cooling system for quieter operation.**

50 % increase in lumen output

16 degree beam angle

Regulated fan control for quiet operation

### FEATURES

- LED profile moving head
- Super bright - efficient optics
- Rotating gobo wheel
- Fixed gobo wheel
- 2 x color wheels
- Electronic dimming and strobe
- Iris and 3-facet prism
- 3 & 5 pin XLR



## RUSH MH 5 Profile

**This compact and bright LED profile moving head with efficient optics punches out a variety of effects and colors. With two color wheels, two gobo wheels and rotating prism the MH 5 Profile offers full effect in a super compact housing, making it perfect for DJs, bands, clubs, bars, cruise ships and installations where small footprint and low weight is critical.**

Compact 75 W LED moving head profile

One rotating and one fixed gobo wheel

Two color wheels

### FEATURES

- Super bright - efficient optics
- Electronic dimming and strobe
- 3-facet prism

# RUSH MH 6 Wash

## RUSH MH 6 Wash CT

The RUSH MH 6 Wash CT is designed for key lighting applications within the House of Worship, Performing Arts and Live Stage environments where color temperature control of white light is critical but also a compact and light weight design is desired for smaller applications

The RUSH MH 6 WASH CT is a bright single-lens LED moving head with fully premixed white color temperatures. With twelve 10W WW/CW (warm white and cold white) LEDs and a 10° to 60° motorized zoom, it offers full electronic dimming and variable strobe effects controlled via DMX.

Pre mixed white light ranging from 2,700K to 7,800K

10-60 Degree Zoom System

Compact and Lightweight Design



### GALLERY



### FEATURES

- Allows key lighting to be matched for multiple sources from Tungsten to Metal Halide
- Can be used as a Mid effect with a tight beam look to washing a stage for key lighting applications
- Ideal for applications that have limited ceiling height or weight restrictions.

## RUSH MH 6 Wash RGBW

The RUSH MH 6 Wash RGBW is designed for key lighting applications within the House of Worship, Performing Arts and Live Stage environments where color temperature control of white light is critical but also a compact and light weight design is desired for smaller applications

The RUSH MH 6 WASH RGBW is a bright single-lens LED moving head with fully premixed RGBW color. With twelve 10W RGBW (RED, GREEN, BLUE, WHITE) LEDs and a 10° to 60° motorized zoom, it offers full electronic dimming and variable strobe effects controlled via DMX.

Pre mixed RGBW light

10-60 Degree Zoom System

Compact and Lightweight Design



### FEATURES

- Allows key lighting to be matched for saturated color
- Can be used as a Mid effect with a tight beam look to washing a stage for key lighting applications
- Ideal for applications that have limited ceiling height or weight restrictions.

# RUSH MH 7 Hybrid

Power Hybrid moving head



## RUSH MH 7 Hybrid

The Martin RUSH MH 7 Hybrid is an all-in-one beam, spot and wash moving head with class-leading optics and a zoom system that allows designers maximum flexibility from the high-energy dance floor to performing arts spaces, all within an affordable price bracket.

The RUSH MH 7 Hybrid's features include sharp, crisp optics with a powerful zoom that ranges from a smooth 45° wash to a punchy 2.2° beam.

The Philips Platinum 11R 250W 7800 K lamp contributes to the RUSH MH 7 Hybrid's impressive output. The fixture features 8 rotating/indexing and 12 static gobos, 10 selectable colors, and exciting beam effects from its 8-facet circular and 4-facet linear prisms.

All-in-one Hybrid: Beam, Spot and Wash

Class-leading optical system

8 Full feature set including 8- and 4-facet prisms

### FEATURES

- 2.2 – 24° zoom in Beam Mode
- 2.5 – 24° zoom in Spot Mode
- 15 – 45° zoom in Wash Mode
- 8 rotating/indexing gobos + 12 static gobos + 10 colors plus CTO, CTB, UV
- 4-facet linear prism + 8-facet circular prism
- Motorized focus

### GALLERY



# RUSH MH 11 Beam

Power BEAM moving head



## RUSH MH 11 Beam

The Martin RUSH MH 11 Beam is a high-intensity beam moving head designed for high end installations and rental applications. The RUSH MH 11 Beam utilizes the same 250W Platinum 11R lamp found in the Martin RUSH MH 7 Hybrid, but with refined beam optics that provide excellent intensity and sharp mid-air effects in a beam-only fixture. It also shares the same color temperature and palette with the RUSH MH 7 and MAC Axiom, for excellent color matching in a cost-effective beam-only fixture.

The high-intensity lamp combined with class-leading optics in the MH 11 allows the fixture to achieve sharp, high-output beam effects with a super-tight 2.6 degree beam angle. The fixture can produce a range of complex and precise mid-air looks utilizing 8 rotating and indexing gobos and an 8-facet prism. The fixture has 13 selectable colors and frost and motorized focus.

The fixture is a perfect fit for high-end live venue installations such as nightlife, houses of worship, and cruise ships. It also features a rugged industrial design for use in touring applications where Martin RUSH MH 7 and MAC Axiom fixtures are used.

Best-in-class optics for longer reach and greater impact

Feature-packed with a wealth of effects

Sturdy design built for the road

### FEATURES

- Powerful 250 W Philips Platinum 11R lamp
- Super tight 2.6° beam angle
- 8 rotating & indexing gobos
- Ultra sharp, narrow long-throw beam +Mid-air effects
- 10 selectable colors
- CTO, CTB, UV
- Frost effect
- 8-facet circular prism
- Motorized focus

### GALLERY



# RUSH MH 10 BEAM FX

## INFINITY RFBW BEAM FX



## RUSH MH 10 Beam FX

The Martin RUSH MH 10 Beam FX is a compact 60W RGBW LED Beam moving head fixture with an independent, built-in LED ring. With 24 individually-controllable RGB LEDs surrounding a central beam lens, the RUSH MH 10 FX offers a variety of exciting visual effect possibilities at an affordable price.

The Martin RUSH MH 10 Beam FX uses a collimator lens design, creating a striking, high-intensity look on stage. The OSRAM OSTAR LEDs on the MH 10 Beam offers excellent color mixing with Martin MAC Aura, RUSH MH 6, and RUSH Par 2 fixtures. Independent control of the ring LEDs also allows the fixture to easily blend into on-stage LED video elements.

Other features include continuous pan and tilt and lightweight build, providing a number of interesting rigging possibilities and high-speed looks. The Martin RUSH MH 10 is a perfect fit for nightlife, houses of worship, cruise ships and small-to-medium touring and rental customers.

Collimator lens for a super-tight 4.5° high intensity beam

LED ring with 24 independently-controllable LEDs

Continuous pan/tilt for unrestricted movement and high-speed looks

### FEATURES

- Bright 60 W Osram RGBW LED engine
- Collimator lens with tight 4.5° beam angle
- Ambient glow ring with 24 individually pixel-controllable RGB LEDs
- Electronic dimming and Strobe
- Temperature-controlled fan cooling
- Unlimited Pan & Tilt rotating
- 3 + 5 pin XLR DMX connection
- Neutrik TRUE 1 in and thru socket
- Compact size—L: 275 x W: 188 x H: 325 mm / L: 10.8 x W: 7.4 x H: 12.8 in
- Low weight—7.5 kg/16.5 lbs.

### GALLERY





# RUSH PAR 2 CT & RGBW

## CT & RGBW PAR ZOOM



## RUSH PAR 2 CT Zoom

The RUSH PAR 2 CT Zoom is a bright single-lens LED PAR Can with fully premixed white color temperatures. With twelve 10W WW/CW (warm white and cold white) LEDs and a 10° to 60° motorized zoom, the RUSH PAR 2 CT Zoom is ideal for multiple applications, ranging from cabaret clubs and theatre through to conferences and exhibitions. It offers full electronic dimming and variable strobe effects and is controlled via DMX or a stand-alone function.

Single-lens bright LED PAR Can

12x10 W WW/CW LEDs

Pre-mixed white light ranging from 2700 to 7800 K

10° to 60° motorized zoom

### GALLERY



## RUSH PAR 2 RGBW Zoom

The RUSH PAR 2 RGBW Zoom is a bright single-lens LED PAR Can with fully premixed color from 12 RGBW LEDs and a spectacular 10 – 60 ° zoom. It offers electronic dimming and strobe and comes with a flexible bracket for floor or truss mounting.

Bright LED PAR Can

12x10 W RGBW LEDs

Single-lens wash with fully premixed color

### FEATURES

- 10° to 60° zoom
- Electronic dimming and strobe
- Temperature-controlled fan cooling
- Flexible bracket – floor or truss-mounted
- 5-pin XLR



### GALLERY



# RUSH PAR 3 RGB

SINGLE LENS WASH WITH PREMIXED COLOR

---

## Bright Yet Quiet Single-Lens Color LED PAR Perfect for Live Shows, Houses of Worship, and Nightlife

With a 36 watt COB RGB LED, the RUSH PAR 3 RGB offers fully premixed color for use in wash and key lighting applications. A magnetically attached beam angle reducer lens allows the RUSH PAR 3 RGB to offer both 80° and 14° beam angle options, and the fanless design provides quiet operation in sound-sensitive environments. The RUSH PAR 3 RGB includes electronic dimming and strobe, a bracket for floor or truss mounting, and a rugged, lightweight construction, making it ideal for live shows, performing arts, house of worship, bars, nightlife, and architectural installations. A version finished in white is also available for décor matching.

### Single-lens 36W LED PAR

The RUSH PAR 3 RGB offers fully premixed color for use in wash and key lighting applications.

### Removable magnetic lens for multiple beam angles

A magnetically attached beam angle reducer lens allows the RUSH PAR 3 RGB to offer both 80° and 14° beam angle options.

### Fanless design for quiet operation

The fanless design provides ultra quiet operation, which is crucial for sound-sensitive environments.



# RUSH PAR 4 UV

100W COB 400nm UV PAR

---

## Bright Single-Lens UV LED Bar Is Ideal for Nightlife, Stage, and Concert Blacklight Applications

This UV LED PAR can light fixture includes a 100 watt COB 400nm UV LED mounted in a reflector for high-output ultraviolet light, and has regulated air cooling for quiet operation. With electronic dimming and strobe and a bracket suitable for floor or truss mounting, the RUSH PAR 4 UV is ideal for a variety of nightlife, stage, and concert applications.

### Single-lens 100W UV LED PAR

The RUSH PAR 4 UV includes a 100 watt COB 400nm UV LED mounted in a reflector for high-output ultraviolet light.

### Regulated aircooling

To ensure ultra-quiet operation, regulated air cooling is integrated.

### Electronic dimming and strobe

With electronic dimming and strobe and a bracket suitable for floor or truss mounting, the RUSH PAR 4 UV is ideal for a variety of nightlife, stage, and concert applications.



# RUSH SCANNER 1 LED



## RUSH Scanner 1 LED

**The RUSH Scanner 1 LED is designed to enable lighting designers to boost the wow factor and energize crowds with high-speed mid-air looks in a variety of entertainment venues and nightclubs.**

**This fixture delivers high output via sharp optics and is packed with eye-catching effects. With its high-speed pan and tilt capabilities, the RUSH Scanner 1 LED is ideal for creating dramatic atmospheres and boosting energy levels on cruise ships, in dance clubs and other nightlife venues.**

**Compact size, low weight, rugged construction and long-life LEDs also make the RUSH Scanner 1 LED a favorite for rental companies seeking to produce once-in-a-lifetime memorable events through powerful, dynamic lighting effects.**

### GALLERY



Powerful 90 W white LED engine

Breathtakingly fast pan and tilt

Rich, dynamic feature set including two color wheels, two gobo wheels and rotating prism

### FEATURES

- High-power, long-life 90 W white LED engine
- Effects include two gobo wheels, two color wheels and a 3-facet prism
- Sharp projections with motorized focus
- DMX control and standalone operation
- Auto trig and music trig standalone modes
- Compact size and rugged construction





[www.martin.com/en](http://www.martin.com/en)

DISTRIBUITO E GARANTITO DA:



**EXHIBO** S.p.A.  
COMMUNICATION SYSTEMS

[www.exhibo.it](http://www.exhibo.it)

EXHIBO S.p.A.  
Via Leonardo da Vinci, 6  
20854 Vedano al Lambro (MB) - Italy  
Tel.: +39 039 4984 1  
Mail: [info@exhibo.it](mailto:info@exhibo.it)